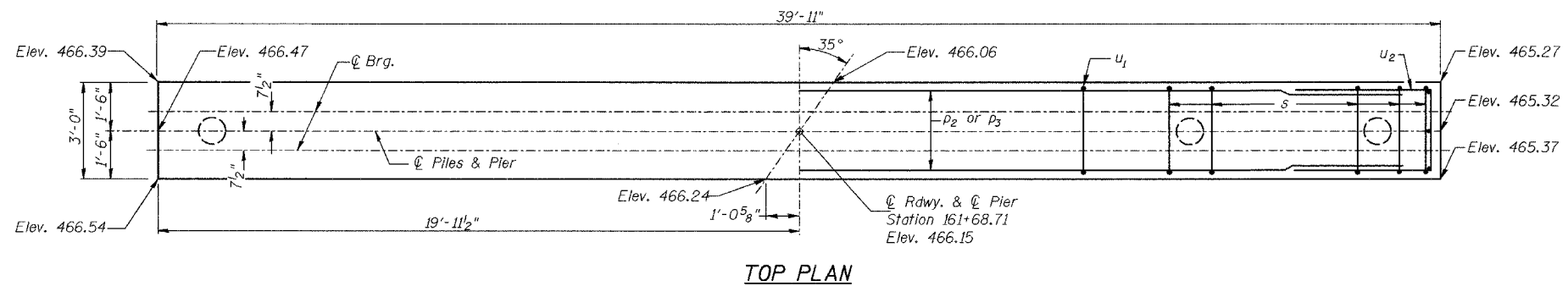


**NOTES:**  
All edges shall have standard  $\frac{3}{4}$ " chamfer.

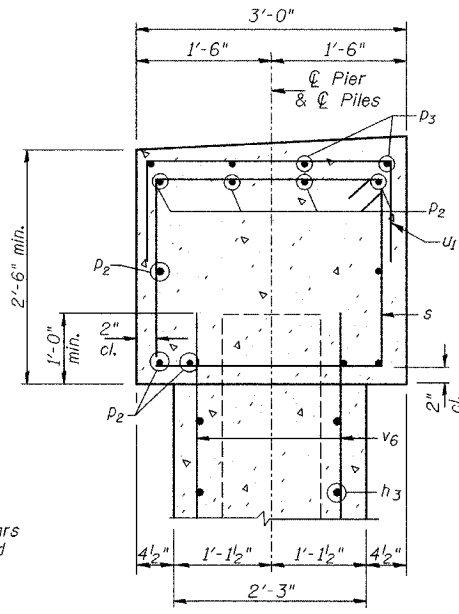
ROUTE NO.	SECTION	COUNTY	TOTAL SHEETS	SHEET NO.
CH 19	*	MORGAN	76	34
FED. ROAD DIST. NO. 7		ILLINOIS	PROJECT RS-BRS-611(106)	

SHEET NO. 13  
14 SHEETS

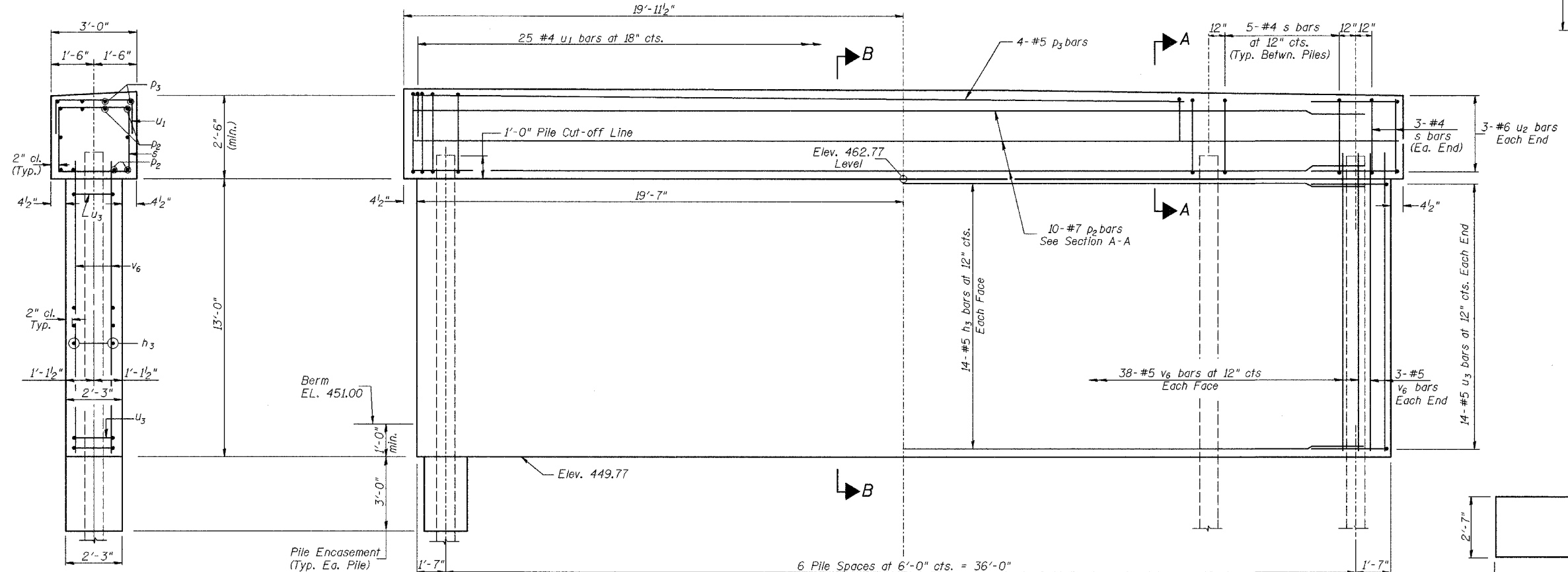
\*02-00088-00-BR  
**93388**



**TOP PLAN**



**SECTION A-A**



**ELEVATION**  
(Looking Upstation)

**SECTION B-B**

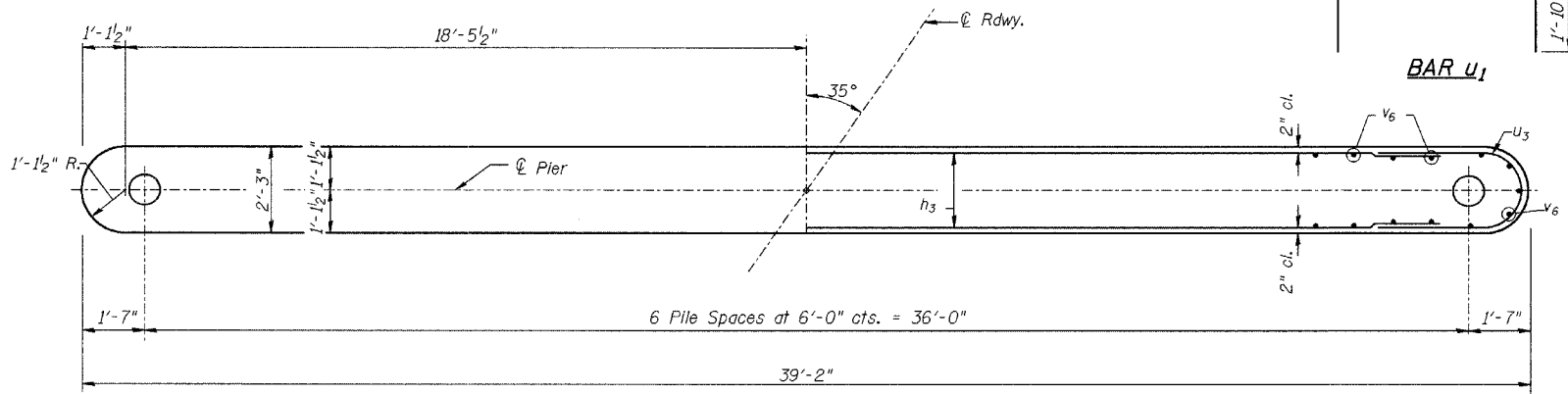
Pile Encasement  
(Typ. Ea. Pile)  
See Sh. 14 of 14  
For Details

**PIER #3**  
**BILL OF MATERIAL**

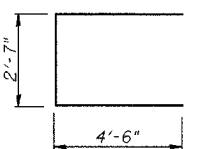
BAR	NO.	SIZE	LENGTH	SHAPE
$h_3$	28	#5	36'-7"	—
$p_2$	10	#7	39'-7"	—
$p_3$	4	#5	35'-10"	—
$s$	36	#4	10'-5"	□
$u_1$	25	#4	6'-4"	□
$u_2$	6	#6	11'-7"	□
$u_3$	28	#5	7'-0"	□
$v_6$	82	#5	13'-10"	—
Concrete Structures			CU YD	52.3
Reinforcement Bars			POUND	3,880
Structure Excavation			CU YD	10
Furnishing Metal Pile Shells 14"			FOOT	480
Driving and Filling Shells			FOOT	480
Test Pile Metal Shells			EACH	1
Concrete Encasement			CU YD	3.1

① See Special Provisions

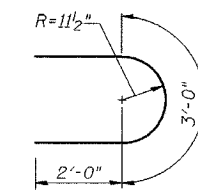
**PILE DATA**  
Type: 14" Metal Shell  
Capacity: 60 Tons  
Est. Length: 80'  
No. Req'd.: 7 (Includes 1 Test Pile)



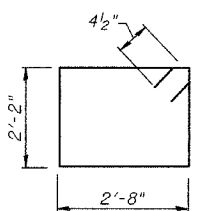
**FOOTING PLAN**



**BAR u2**



**BAR u3**



**BAR s**

**PIER #3**  
**C.H. 19 OVER CONOVER BRANCH**  
**SECTION 02-00088-00-BR**  
**MORGAN COUNTY**  
**STATION 160+96.19**