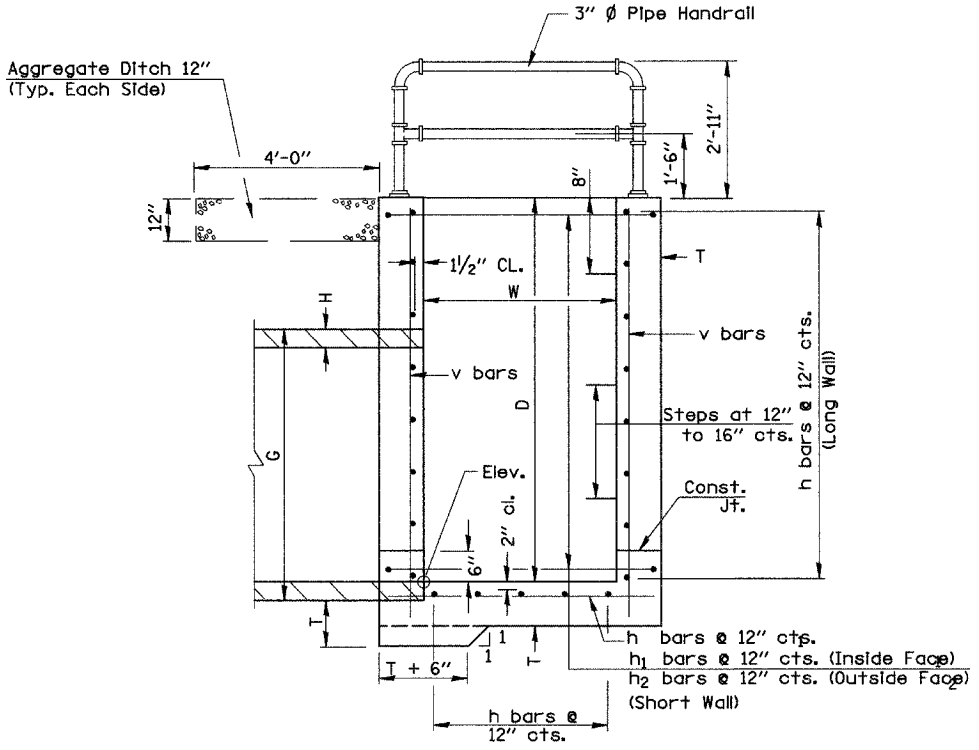


PLAN  
(Typical)

- NOTES**
1. Bend or cut rein. bars as needed to clear pipe culvert.
  2. Maximum spacing between vertical members for the pipe handrail shall be 6'-0" c. to c.
  3. Cut Precast Pipe Culvert on Skew so that end of pipe is flush with drop box.

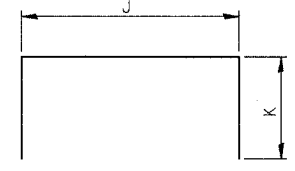


SECTION A-A

- GENERAL NOTES**
1. Class SI Concrete shall be used throughout.
  2. The steps shall be constructed in accordance with Standard 602701
  3. Base plates for pipe handrail shall be anchored to the concrete drop box by 1/2" diameter bolts embedded 6". Lead expander devices meeting the approval of the Engineer shall be used to hold the bolts securely in place.
  4. The contractor may choose to assemble the rail by welding or by the use of threaded fittings.
  5. Aggregate Ditch shall be included with Concrete Box Culverts.

**DROP BOX DATA**

Station	50+45	
Skew	20° RT	
Dist.	62.51'	
Side	RT	
Pipe Dia.	48"	
Elev.	458.21	
A	0'-5 7/8"	
B	5'-1 3/4"	
C	6'-0"	
D	7'-3 5/8"	
E	6'-8"	
F	4'-8"	
G	4'-10"	
H	0'-5"	
T	0'-8"	
W	4'-0"	
h Bars	No.	21
	Size	#4
	Length	7'-0"
h1 Bars	No.	24
	Size	#4
	Length	5'-0"
h2 Bars	No.	16
	Size	#4
	J	5'-0"
	K	2'-0"
v bars	Length	9'-0"
	No.	34
	Size	#4
Concrete Box Culverts	Length	7'-7 1/2"
	Cu. Yd.	5.3
Reinforcement Bars	Lbs.	405
Pipe Handrail	Lin. Ft.	22'-8"



BAR h2

REVISIONS		ILLINOIS DEPARTMENT OF TRANSPORTATION
NAME	DATE	
		<b>DROP BOX DETAIL</b> FAS RTE 611 SEC. 02-00088-00-BR COUNTY HIGHWAY 19 MORGAN COUNTY STATION 50+45

SCALE: \_\_\_\_\_ DRAWN BY KLS  
DATE \_\_\_\_\_ CHECKED BY JRB