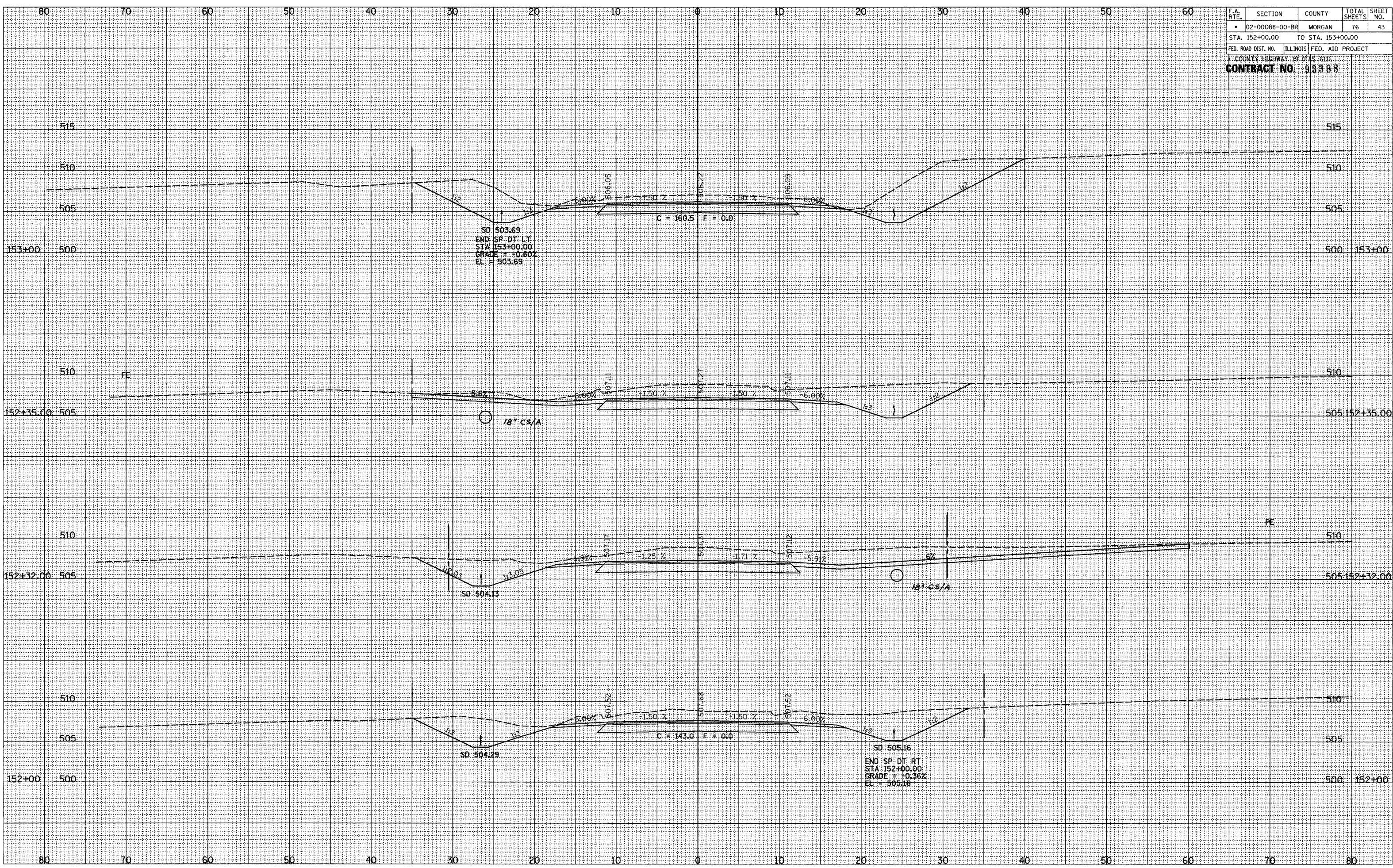


F.A. RTE.	SECTION	COUNTY	TOTAL SHEETS	SHEET NO.
02-00088-00-BR		MORGAN	76	43
STA. 152+00.00		TO STA. 153+00.00		
FED. ROAD DIST. NO.		ILLINOIS FED. AID PROJECT		
COUNTY HIGHWAY NO.		19		
<b>CONTRACT NO. 93388</b>				



SURVEYED \_\_\_\_\_  
 PLOTTED \_\_\_\_\_  
 SURVEY \_\_\_\_\_  
 NOTE BOOK \_\_\_\_\_  
 TEMPLATE \_\_\_\_\_  
 AREAS CHECKED \_\_\_\_\_  
 NO. \_\_\_\_\_

SURVEYED \_\_\_\_\_  
 PLOTTED \_\_\_\_\_  
 SURVEY \_\_\_\_\_  
 NOTE BOOK \_\_\_\_\_  
 TEMPLATE \_\_\_\_\_  
 AREAS CHECKED \_\_\_\_\_  
 NO. \_\_\_\_\_

ROADWAY CROSS SECTIONS LITERBERRY-PRENTICE ROAD (CH 19)