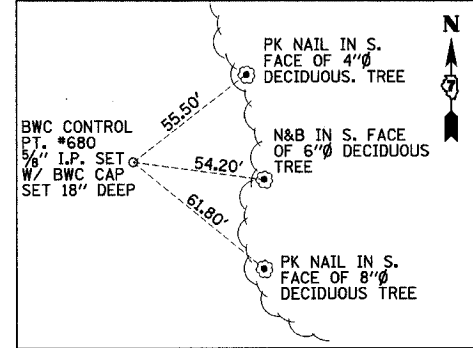
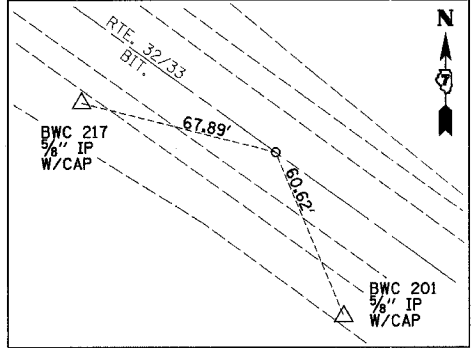


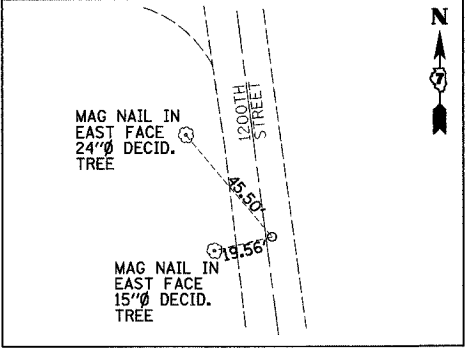
PC OF PROP. 5 STA. 988+35.24 (MAG NAIL)



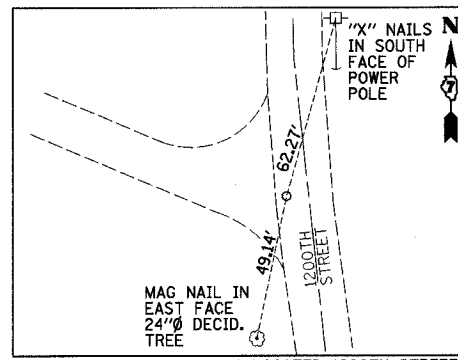
P.O.T. PROP. 5 STA. 1017+37.29 OFFSET 377.64' LT (MAG NAIL)



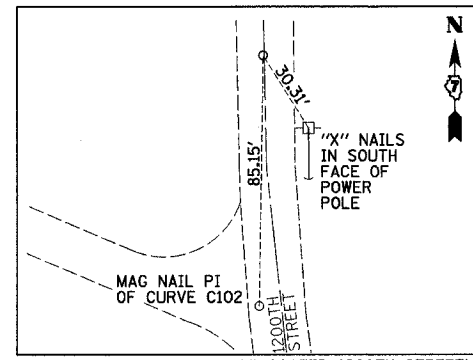
CL RELOCATED 1200TH STREET STA. 200+00.00 = CL RTE. 32/33 STA. 1015+03.93 (MAG NAIL)



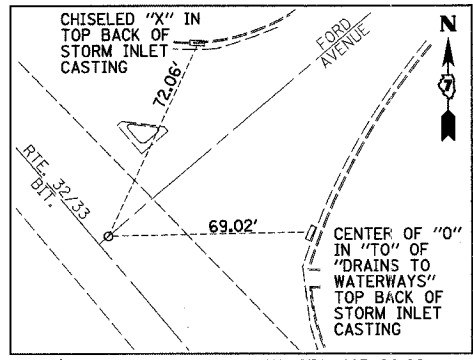
PC PROP. CURVE C102 (RELOCATED 1200TH STREET) STA. 210+96.27 (MAG NAIL)



PI PROP. CURVE C102 (RELOCATED 1200TH STREET) STA. 211+81.42 (MAG NAIL)



PT PROP. CURVE C102 (RELOCATED 1200TH STREET) STA. 212+65.74 (MAG NAIL)



CL PROP. FORD AVE. (SOUTH) STA. 185+00.00 = CL RTE. 32/33 STA. 42+30.72 (MAG NAIL & FLAGGING)

BM #53  
25' RT. STA. 940+57, ELEV. 608.01  
CHISELED "□" SOUTHEAST CORNER  
CONCRETE HEADWALL

BM #6  
30' RT. STA. 951+33, ELEV. 606.30  
CHISELED "□" SOUTH END CONCRETE BOX CULVERT

BM #7  
36' RT. STA. 971+17, ELEV. 606.61  
RR SPIKE IN POWER POLE

BM #55  
45' RT. STA. 974+88, ELEV. 605.86  
PAINT MARK ON NORTH CAP BOLT OF  
FIRE HYDRANT AT LYNN ACRES ROAD AND  
IL RTE 32/33

BM #8  
78' RT. STA. 981+01, ELEV. 600.57  
RR SPIKE IN POWER POLE

BM #9  
121' RT. STA. 991+87, ELEV. 558.84  
CHISELED "X" IN NORTH BOLT OF FIRE  
HYDRANT AT WABASH RIVERHILLS AND  
IL RTE 32/33

BM #250078  
22' RT. STA. 1010+31, ELEV. 543.53  
CHISELED "□" ABOVE BRIDGE NAME PLATE

BM 250077  
22' RT. STA. 1017+17, ELEV. 543.66  
CHISELED "□" ABOVE BRIDGE NAME PLATE

BM #60  
79' RT. STA. 1024+86, ELEV. 548.63  
CHISELED "X" ON NORTH FLANGE BOLT  
OF FIRE HYDRANT

BM #12  
18' RT. STA. 1030+71, ELEV. 570.76  
CHISELED "□" BACK OF GUTTER AT  
SOUTHWEST CORNER OF DROP INLET

BM #59  
56' LT. STA. 47+13, ELEV. 598.48  
CHISELED "□" SOUTH EDGE OF CONCRETE  
PARKING LOT OF EFFINGHAM PLAZA  
10.5' SOUTH OF PLAZA SIGN

REVISIONS	
NAME	DATE

ILLINOIS DEPARTMENT OF TRANSPORTATION

CONTROL TIES  
AND BENCHMARKS  
SHEET 1 OF 1

DRAWN BY NJV  
CHECKED BY TLS

DATE 5/2/02