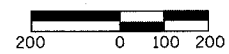
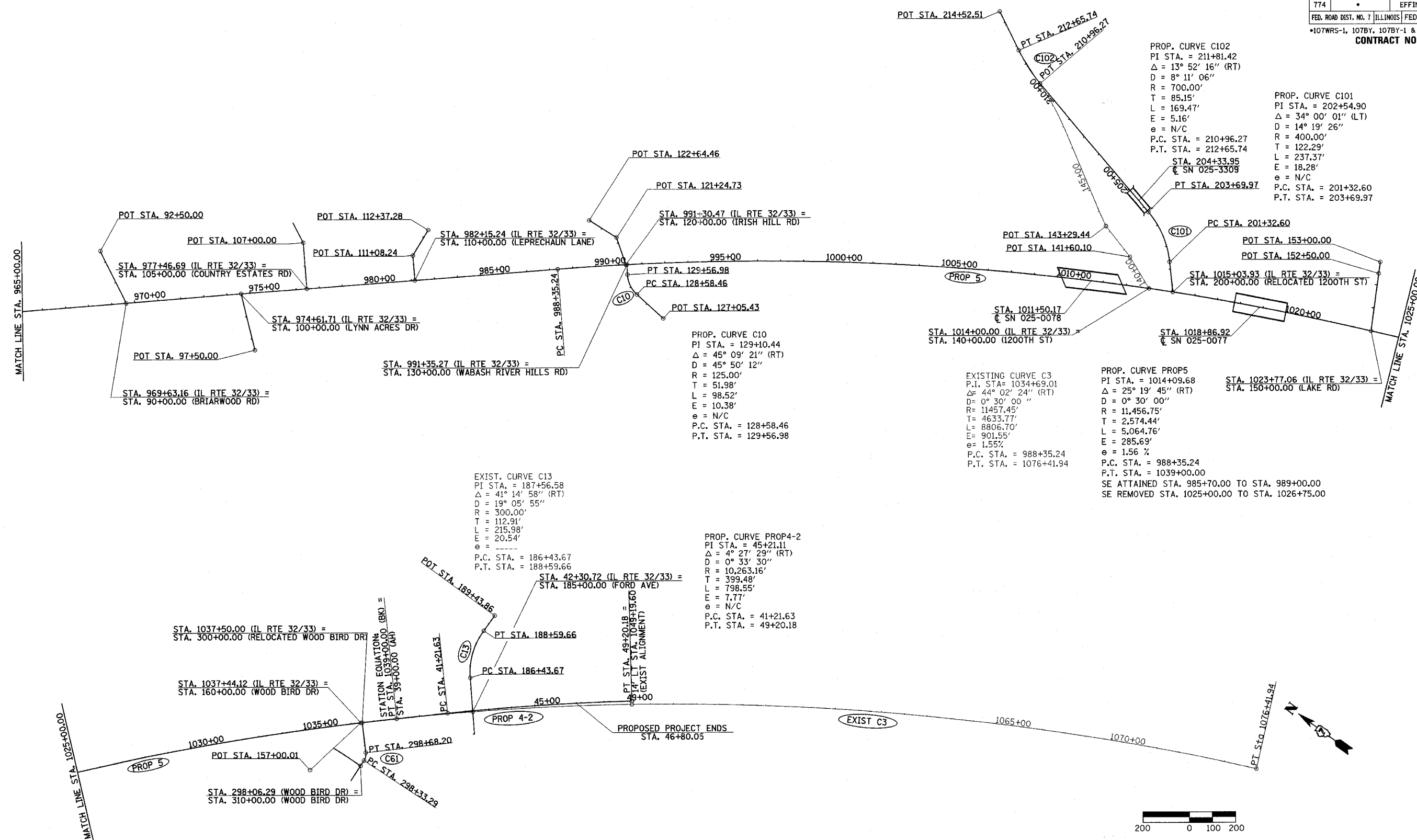


F.A.P. RTE.	SECTION	COUNTY	TOTAL SHEETS	SHEET NO.
774		EFFINGHAM	273	31
FED. ROAD DIST. NO. 7		ILLINOIS	FED. AID PROJECT	
*107WRS-1, 107BY, 107BY-1 & 107B-2				
CONTRACT NO. 94827				



REVISIONS	
NAME	DATE

ILLINOIS DEPARTMENT OF TRANSPORTATION

HORIZONTAL ALIGNMENT PLAN
SHEET 2 OF 2

SCALE: 1"=200'
DATE 4/22/02

DRAWN BY NJV
CHECKED BY BKB

PROP. CURVE C61
PI STA. = 298+51.49
Δ = 40° 00' 00" (LT)
D = 114° 35' 30"
R = 50.00'
T = 18.20'
L = 34.91'
E = 3.21'
e = N/C
P.C. STA. = 298+33.29
P.T. STA. = 298+68.20

EXIST. CURVE C13
PI STA. = 187+56.58
Δ = 41° 14' 58" (RT)
D = 19° 05' 55"
R = 300.00'
T = 112.91'
L = 215.98'
E = 20.54'
e = ----
P.C. STA. = 186+43.67
P.T. STA. = 188+59.66

PROP. CURVE PROP4-2
PI STA. = 45+21.11
Δ = 4° 27' 29" (RT)
D = 0° 33' 30"
R = 10,263.16'
T = 399.48'
L = 798.55'
E = 7.77'
e = N/C
P.C. STA. = 41+21.63
P.T. STA. = 49+20.18

PROP. CURVE C10
PI STA. = 129+10.44
Δ = 45° 09' 21" (RT)
D = 45° 50' 12"
R = 125.00'
T = 51.98'
L = 98.52'
E = 10.38'
e = N/C
P.C. STA. = 128+58.46
P.T. STA. = 129+56.98

EXISTING CURVE C3
P.I. STA. = 1034+69.01
Δ = 44° 02' 24" (RT)
D = 0° 30' 00"
R = 11457.45'
T = 4633.77'
L = 8806.70'
E = 901.55'
e = 1.55%
P.C. STA. = 988+35.24
P.T. STA. = 1076+41.94

PROP. CURVE PROP5
PI STA. = 1014+09.68
Δ = 25° 19' 45" (RT)
D = 0° 30' 00"
R = 11,456.75'
T = 2,574.44'
L = 5,064.76'
E = 285.69'
e = 1.56%
P.C. STA. = 988+35.24
P.T. STA. = 1039+00.00

SE ATTAINED STA. 985+70.00 TO STA. 989+00.00
SE REMOVED STA. 1025+00.00 TO STA. 1026+75.00