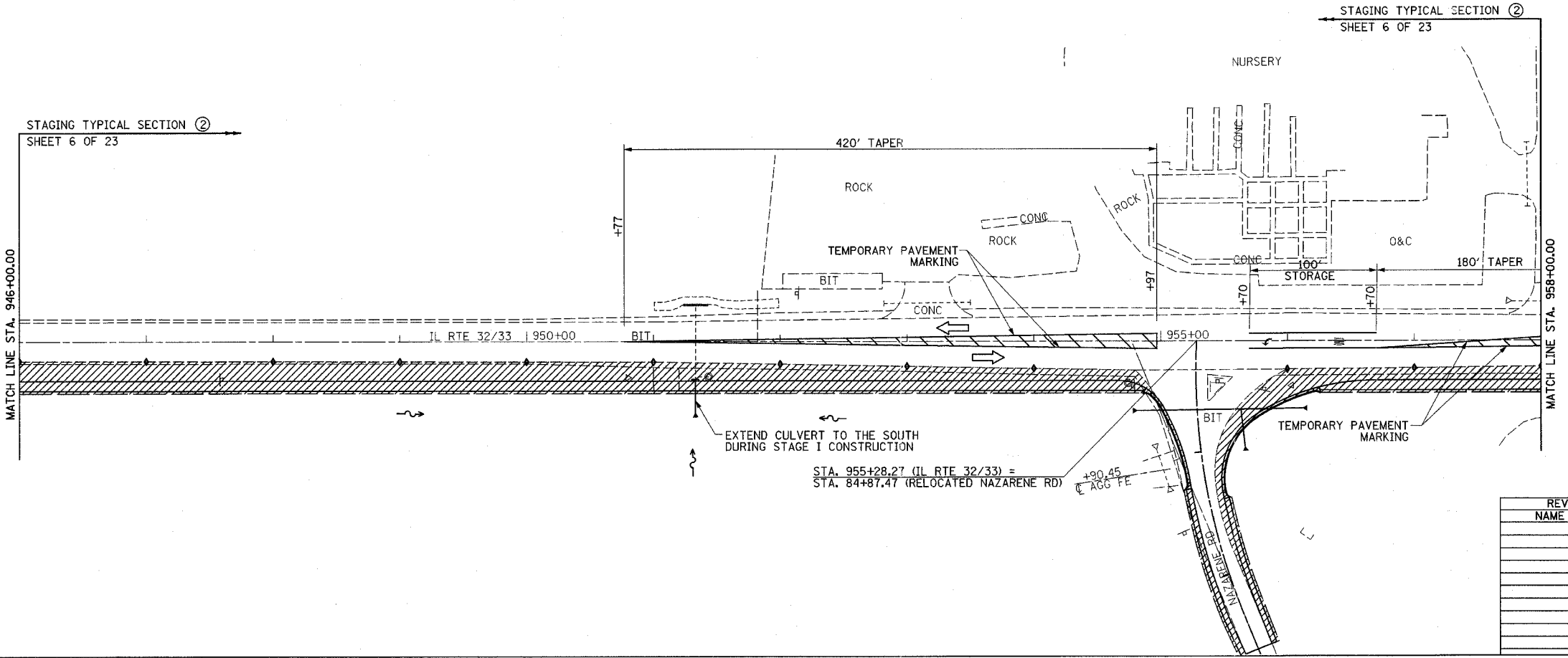
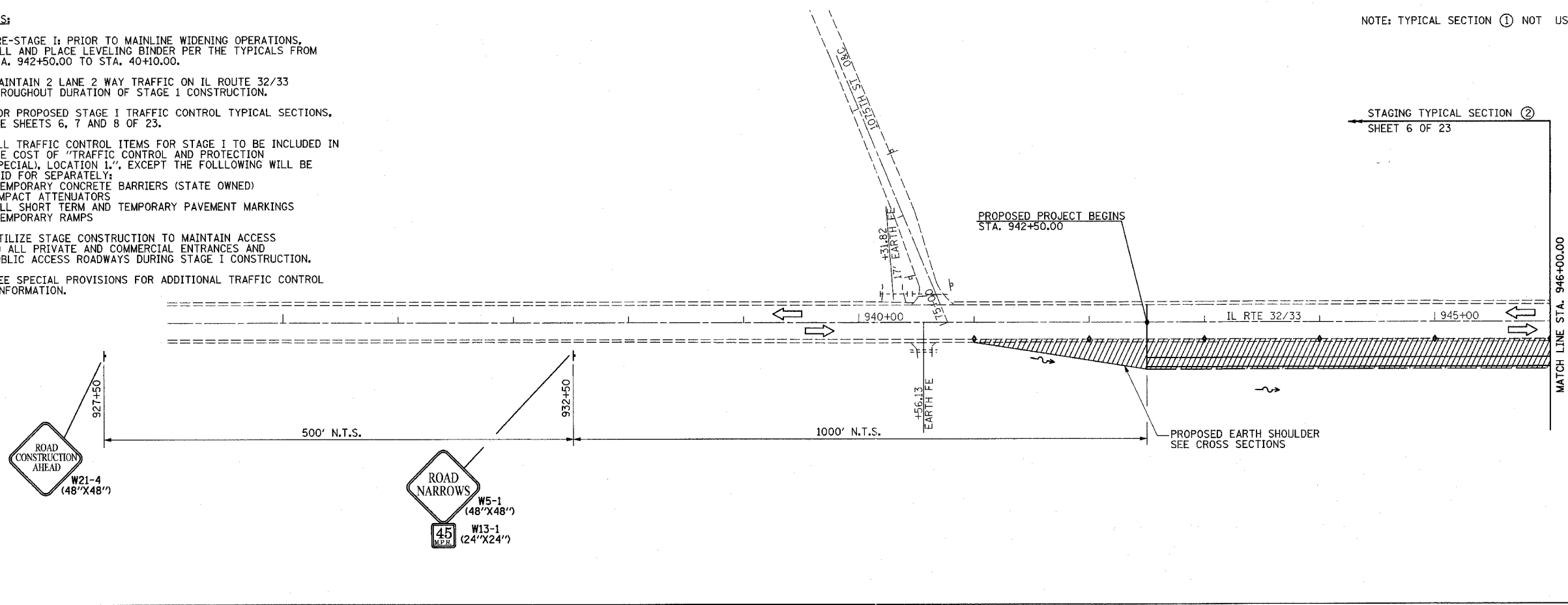
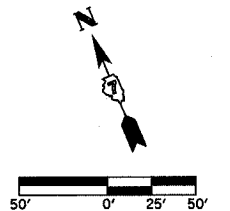


NOTES:

1. PRE-STAGE I: PRIOR TO MAINLINE WIDENING OPERATIONS, MILL AND PLACE LEVELING BINDER PER THE TYPICALS FROM STA. 942+50.00 TO STA. 40+10.00.
2. MAINTAIN 2 LANE 2 WAY TRAFFIC ON IL ROUTE 32/33 THROUGHOUT DURATION OF STAGE 1 CONSTRUCTION.
3. FOR PROPOSED STAGE I TRAFFIC CONTROL TYPICAL SECTIONS, SEE SHEETS 6, 7 AND 8 OF 23.
4. ALL TRAFFIC CONTROL ITEMS FOR STAGE I TO BE INCLUDED IN THE COST OF "TRAFFIC CONTROL AND PROTECTION (SPECIAL), LOCATION 1," EXCEPT THE FOLLOWING WILL BE PAID FOR SEPARATELY:
 -TEMPORARY CONCRETE BARRIERS (STATE OWNED)
 -IMPACT ATTENUATORS
 -ALL SHORT TERM AND TEMPORARY PAVEMENT MARKINGS
 -TEMPORARY RAMPS
5. UTILIZE STAGE CONSTRUCTION TO MAINTAIN ACCESS TO ALL PRIVATE AND COMMERCIAL ENTRANCES AND PUBLIC ACCESS ROADWAYS DURING STAGE I CONSTRUCTION.
6. SEE SPECIAL PROVISIONS FOR ADDITIONAL TRAFFIC CONTROL INFORMATION.

NOTE: TYPICAL SECTION ① NOT USED

F.A.P. RTE.	SECTION	COUNTY	TOTAL SHEETS	SHEET NO.
774		EFFINGHAM	273	32
FED. ROAD DIST. NO. 7		ILLINOIS	FED. AID PROJECT	
		*107WRS-1, 107BY, 107BY-1 & 107B-2		
CONTRACT NO. 94827				



LEGEND
 STAGE 1 CONSTRUCTION
 BARRICADES, TYPE II

REVISIONS	
NAME	DATE

ILLINOIS DEPARTMENT OF TRANSPORTATION
 TRAFFIC CONTROL
 STAGE I CONSTRUCTION
 SHEET 1 OF 23
 DATE 8/02
 DRAWN BY ASB
 CHECKED BY RDW