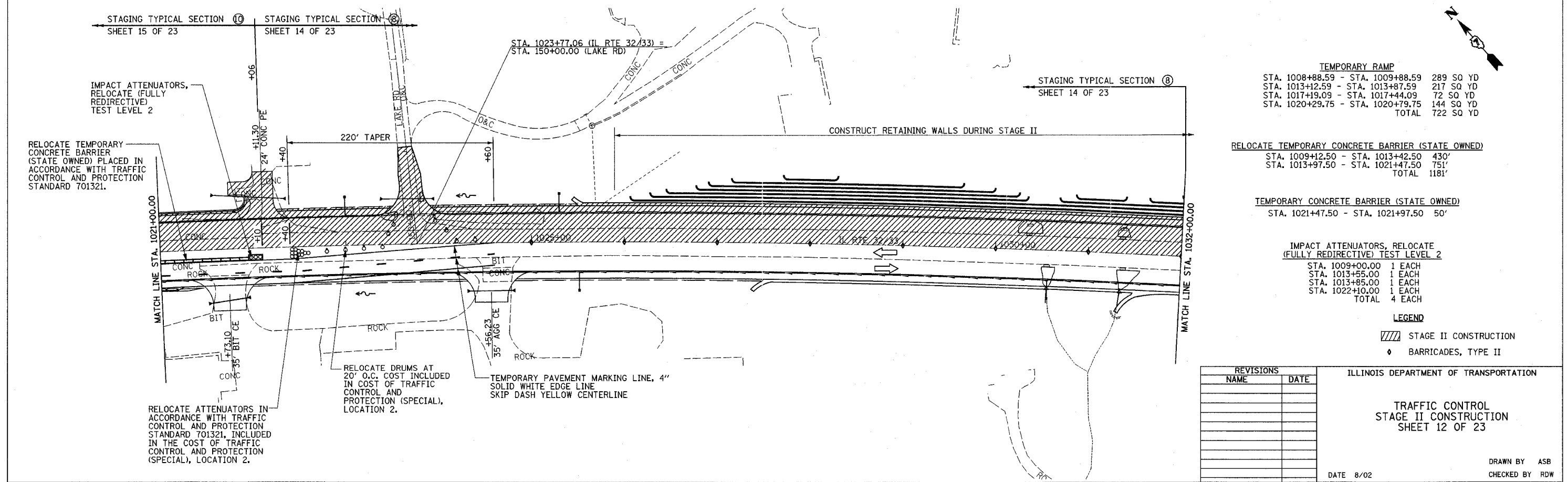
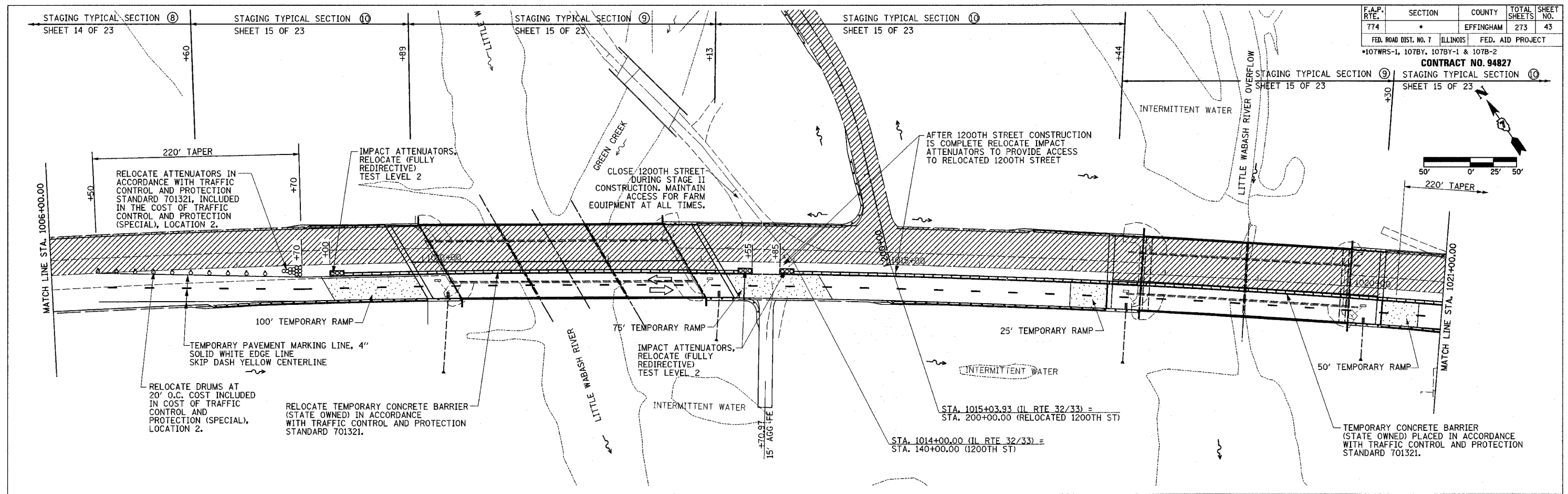
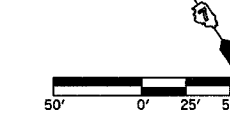


F.A.P. RTE.	SECTION	COUNTY	TOTAL SHEETS	SHEET NO.
774		EFFINGHAM	273	43
FED. ROAD DIST. NO. 7 ILLINOIS FED. AID PROJECT				
*107WRS-1, 107BY, 107BY-1 & 107B-2				

CONTRACT NO. 94827

STAGING TYPICAL SECTION 9 SHEET 15 OF 23

STAGING TYPICAL SECTION 10 SHEET 15 OF 23



TEMPORARY RAMP

STA. 1008+88.59 - STA. 1009+88.59	289 SQ YD
STA. 1013+12.59 - STA. 1013+87.59	217 SQ YD
STA. 1017+19.09 - STA. 1017+44.09	72 SQ YD
STA. 1020+29.75 - STA. 1020+79.75	144 SQ YD
TOTAL	722 SQ YD

RELOCATE TEMPORARY CONCRETE BARRIER (STATE OWNED)

STA. 1009+12.50 - STA. 1013+42.50	430'
STA. 1013+97.50 - STA. 1021+47.50	751'
TOTAL	1181'

TEMPORARY CONCRETE BARRIER (STATE OWNED)

STA. 1021+47.50 - STA. 1021+97.50	50'
-----------------------------------	-----

IMPACT ATTENUATORS, RELOCATE (FULLY REDIRECTIVE) TEST LEVEL 2

STA. 1009+00.00	1 EACH
STA. 1013+55.00	1 EACH
STA. 1013+85.00	1 EACH
STA. 1022+10.00	1 EACH
TOTAL	4 EACH

LEGEND

▨ STAGE II CONSTRUCTION

◆ BARRICADES, TYPE II

REVISIONS	
NAME	DATE

ILLINOIS DEPARTMENT OF TRANSPORTATION

TRAFFIC CONTROL
STAGE II CONSTRUCTION
SHEET 12 OF 23

DATE 8/02

DRAWN BY ASB
CHECKED BY RDW