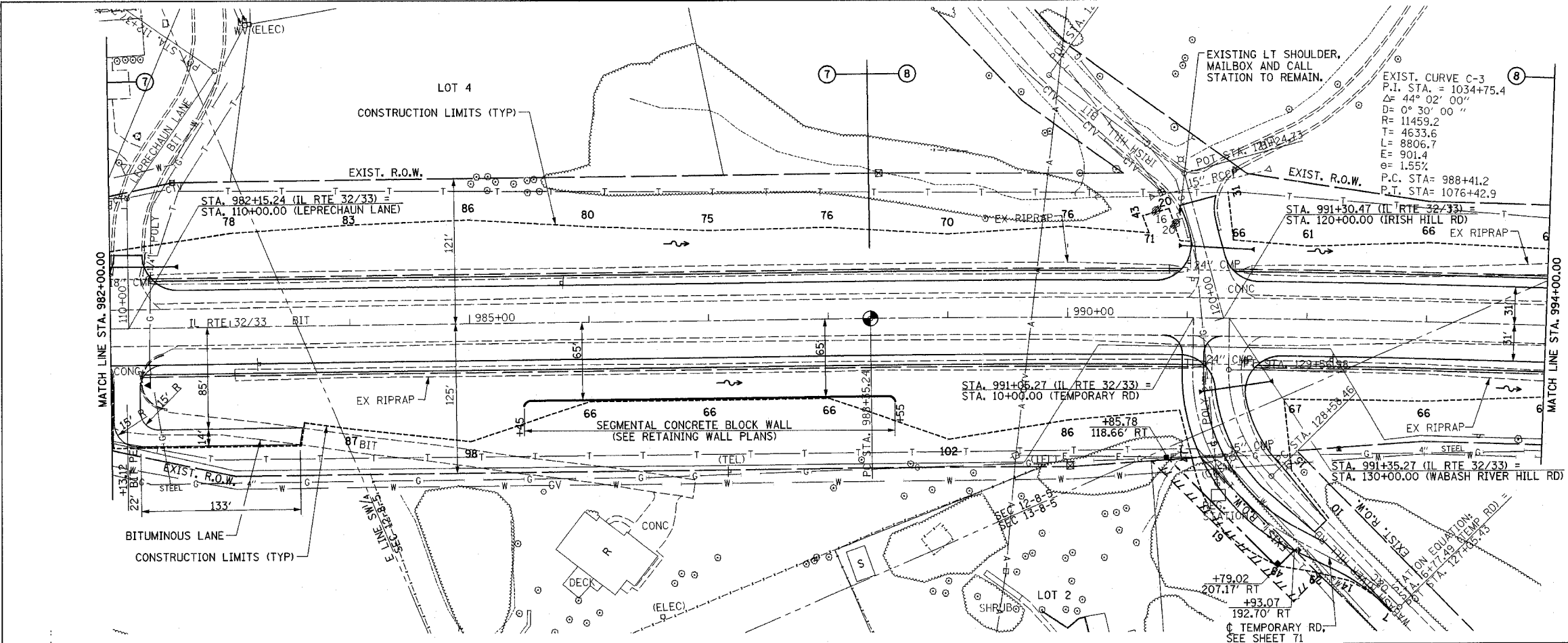


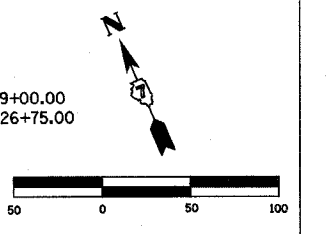
PLAN	DATE
REVISION	BY
NOTE BOOK	NO.
NO. OF WAY CHECKED	
NO. OF FILE NAME	

PROFILE	DATE
GRADES CHECKED	BY
REMARKS	NO.
STRUCTURE	
NOTATION	



PROP. CURVE PROP5
 PI STA. = 1014+09.68
 Δ = 25° 19' 45" (RT)
 D = 0° 30' 00"
 R = 11,456.75'
 T = 2,574.44'
 L = 5,064.76'
 E = 285.69'
 e = 1.56 %
 P.C. STA. = 988+35.24
 P.T. STA. = 1039+00.00
 SE ATTAINED STA. 985+70.00 TO STA. 989+00.00
 SE REMOVED STA. 1025+00.00 TO STA. 1026+75.00

F.A.P. RTE.	SECTION	COUNTY	TOTAL SHEETS	SHEET NO.
774	*	EFFINGHAM	273	59
STA. 982+00.00		TO STA. 994+00.00		
FED. ROAD DIST. NO. 7 ILLINOIS FED. AID PROJECT				
* 107WRS-1, 107BY, 107BY-1 & 107B-2				
CONTRACT NO. 94827				



PERMANENT SURVEY MARKER, TYPE I
 PC STA. 988+35.24 1 EACH

COMBINATION CURB AND GUTTER REMOVAL
 RT STA. 982+25.26 - STA. 982+46.41 65'

GUTTER REMOVAL
 LT STA. 110+45.14 - STA. 110+61.00 16'
 RT STA. 110+45.14 - STA. 110+61.00 16'
 TOTAL 32'

PORTLAND CEMENT CONCRETE SHOULDER REMOVAL
 RT STA. 120+72.00 - STA. 121+00.00 8 SO YD

