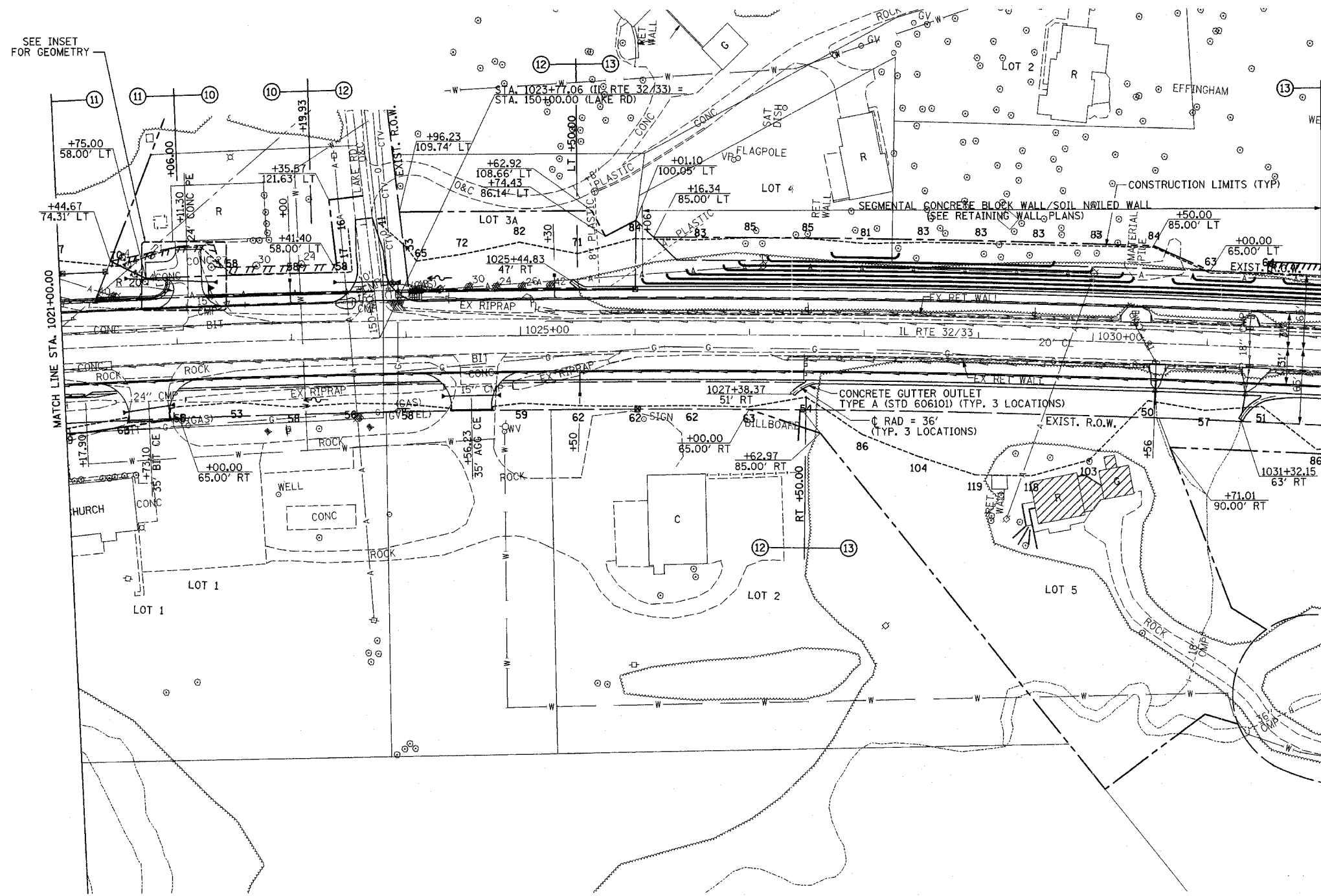
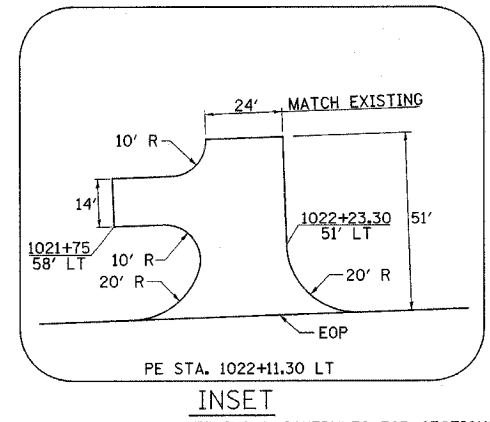


F.A.P. RTE.	SECTION	COUNTY	TOTAL SHEETS	SHEET NO.
774		EFFINGHAM	273	62
STA. 1021+00.00 TO STA. 1032+00.00				
FED. ROAD DIST. NO. 7 ILLINOIS FED. AID PROJECT				
107WRS-1, 107BY, 107BY-1 & 107B-2				
<b>CONTRACT NO. 94827</b>				

**SHEET NOTE**  
 THE CONTRACTOR SHALL INSTALL 18"Ø PIPE CULVERT RT STA. 1030+56.00 AND 1031+38.00 TO EXTEND DRAINS BEYOND EMBANKMENT LINE. THE CONTRACTOR SHALL MAINTAIN THE EXISTING STORM SEWER CROSSING AT STA. 1030+46 AND STA. 1031+37 UNTIL DRAINAGE IN STAGE II IS COMPLETE ENOUGH TO DRAIN THE NORTH SIDE OF IL ROUTE 32/33 TO THE WEST.



<b>PAVED DITCH REMOVAL</b>		
RT STA. 1021+00.00 - STA. 1021+44.49	45'	
LT STA. 1021+00.00 - STA. 1021+25.45	28'	
	TOTAL	73'
<b>GUTTER OUTLET REMOVAL</b>		
LT STA. 1025+16.18 - STA. 1025+61.30	1 EACH	
RT STA. 1025+77.57 - STA. 1026+49.74	1 EACH	
	TOTAL	2 EACH
<b>CONCRETE GUTTER, TYPE A</b>		
LT STA. 1025+55.00 - STA. 1032+00.00	645'	
RT STA. 1027+55.00 - STA. 1031+50.00	395'	
RT STA. 1031+75.00 - STA. 1032+00.00	25'	
	TOTAL	1065'
<b>CLASS SI CONCRETE (OUTLET)</b>		
LT STA. 1025+50.00	4.0 CU YD	
RT STA. 1027+50.00	4.5 CU YD	
RT STA. 1031+75.00	5.5 CU YD	
	TOTAL	14.0 CU YD
<b>RETAINING WALL REMOVAL</b>		
LT STA. 1025+69.00 - STA. 1030+24.00	1520 SQ FT	
RT STA. 1027+33.00 - STA. 1030+51.00	1062 SQ FT	
LT STA. 1030+50.00 - STA. 1031+31.00	271 SQ FT	
RT STA. 1030+64.00 - STA. 1031+32.00	227 SQ FT	
LT STA. 1031+43.00 - STA. 1032+00.00	190 SQ FT	
RT STA. 1031+55.00 - STA. 1032+00.00	150 SQ FT	
	TOTAL	3420 SQ FT
<b>PILLAR REMOVAL</b>		
LT STA. 1023+59.76	1 EACH	
LT STA. 1023+85.31	1 EACH	
	TOTAL	2 EACH
<b>PIPE UNDERDRAINS FABRIC LINED TRENCH, 6"</b>		
LT STA. 1021+00.00 - STA. 1032+00.00	1100'	
RT STA. 1021+00.00 - STA. 1032+00.00	1100'	
	TOTAL	2200'
<b>PIPE UNDERDRAINS 6" (SPECIAL)</b>		
LT STA. 1023+00.00	17'	
LT STA. 1025+30.00	17'	
RT STA. 1025+50.00	17'	
RT STA. 1030+56.00	17'	
	TOTAL	68'
<b>PIPE UNDERDRAIN REMOVAL</b>		
LT STA. 1021+00.00 - STA. 1023+50.00	250'	
RT STA. 1021+00.00 - STA. 1024+40.00	340'	
RT STA. 1025+22.00 - STA. 1032+00.00	678'	
	TOTAL	1268'
<b>CONCRETE HEADWALL FOR PIPE DRAINS</b>		
LT STA. 1023+00.00	1 EACH	
LT STA. 1025+30.00	1 EACH	
RT STA. 1025+50.00	1 EACH	
RT STA. 1030+56.00	1 EACH	
	TOTAL	4 EACH
<b>REMOVING INLETS</b>		
LT STA. 1030+35.79	2 EACH	
RT STA. 1030+55.78	1 EACH	
LT STA. 1031+36.56	2 EACH	
RT STA. 1031+37.75	1 EACH	
	TOTAL	6 EACH
<b>STORM SEWER TO BE FILLED</b>		
LT STA. 1030+36.00	0.7 CU YDS	
LT & RT STA. 1030+36.00 - STA. 1030+56.00	2.5 CU YDS	
RT STA. 1030+56.00	2.6 CU YDS	
LT STA. 1031+37.00	0.6 CU YDS	
LT & RT STA. 1031+37.00 - STA. 1031+38.00	2.2 CU YDS	
RT STA. 1031+38.00	2.6 CU YDS	
	TOTAL	11.2 CU YDS



**PROP. CURVE PROP5**  
 P.I. STA. = 1014+09.68  
 $\Delta = 25^\circ 19' 45''$  (RT)  
 $D = 0^\circ 30' 00''$   
 $R = 11,456.75'$   
 $T = 2,574.44'$   
 $L = 5,064.76'$   
 $E = 285.69'$   
 $e = 1.56\%$   
 P.C. STA. = 988+35.24  
 P.T. STA. = 1039+00.00  
 SE ATTAINED STA. 985+70.00 TO STA. 989+00.00  
 SE REMOVED STA. 1025+00.00 TO STA. 1026+75.00

**EXIST. CURVE C-3**  
 P.I. STA. = 1034+75.4  
 $\Delta = 44^\circ 02' 00''$   
 $D = 0^\circ 30' 00''$   
 $R = 11,459.2'$   
 $T = 4,633.6'$   
 $L = 8,806.7'$   
 $E = 901.4'$   
 $e = 1.55\%$   
 P.C. STA. = 988+41.2  
 P.T. STA. = 1076+42.9

**PIPE CULVERT, CLASS A, TYPE 1, 18"**  
 RT STA. 1030+56.00 18'  
 RT STA. 1031+38.00 18'  
 TOTAL 36'

**TERMINAL MARKER - DIRECT APPLIED**  
 RT STA. 1021+17.90 1 EACH

**BUILDING REMOVAL NO. 2**  
 RT STA. 1029+75.00 1 L SUM

**FLARED END SECTION REMOVAL**  
 RT STA. 1030+56.00 1 EACH  
 RT STA. 1031+38.00 1 EACH  
 TOTAL 2 EACH

**STEEL PLATE BEAM GUARDRAIL, TYPE A (SPECIAL)**  
 LT STA. 1021+80.40 - STA. 1021+95.40 24'

PLAN	SURVEYED	DATE
NOTE BOOK	GRADES CHECKED	
	RT. OF WAY CHECKED	
	FOOT CURE	

PROFILE	SURVEYED	DATE
NOTE BOOK	GRADES CHECKED	
	RT. OF WAY CHECKED	
	STRUCTURE NOTATIONS CHECKED	