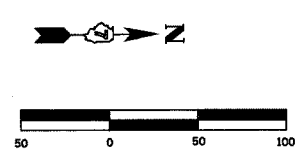
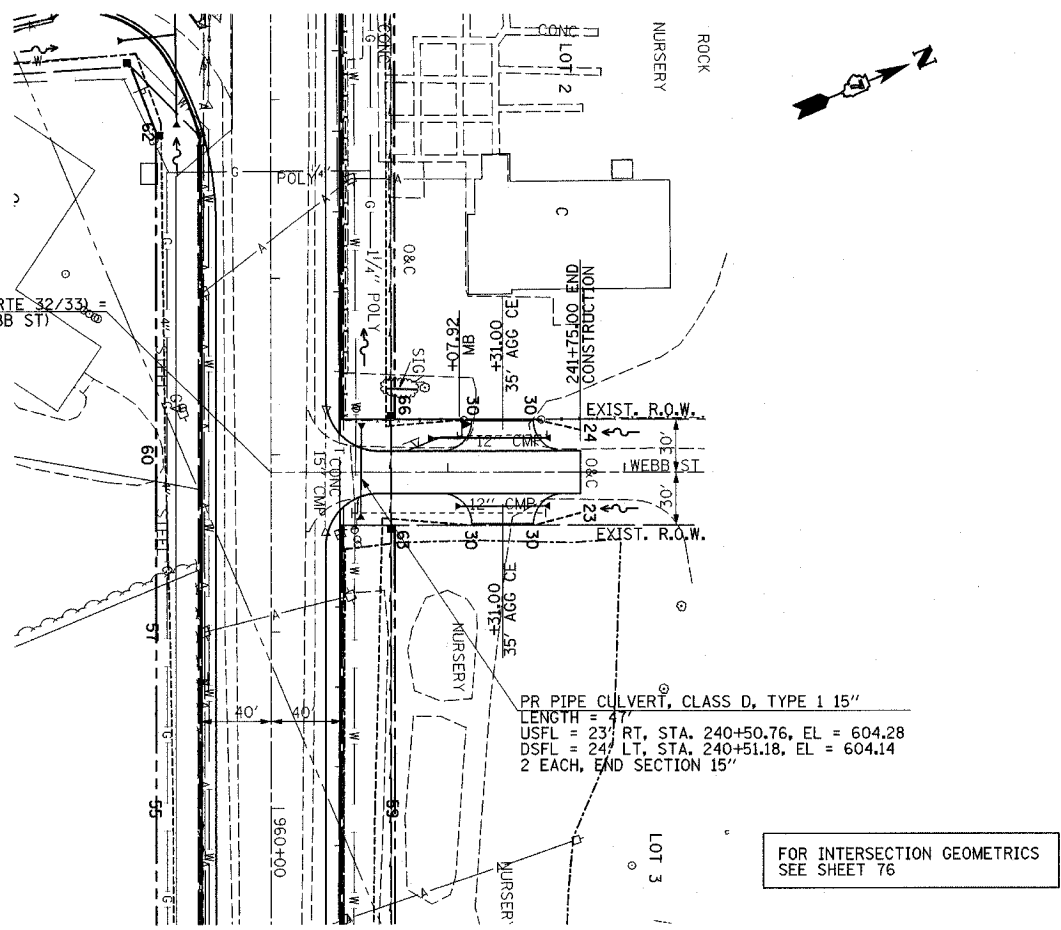


F.A.P. RTE.	SECTION	COUNTY	TOTAL SHEETS	SHEET NO.
774		EFFINGHAM	273	68
FED. ROAD DIST. NO. 7 ILLINOIS FED. AID PROJECT				
• 107WRS-1, 107BY, 107BY-1 & 107B-2				
CONTRACT NO. 94827				



PLAN	SURVEYED	DATE
NOTE BOOK	ALIGNED	
	CHECKED	
	BY	
	NO.	

STA. 958+10.00 (IL RTE 32/33) =  
STA. 240+00.00 (WEBB ST)

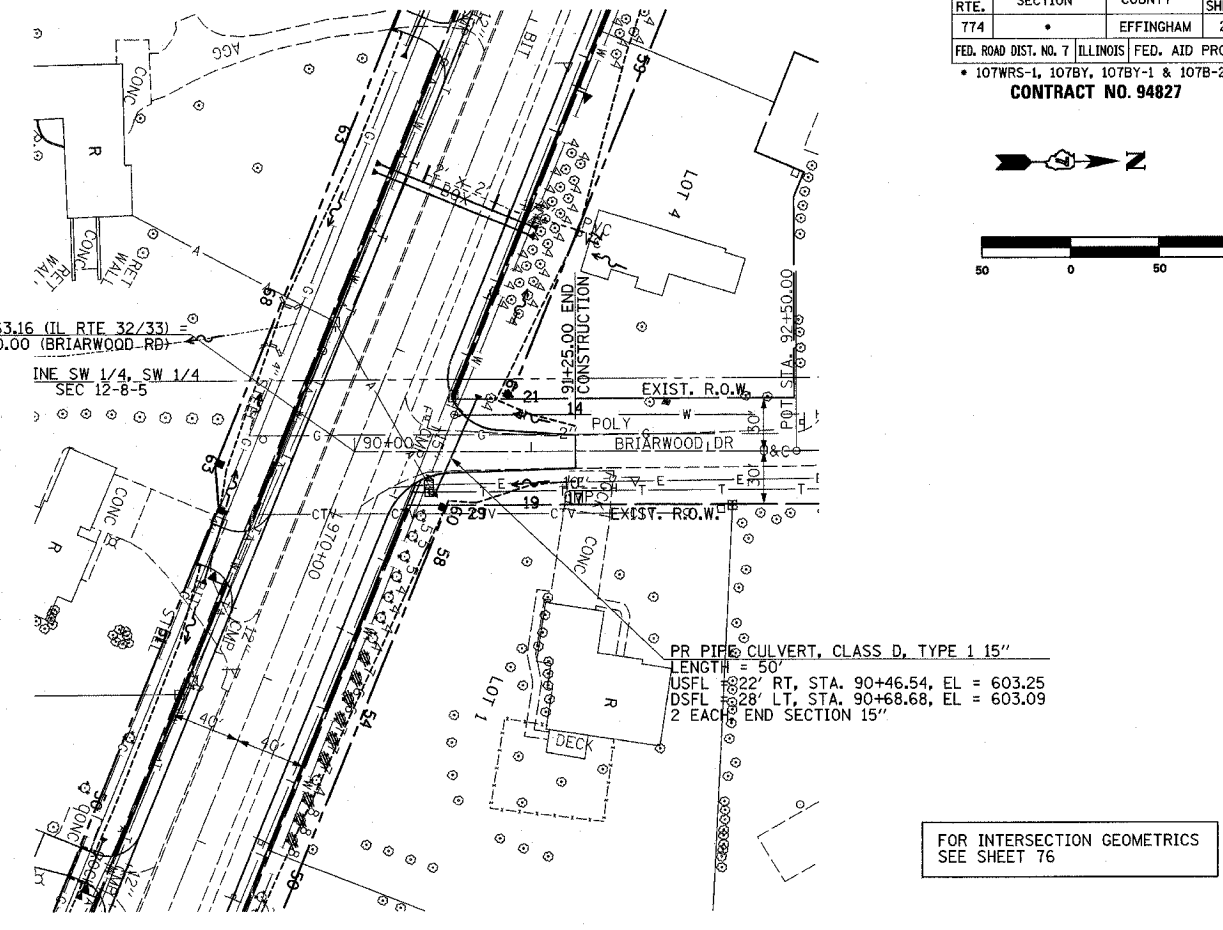


PR PIPE CULVERT, CLASS D, TYPE 1 15"  
LENGTH = 47'  
USFL = 23' RT, STA. 240+50.76, EL = 604.28  
DSFL = 24' LT, STA. 240+51.18, EL = 604.14  
2 EACH, END SECTION 15'

FOR INTERSECTION GEOMETRICS  
SEE SHEET 76

PROFILE	SURVEYED	DATE
NOTE BOOK	GRADES	
	NOTED	
	BY	
	NO.	

STA. 969+63.16 (IL RTE 32/33) =  
STA. 90+00.00 (BRIARWOOD DR)



PR PIPE CULVERT, CLASS D, TYPE 1 15"  
LENGTH = 50'  
USFL = 22' RT, STA. 90+46.54, EL = 603.25  
DSFL = 28' LT, STA. 90+68.68, EL = 603.09  
2 EACH, END SECTION 15'

FOR INTERSECTION GEOMETRICS  
SEE SHEET 76

