

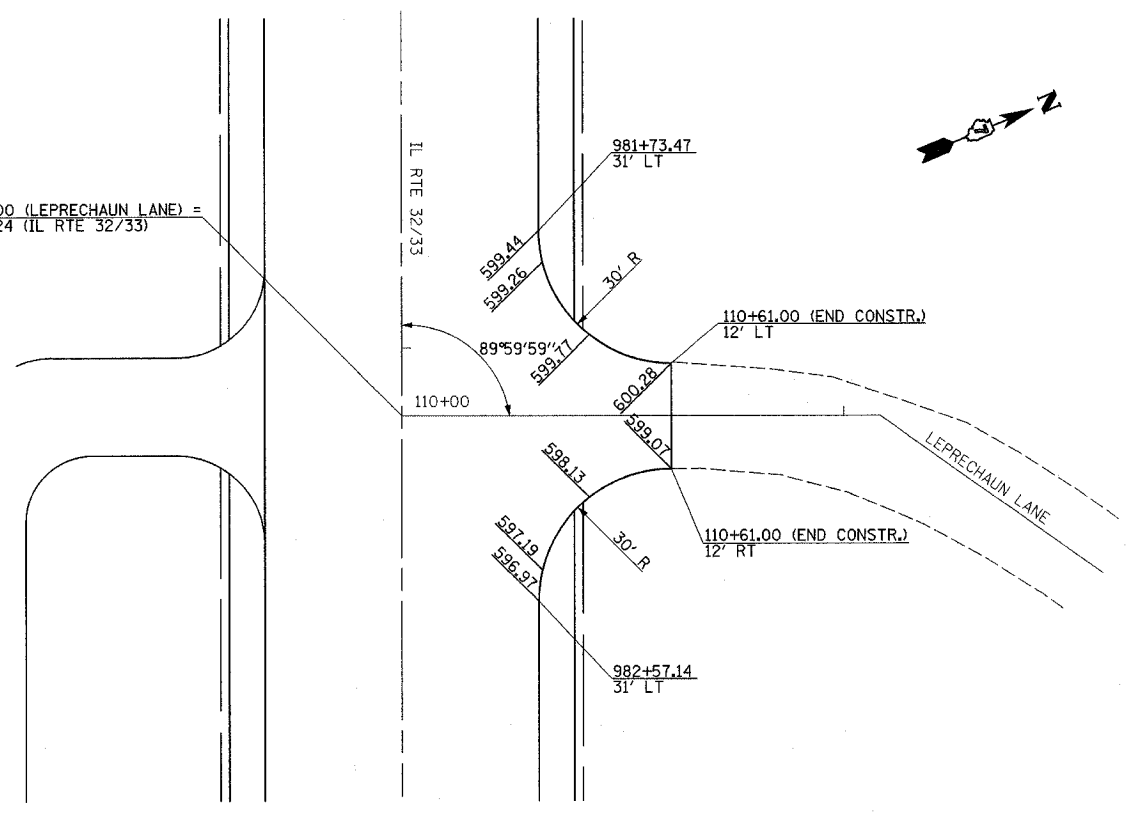
| F.A.P. RTE. | SECTION | COUNTY | TOTAL SHEETS | SHEET NO. |
|-------------|---------|-----------|--------------|-----------|
| 774 | | EFFINGHAM | 273 | 77 |

FED. ROAD DIST. NO. 7 ILLINOIS FED. AID PROJECT
 *107WRS-1, 107BY, 107BY-1 & 107B-2

CONTRACT NO. 94827

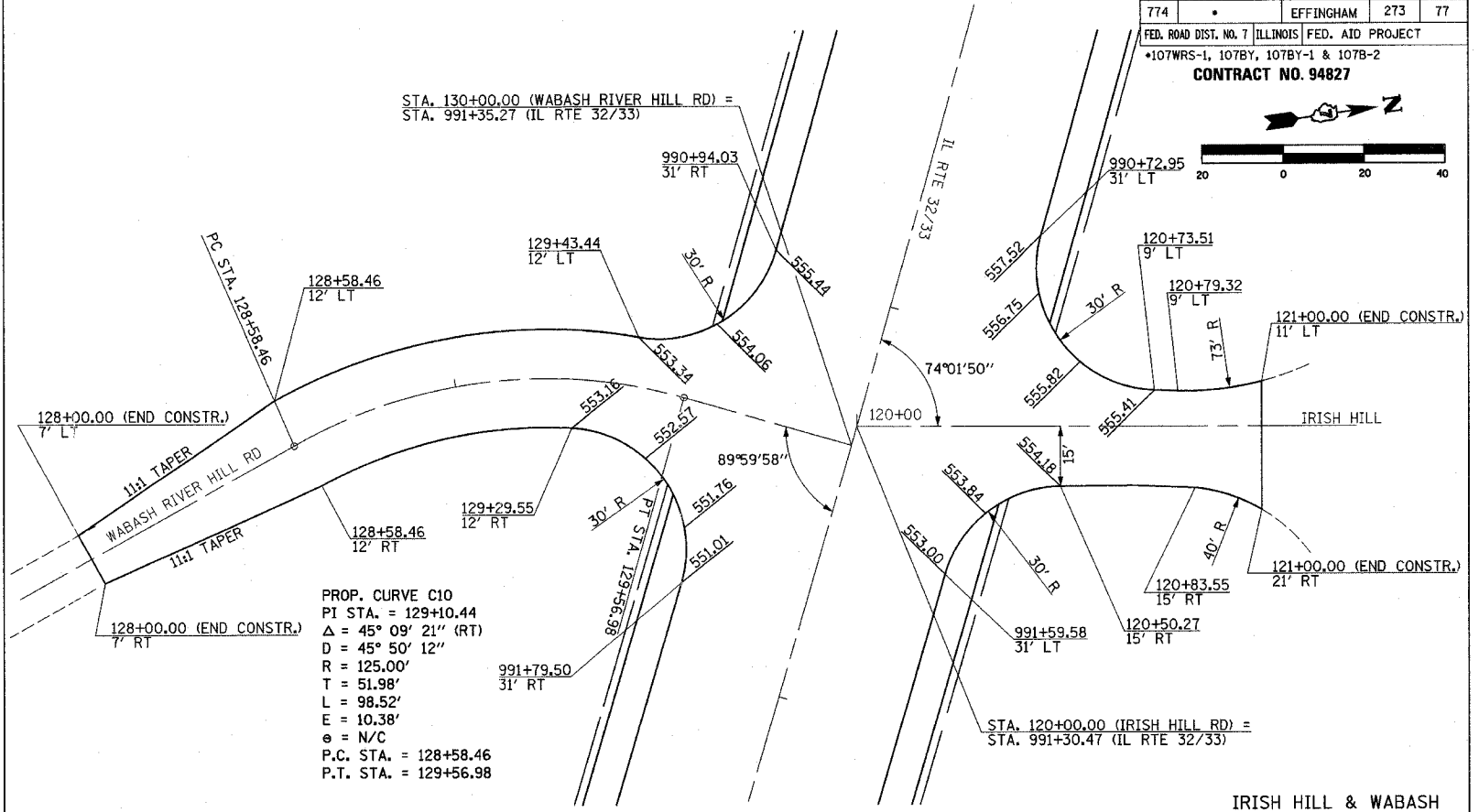


STA. 110+00.00 (LEPRECHAUN LANE) =
 STA. 982+15.24 (IL RTE 32/33)



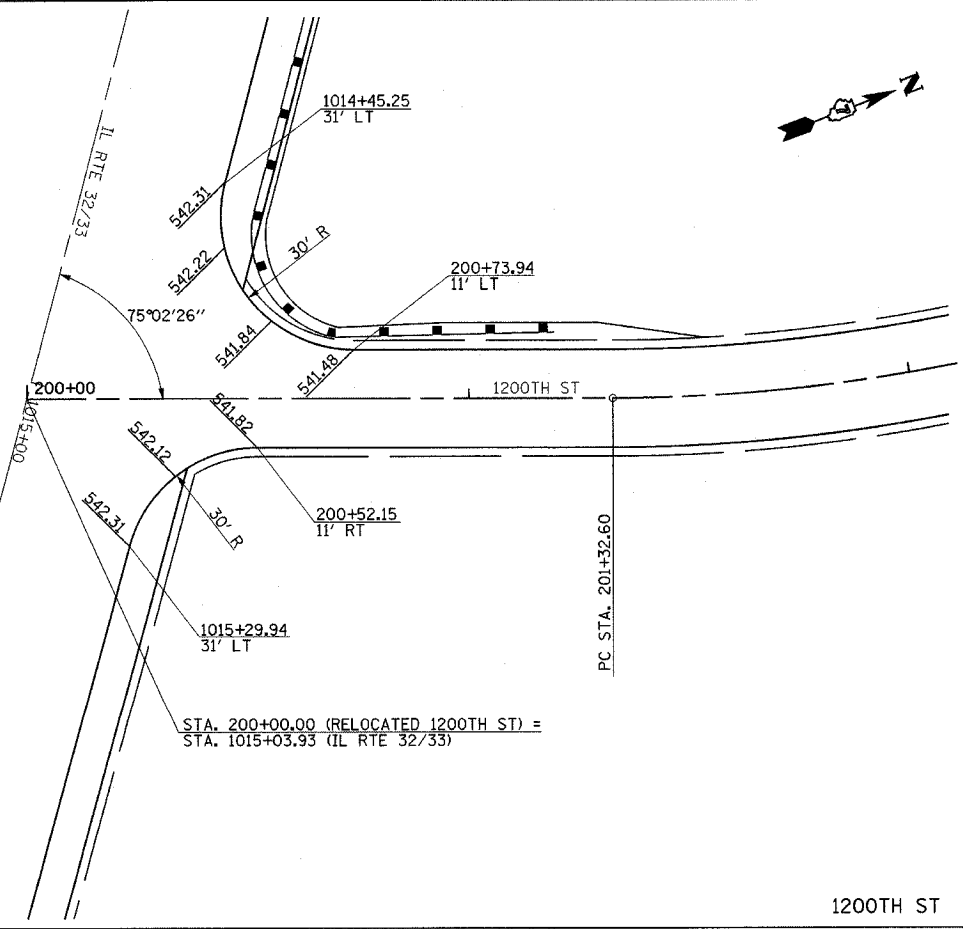
LEPRECHAUN LANE

STA. 130+00.00 (WABASH RIVER HILL RD) =
 STA. 991+35.27 (IL RTE 32/33)



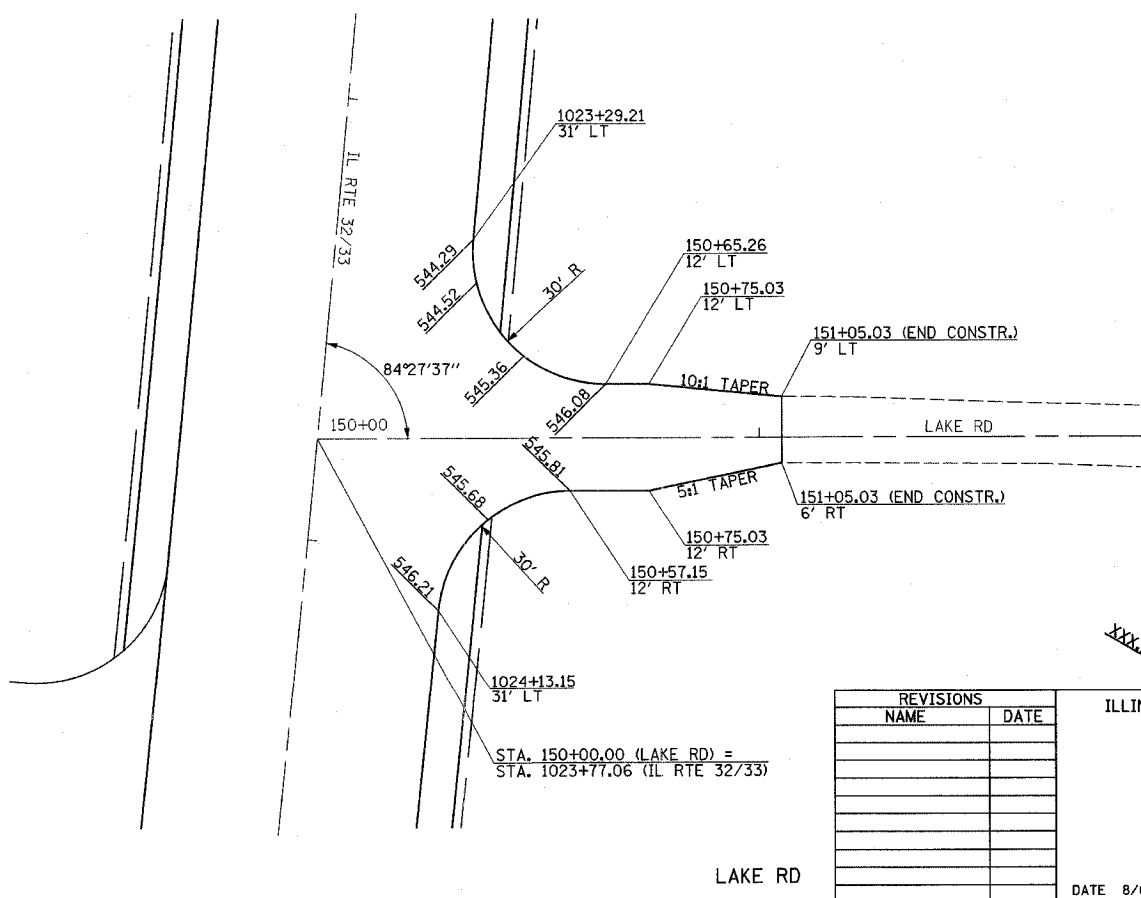
IRISH HILL & WABASH

STA. 200+00.00 (RELOCATED 1200TH ST) =
 STA. 1015+03.93 (IL RTE 32/33)



1200TH ST

STA. 150+00.00 (LAKE RD) =
 STA. 1023+77.06 (IL RTE 32/33)



LAKE RD

LEGEND
 XXXXX INDICATES PROPOSED GRADE ELEVATION
 INTERVAL AROUND CURVES IS 20'
 UNLESS NOTED

| REVISIONS | |
|-----------|------|
| NAME | DATE |
| | |
| | |
| | |
| | |
| | |
| | |
| | |
| | |
| | |
| | |

ILLINOIS DEPARTMENT OF TRANSPORTATION
 INTERSECTION GEOMETRICS
 SHEET 3 OF 5

DATE 8/02
 DRAWN BY MLO
 CHECKED BY SJK