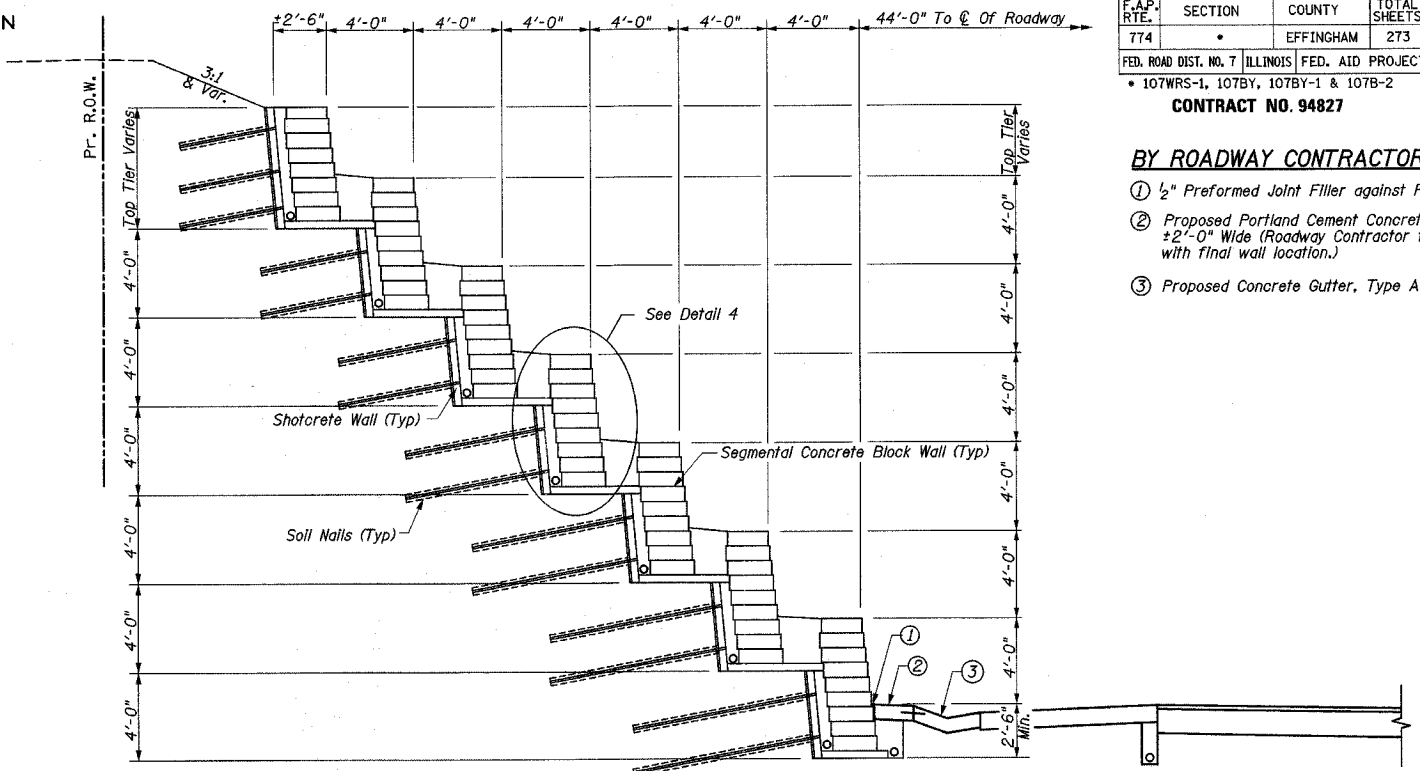
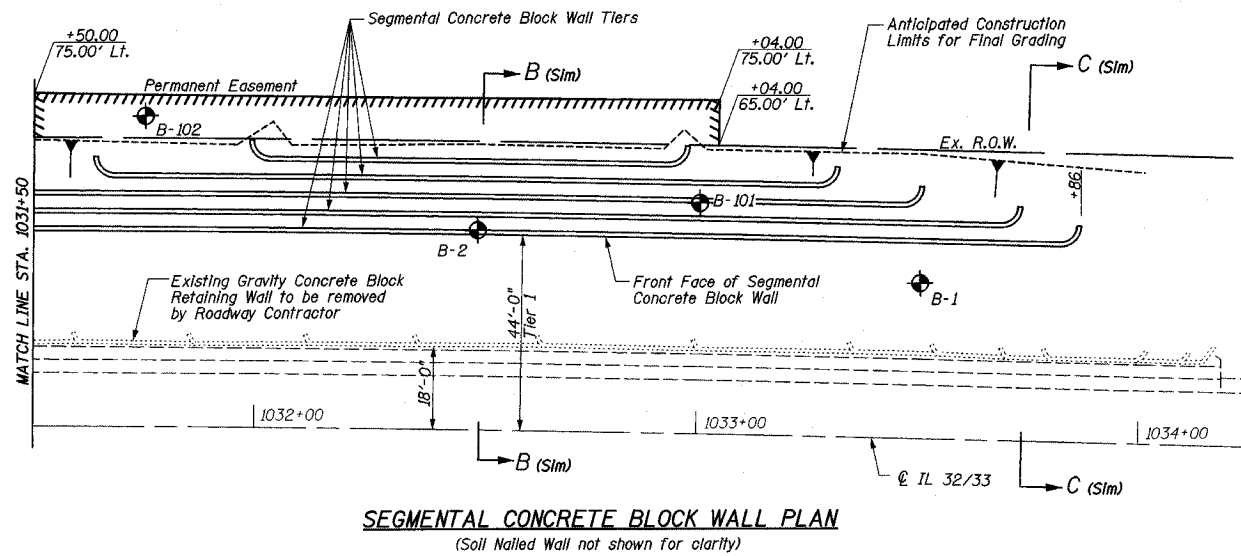
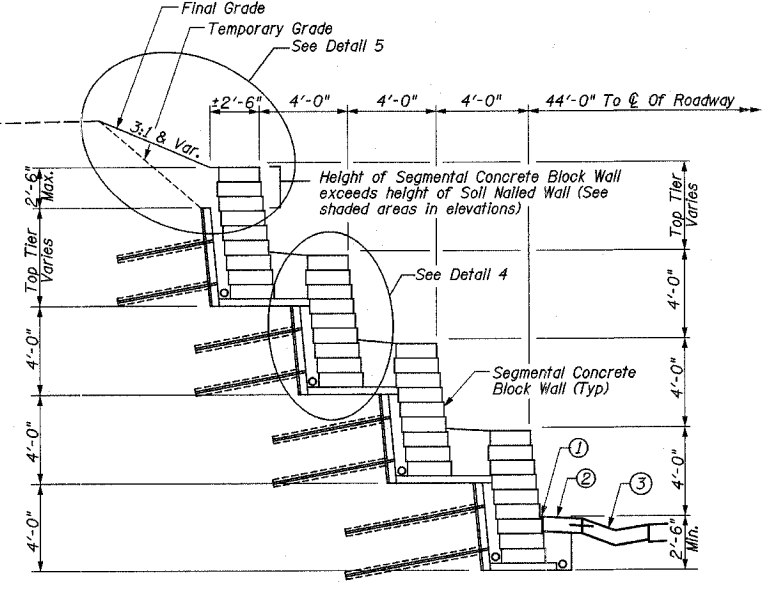
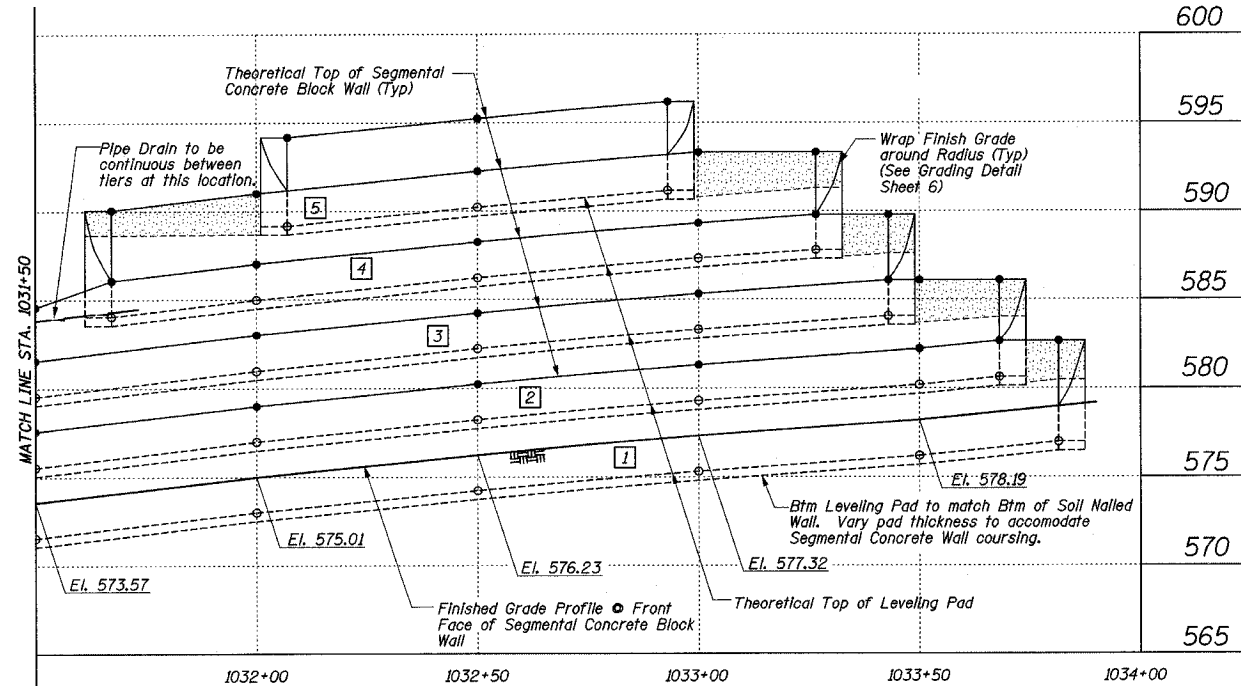


F.A.P. RTE.	SECTION	COUNTY	TOTAL SHEETS	SHEET NO.
774	*	EFFINGHAM	273	93
FED. ROAD DIST. NO. 7 ILLINOIS FED. AID PROJECT				
* 107WRS-1, 107BY, 107BY-1 & 107B-2				
CONTRACT NO. 94827				

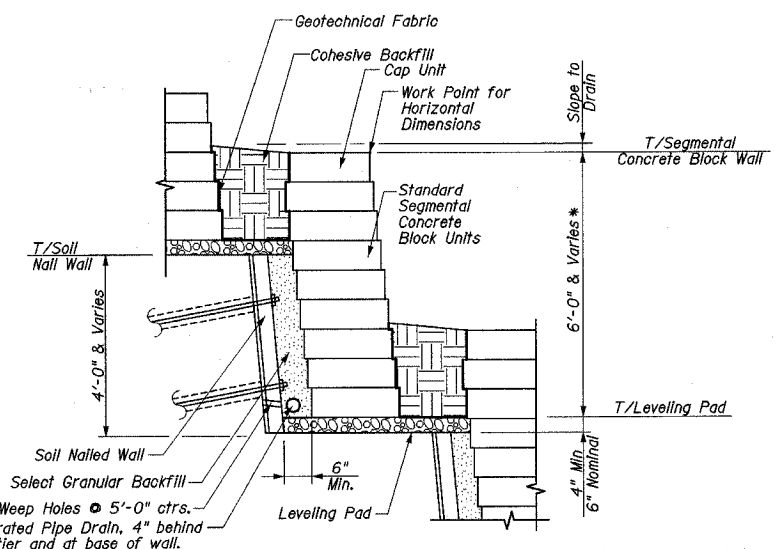
SHEET NO. 5
OF 14 SHEETS



- BY ROADWAY CONTRACTOR:**
- 1/2" Preformed Joint Filler against Retaining Wall
 - Proposed Portland Cement Concrete Shoulder, 6" ±2'-0" Wide (Roadway Contractor to coordinate width with final wall location.)
 - Proposed Concrete Gutter, Type A

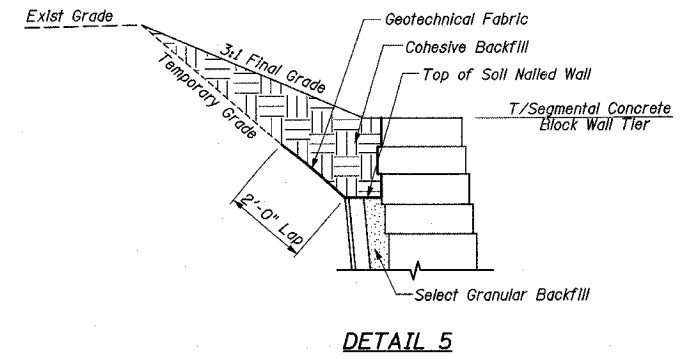


SECTION B-B
TYPICAL TIERED RETAINING WALL
(Sta. 1028+00.00 Shown, Others Similar)



DETAIL 4
Typical Segmental Concrete Block Wall Tier

* Note: Block size, batter, setback & no. of courses per Wall Supplier Design (See Special Provision)



DETAIL 5

SEGMENTAL CONCRETE BLOCK WALL
ILLINOIS ROUTE 32/33
F.A.P. ROUTE 774
SECTION 107 WRS-1, 107BY,
107BY-1 & 107B-2
EFFINGHAM COUNTY
RETAINING WALL
STA. 1026+03.00 LT. TO STA. 1033+86.00 LT.
STRUCTURE NUMBER 025-W008