

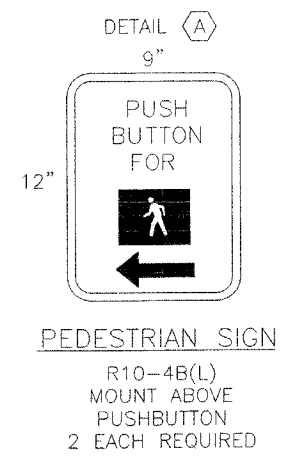
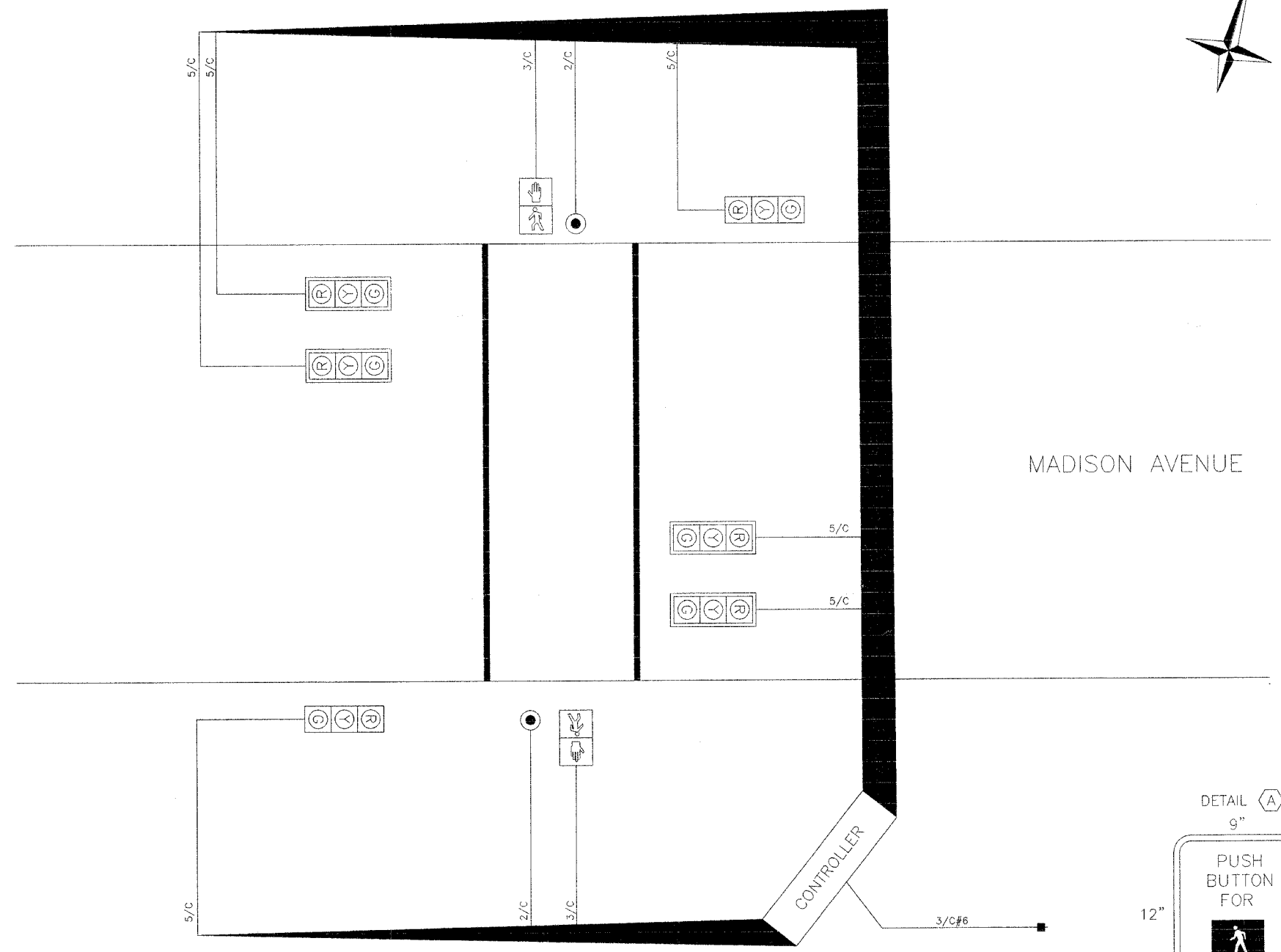
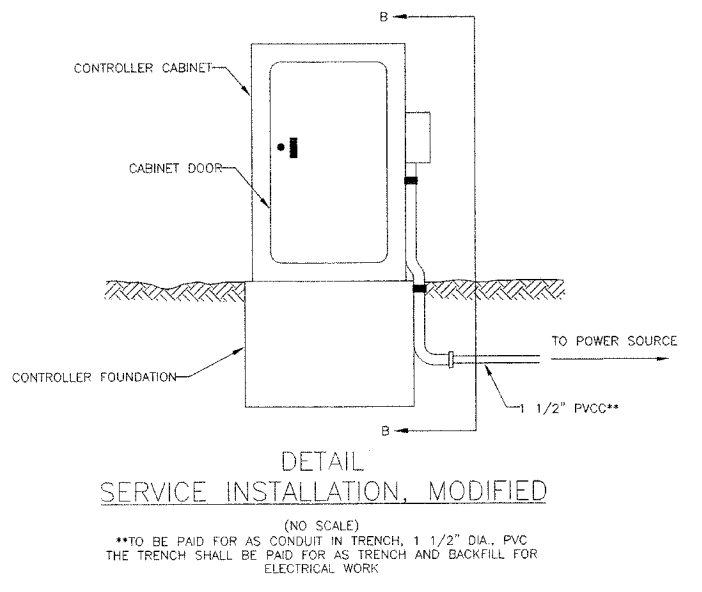
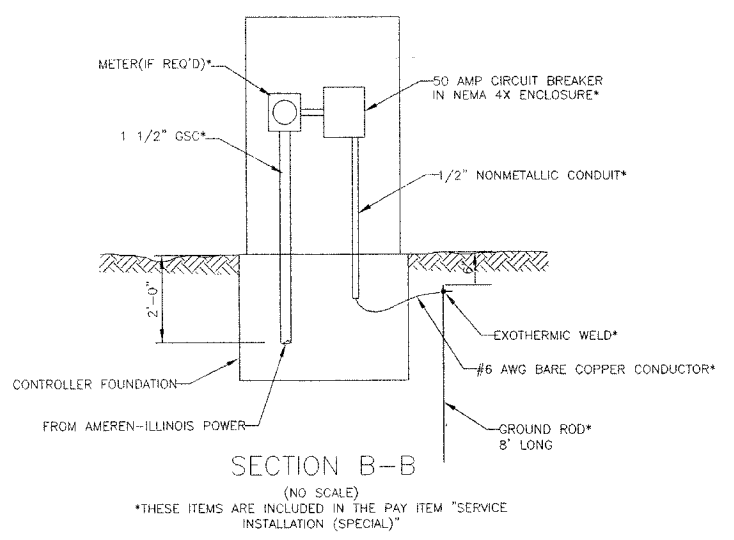
| | | | | |
|------------------------------|----------------|------------------|--------------|-----------|
| F.A.U. RTE. | SECTION | COUNTY | TOTAL SHEETS | SHEET NO. |
| 9097 | 02-00183-00-TL | MADISON | 16 | 14 |
| FED. ROAD DIST. NO. ILLINOIS | | FED. AID PROJECT | | |
| CONTRACT NO. 97243 | | | | |

SHEET NO.
14

Job No. 202-02-1
Date: 11/1/04
Scale: NONE
Drawn by: C.S.
Design by: K.W.
Approved by: D.B.B.
File Name: TS202-02

CABLE DIAGRAM LEGEND

- ELECTRIC CABLE IN CONDUIT
- 2/C INDICATES NUMBER OF CONDUCTORS IN CABLE
- SERVICE INSTALLATION
- #6 INDICATES AMERICAN WIRE GAUGE (AWG) SIZE 6 CONDUCTORS
- ⊙ TRAFFIC SIGNAL HEAD
- ⊙ TRAFFIC SIGNAL HEAD WITH BACKPLATE
- ⊙ PEDESTRIAN PUSHBUTTON DETECTOR



REVISIONS

| | | |
|--|--|--|
| | | |
| | | |
| | | |
| | | |
| | | |
| | | |

CBB Crawford Bunte Brammeier
Traffic and Transportation Engineers
St. Louis, Missouri / Glen Carbon, Illinois
314-878-6644 618-656-2612
Fax: 314-878-5876 E-Mail: cbb@cbtraffic.com

CABLE DIAGRAM
MADISON AVENUE &
GRANITE CITY HIGH SCHOOL
GRANITE CITY, ILLINOIS