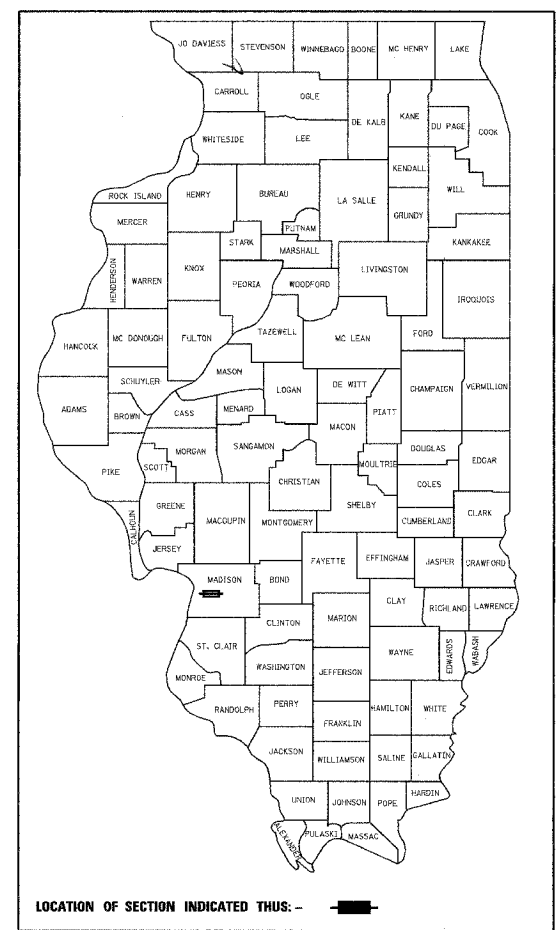


F.A. RTE.	SECTION	COUNTY	TOTAL SHEETS	SHEET NO.
9097	02-00051-00-RS	MADISON	56	1
FED. ROAD DIST. NO.		ILLINOIS FED. AID PROJECT		

CONTRACT NO. 97244

STATE OF ILLINOIS
DEPARTMENT OF TRANSPORTATION
DIVISION OF HIGHWAYS
PLANS FOR PROPOSED
ROADWAY IMPROVEMENT
CITY OF MADISON
F.A.U. ROUTE 9097 (MADISON AVENUE)
SECTION NO. 02-00051-00-RS
PROJECT NO. M-5011 (179)
MADISON COUNTY
JOB NO. C-98-351-04

FOR INDEX OF SHEETS, SEE SHEET NO. 2



SCALES
 PLAN 1" = 20'
 PROFILE HORIZ. 1" = 20'
 PROFILE VERT. 1" = 5'
 CROSS SECTIONS 1" = 10' HORIZ.
 1" = 5' VERT.

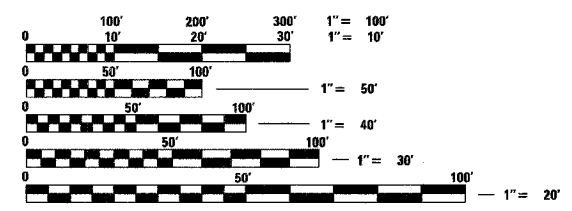
**BEGIN PROJECT
STATION 100 + 65.24**



**END PROJECT
STATION 149 + 81.38**

**BEGIN OMISSION
STATION 147 + 68.57**

**END OMISSION
STATION 147 + 78.71**



FULL SIZE PLANS HAVE BEEN PREPARED USING STANDARD ENGINEERING SCALES, REDUCED SIZED PLANS WILL NOT CONFORM TO STANDARD SCALES, IN MAKING MEASUREMENTS ON REDUCED PLANS, THE ABOVE SCALES MAY BE USED.

J.U.L.I.E.
JOINT UTILITY LOCATION INFORMATION FOR EXCAVATION
1-800-892-0123

DESIGN DESIGNATION
FUNCTIONAL CLASSIFICATION: MINOR ARTERIAL
ADT: 10000 (2005) 12000 (2025)
DHV (2025): 1080
DESIGN SPEED: 30 MPH

CONTRACT NO. 97244

LOCATION MAP

SCALE: 1" = 750'

GROSS LENGTH OF PROJECT: 4916.14 LIN. FT. = 0.931 MILES
 OMISSION LENGTH: 10.14 LIN. FT. = 0.002 MILES
 NET LENGTH OF PROJECT: 4906.00 LIN. FT. = 0.929 MILES
 SECTIONS 24 & 25, T. 3 N., R. 10 W., 3RD P.M.



Expires 11-30-05

Brian F. Kulick 12/17/04
 BRIAN F. KULICK, P.E. No. 49936 DATE
 (Printed by Authority of the State of Illinois)
 Job No. 031013

STATE OF ILLINOIS
DEPARTMENT OF TRANSPORTATION
DIVISION OF HIGHWAYS

APPROVED 12/17/04 20
LOCAL AGENCY OFFICIAL

PASSED Jan 5 2005

APPROVED Jan 5 2005
MARY C. LAMIE, P.E.
DEPUTY DIRECTOR OF HIGHWAYS
REGION FIVE ENGINEER

Juneau Associates, Inc. P.C.
 CONSULTING ENGINEERS AND LAND SURVEYORS
 2100 State Street, P.O. Box 1325
 Granite City, Illinois 62040
 Phone: (618) 877-1400 / (618) 452-5535
 Fax: (618) 452-5541

100 North Research Drive
 Edwardsville, Illinois 62025
 Phone: (618) 659-0900 / (618) 659-0800
 Fax: (618) 659-0941