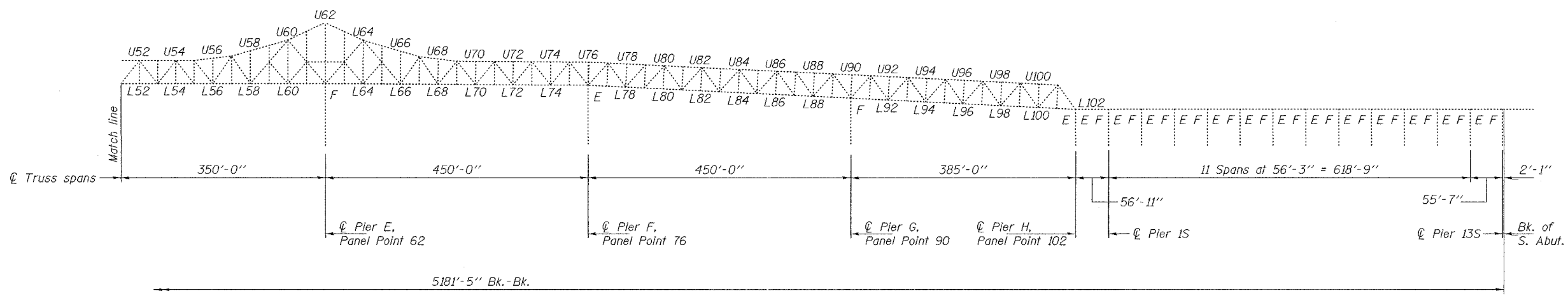


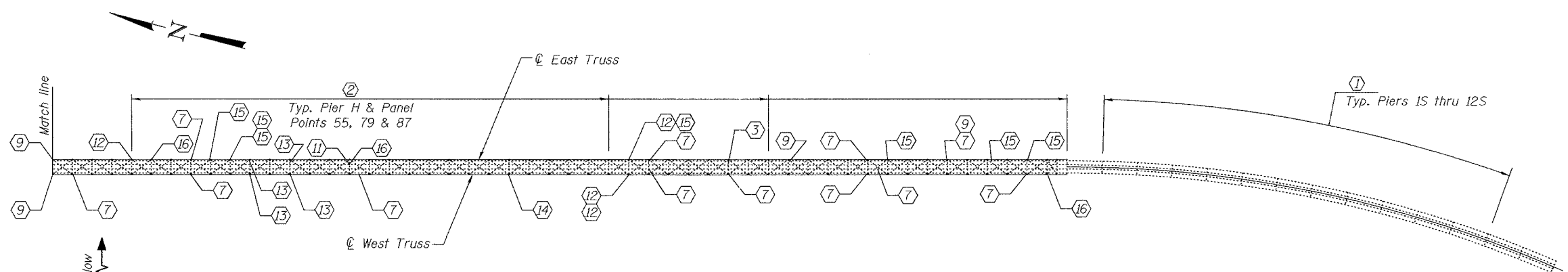
STATE OF ILLINOIS  
DEPARTMENT OF TRANSPORTATION

ROUTE NO. FAS 944	SECTION *	COUNTY ALEXANDER	STATE SHEETS 6	SHEET NO. 3
FED. ROAD DIST. NO. 7	ILLINOIS	FED. AID PROJECT	13 SHEETS	
* (138D-BR)1-5			Contract No. 98640	



MISSOURI APPROACH

PARTIAL ELEVATION



PARTIAL PLAN

- ① - Replace existing 2 1/2" PJS with 1 3/4" Silicone Joint Sealer. See sheet 5 of 13.
- ② - Replace existing Silicone Joint Sealer with Neoprene Expansion Joints, 6 1/2". See sheets 4 thru 6 of 13.
- ③ - Bottom flange repair. See sheet 10 of 13.
- ④ - Remove broken rivets & replace with HS Bolts. See notes, sheet 11 of 13.
- ⑤ - Replace missing bolts with new HS Bolts. See notes, sheet 11 of 13.
- ⑥ - Lower chord repair. See sheet 9 of 13.
- ⑦ - Stringer/girder web repair. See sheets 7 & 8 of 13.
- ⑧ - Remove & replace stringer connector angle. See sheet 10 of 13.
- ⑨ - Floorbeam web repair. See sheets 8 & 9 of 13.
- ⑩ - Remove & replace safety loop. See sheet 11 of 13.
- ⑪ - Remove & replace horizontal strut. See sheet 11 of 13.
- ⑫ - Weld repair. See sheet 12 of 13.
- ⑬ - Fill plate repair. See sheet 12 of 13.
- ⑭ - Remove & replace gusset plate. See sheet 12 of 13.
- ⑮ - Grind. See sheet 13 of 13.
- ⑯ - Straighten member & grind. See sheet 13 of 13.

DESIGNED	DAB
CHECKED	JSB
DRAWN	baliva
CHECKED	DAB JSB

MARCH 11, 2005  
 EXAMINED *John A. Morris*  
 ENGINEER OF STRUCTURAL SERVICES  
 PASSED *Ralph E. Anderson*  
 ENGINEER OF BRIDGES AND STRUCTURES

BRIDGE REPAIRS  
 OLD CAIRO BRIDGE OVER MISSISSIPPI RIVER  
 FAS RTE. 944 (US 60 & 62)  
 SEC. (138D-BR)1-5  
 ALEXANDER COUNTY  
 SN 002-0005