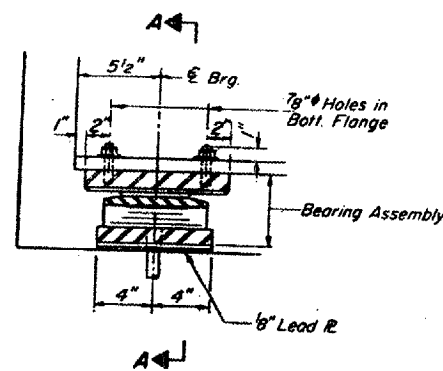
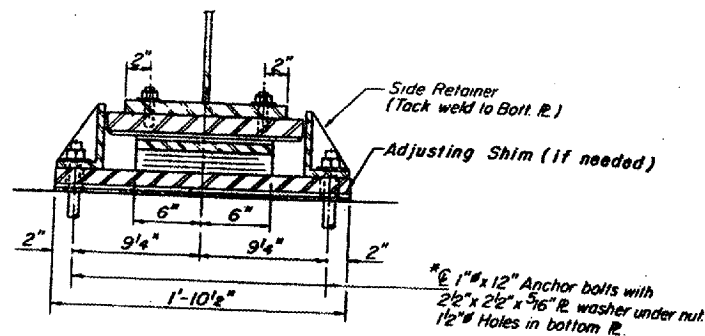


Sec. 129 BC

Sheet 11 of 16

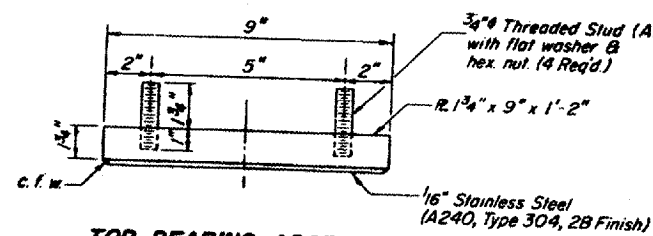


SECTION AT ABUT.

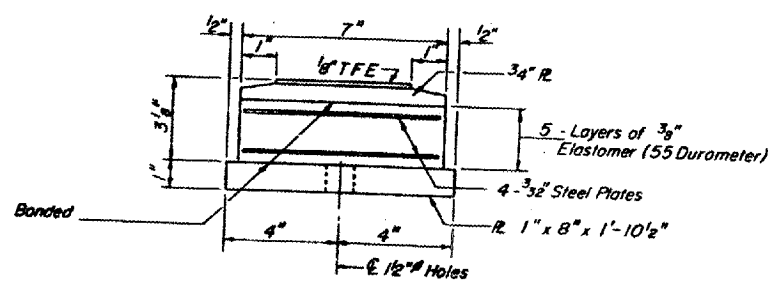


SECTION A-A

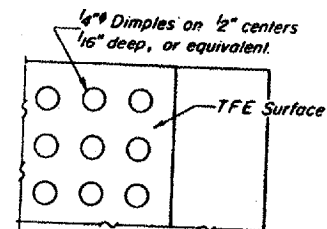
**TYPE II TFE ELASTOMERIC EXP BRG.**  
 (AT EAST ABUTMENT 5 REQ'D.)



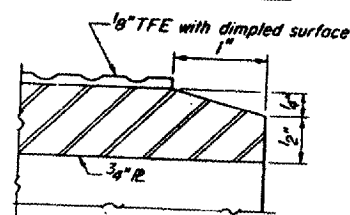
TOP BEARING ASSEMBLY



BOTTOM BEARING ASSEMBLY



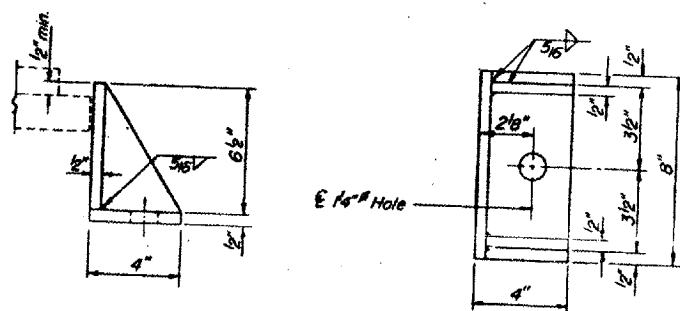
PLAN-TFE SURFACE



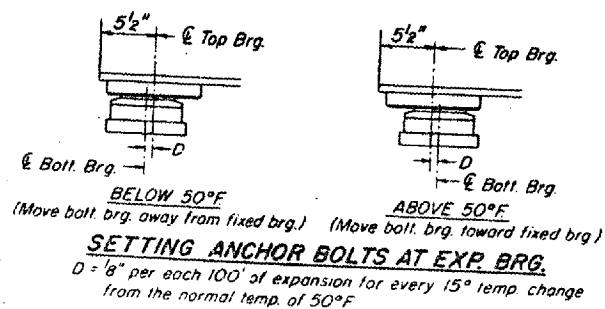
SECTION THRU TFE

\*Note: After girders have been erected holes of expansion bearings shall be drilled and anchor bolts grouted in place. Anchor bolts at fixed bearings may be built into the masonry.

Note: The 1/8" TFE sheet shall be bonded directly to the top steel plate with a two-component, medium viscosity epoxy resin, conforming to the requirements of the Federal Specification MMM-A-134, Type I. The bond agent shall be applied on the full area of the contact surfaces. Bonding of 1/8" TFE sheet during vulcanizing process will be permitted provided the process and method of adjusting assembly height is approved by the Engineer.



SIDE RETAINER



**SETTING ANCHOR BOLTS AT EXP. BRG.**  
 D = 1/8" per each 100' of expansion for every 15° temp. change from the normal temp. of 50°F

FOR INFORMATION ONLY:

BRIDGE NO. 2 STRUCTURE 100-0033

TYPE II ELASTOMERIC EXP BRG.  
 FEDERAL AID PRIMARY RT 726 (ILL. 148)  
 SECTION 129-BC-BR-1  
 OVER POND CREEK  
 WILLIAMSON COUNTY  
 STATION 222+8000