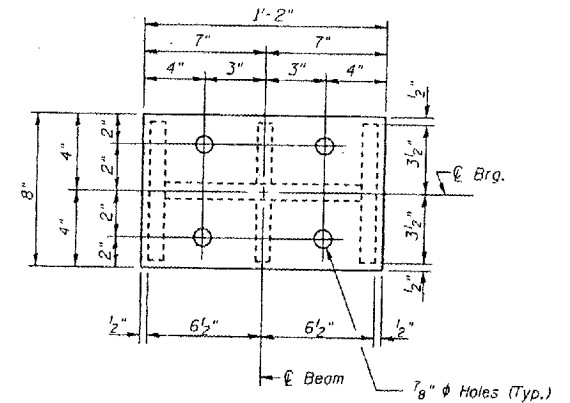
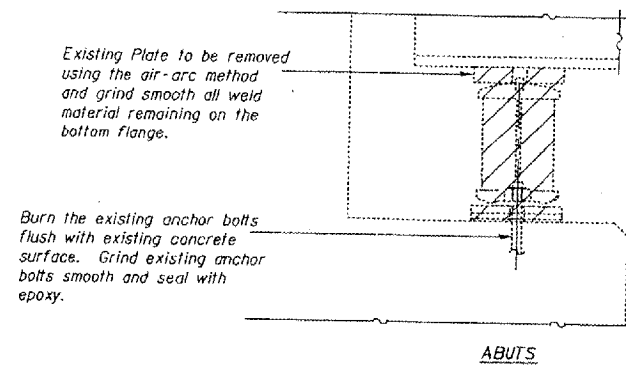
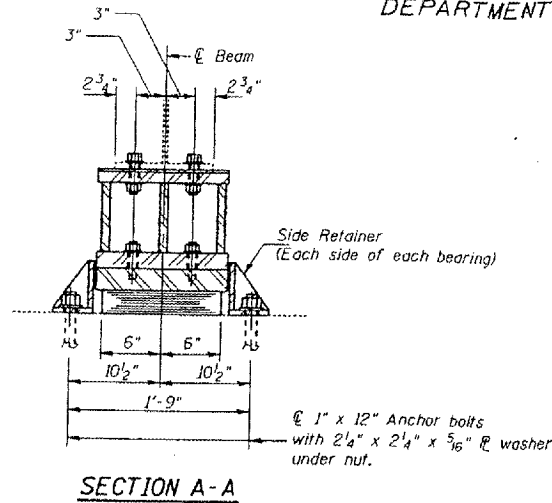
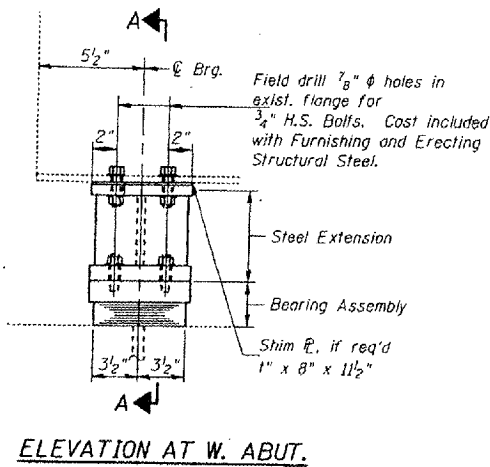


STATE OF ILLINOIS  
 DEPARTMENT OF TRANSPORTATION

DATE	SECTION	UNIT	DEPT.	NO.	SHEET NO.
F.A.I. 24		MASSAC	234	159	
PER. ROAD DIST. NO.	ALIGNED	PER. AND PROPERTY			SHEETS

# 6411.2-1.3-L3RS-1 BSMART FY2002-2



ELEVATION AT W. ABUT.

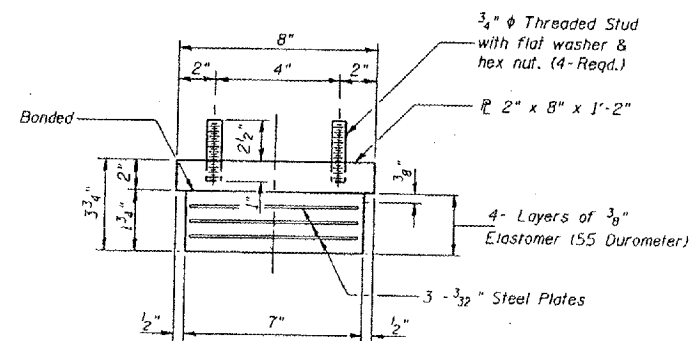
SECTION A-A

EXISTING BEARING REMOVAL DETAIL  
 Cost is included with Jack and Remove Existing Bearings

PLAN-TOP & BOTTOM PLATE

TYPE I ELASTOMERIC EXP. BRG.

Notes: See sheet 172 for Anchor Bolt installation.

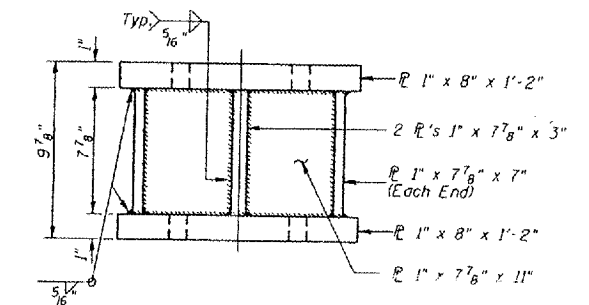


BEARING ASSEMBLY

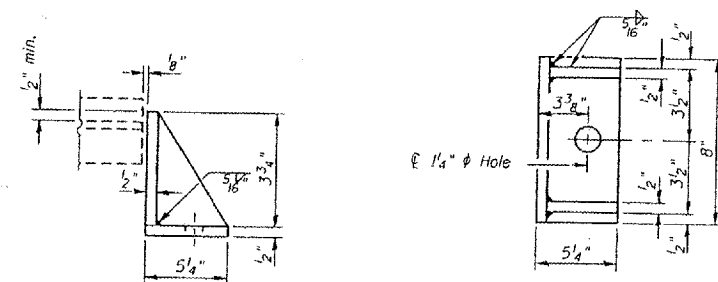
Note: Shim plates shall not be placed under Bearing Assembly.

GIRDER REACTIONS

R <sub>P</sub>	(K)	22.60
R <sub>L</sub>	(K)	37.30
Imp.	(K)	11.19
R (Total)	(K)	71.09



STEEL EXTENSION AT WEST ABUT.



SIDE RETAINER

Equivalent rolled angle with stiffeners will be allowed in lieu of welded plates. Weight included with Furnishing and Erecting Structural Steel.

Notes:

Prior to ordering any material, the Contractor shall verify in the field all bearing height and shim thickness dimensions. The minimum jack capacity required is 35 Tons.  
 New steel extensions, side retainers, connection bolts, any shim and anchor bolts are included in "Furnishing and Erecting Structural Steel".  
 Hatched areas indicate Jack and Remove Existing Bearings.  
 Existing plate beam removal and new plate beam erection shall be coordinated with drilling holes in bottom flange for bearing attachment, if necessary, to provide clearance for the drill.

BILL OF MATERIAL

Item	Unit	Total
Elastomeric Bearing Assembly Type I	Each	6
Jack and Remove Existing Bearings	Each	6

WEST ABUTMENT

FOR INFORMATION ONLY:

BRIDGE NO. 1 STRUCTURE 064-0020

DESIGNED:	CMW
CHECKED:	TWH
DRAWN:	CMW
CHECKED:	TWH