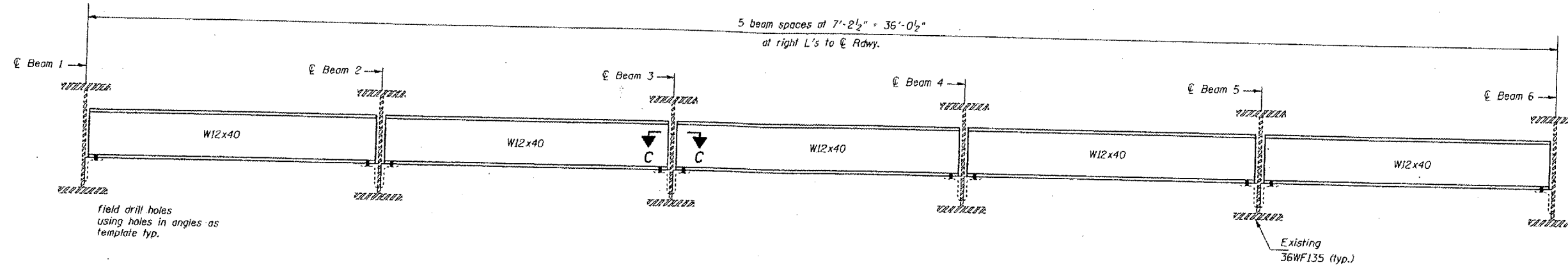


STATE OF ILLINOIS
DEPARTMENT OF TRANSPORTATION

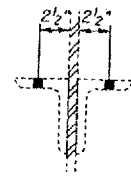
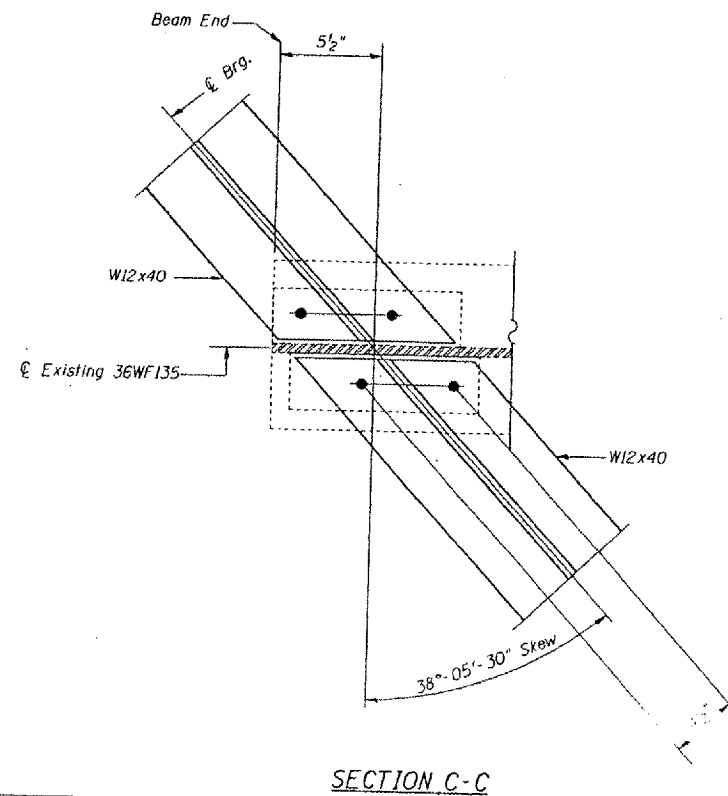
SCALE	DATE	BY	CHECKED	NO.	SHEET NO.
F.A.I. 24		MASSAC	234	166	SHEETS

* 6412.2-1.3-1.31RS-1 BSMARY FY2002-2



DIAPHRAGM REPLACEMENT AT ABUTMENTS

Required: 10 - W12 x 40 x 9'-0" long



CLIP ANGLES

DESIGNED:	CMW
CHECKED:	TWH
DRAWN:	CMW
CHECKED:	TWH

Note: 5/8" ϕ Holes for new 3/4" H.S. Bolts shall be used for all diaphragm connections. Two hardened washers shall be required at diaphragm connections. Existing clip angles are welded to the webs and are to be reused.

FOR INFORMATION ONLY:

BRIDGE NO. 2 STRUCTURE 064-0021