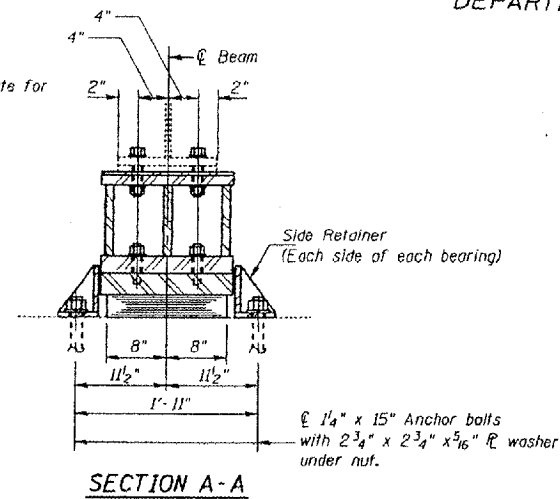
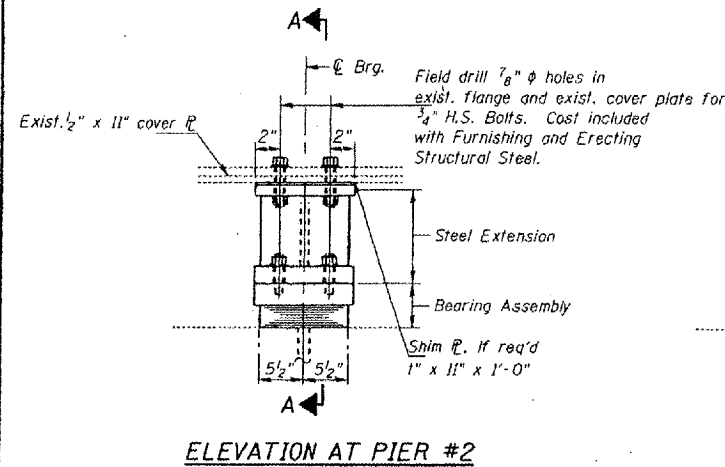


STATE OF ILLINOIS
 DEPARTMENT OF TRANSPORTATION

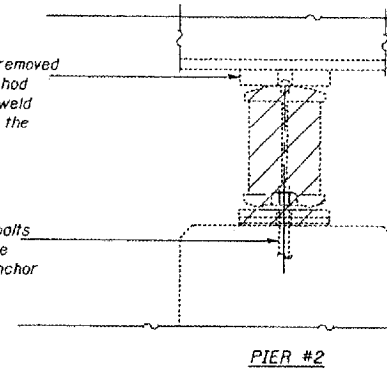
PROJECT NO.	SECTION	DISTRICT	SHEET NO.	TOTAL SHEETS
F.A.I. 24		MASSAC	234	169
SHEETS				

5411.2.2-1.3-1.31RS-1 BSMART F72002-2



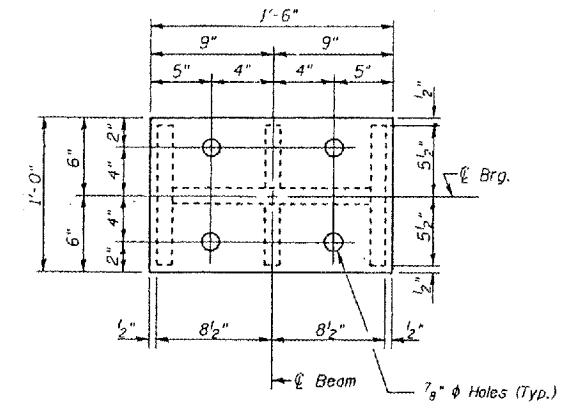
Existing Plate to be removed using the air-arc method and grind smooth all weld material remaining on the bottom flange.

Burn the existing anchor bolts flush with existing concrete surface. Grind existing anchor bolts smooth and seal with epoxy.



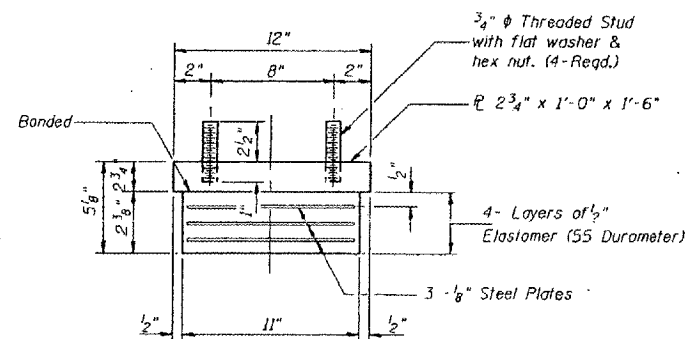
EXISTING BEARING REMOVAL DETAILS

Cost is included with Jack and Remove Existing Bearings



TYPE I ELASTOMERIC EXP. BRG.

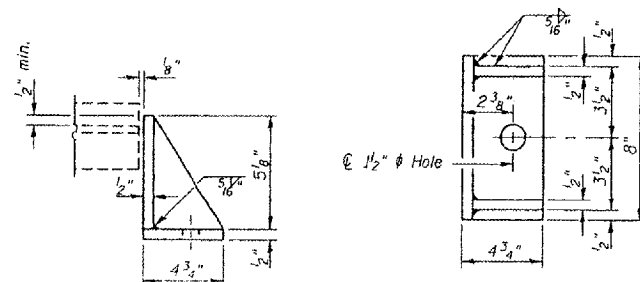
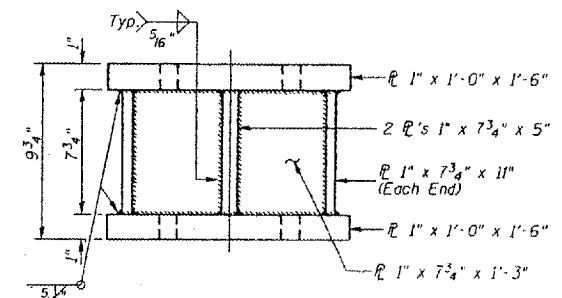
Notes: See sheet 172 for Anchor Bolt installation.



Note: Shim plates shall not be placed under Bearing Assembly.

GIRDER REACTIONS

R _P	(K)	81.10
R _L	(K)	48.60
Imp.	(K)	14.58
R (Total)	(K)	144.28



Equivalent rolled angle with stiffeners will be allowed in lieu of welded plates. Weight included with Furnishing and Erecting Structural Steel.

DESIGNED:	CMW
CHECKED:	TWH
DRAWN:	CMW
CHECKED:	TWH

BILL OF MATERIAL

Item	Unit	Total
Elastomeric Bearing Assembly Type I	Each	6
Jack and Remove Existing Bearings	Each	6

Notes:
 Prior to ordering any material, the Contractor shall verify in the field all bearing height and shim thickness dimensions. The minimum jack capacity required is 85 Tons.
 New steel extensions, side retainers, connection bolts, any shim and anchor bolts are included in "Furnishing and Erecting Structural Steel".

FOR INFORMATION ONLY:

BRIDGE NO. 2 STRUCTURE 064-0021