

No.	Drawing Issue	Description	Date	By

Date
MARCH 25, 2005
Sheet Title

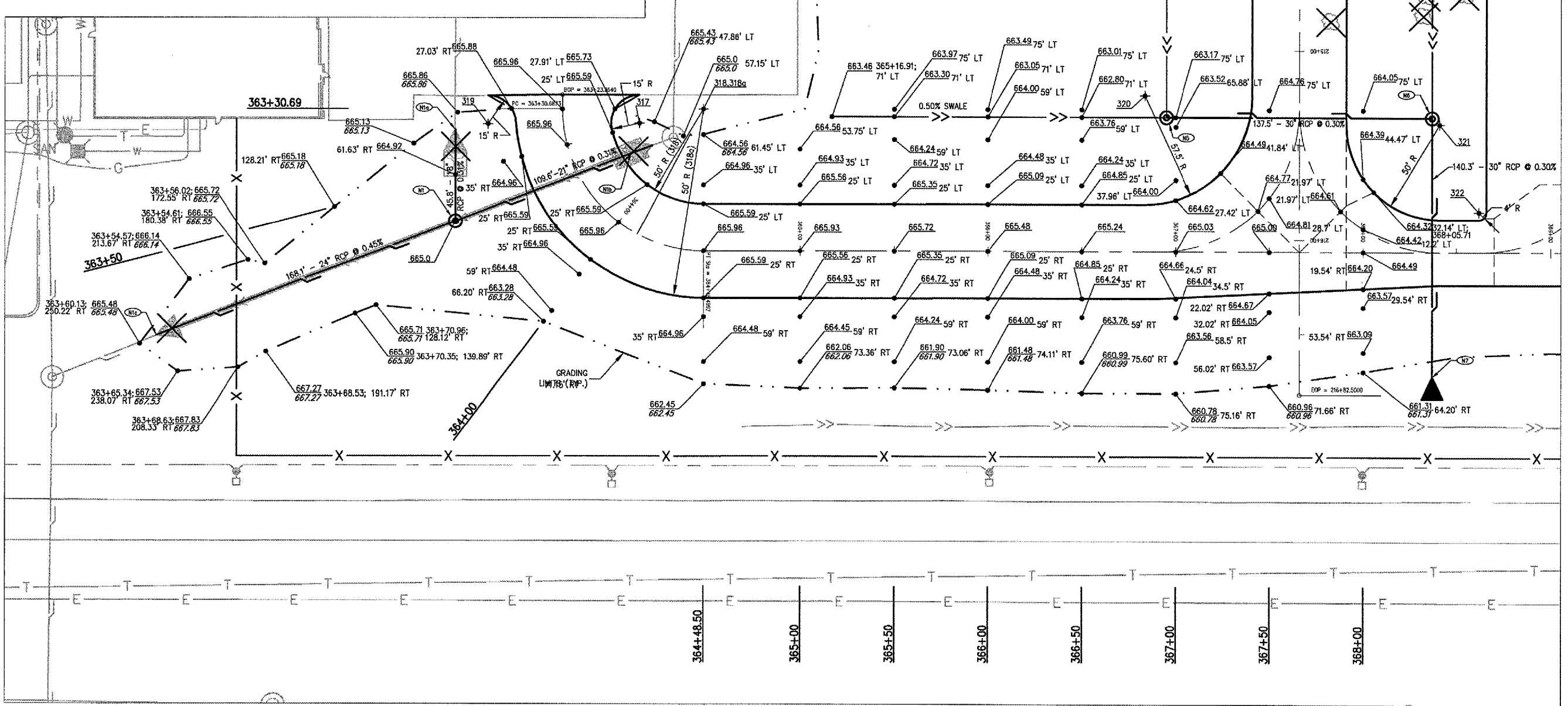
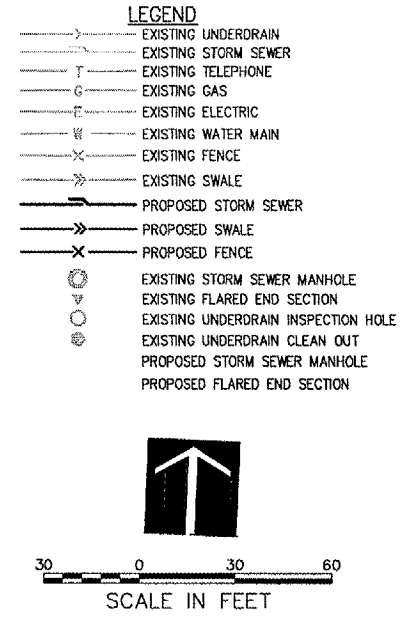
**STAKING PLAN
ALIGNMENT 300
STA 363+23.35 TO
STA 368+00**

840-04D8041
Project Number
LDH 02/14/05
Layout By Date
LDH/TMM 02/14/05
Designed By Date
RMH 03/11/05
Reviewed By Date
LDH | KLK
Drawn By Sheet No.

NOTE:
FOR STAKING NOTES, SEE SHEET 23.

CURVE DATA

CURVE #	CENTER	P.C.	P.T.
317	363+47.14 40.00' LT (15' RADIUS)	363+23.35 40.84' LT EL = 665.88	363+47.14 25.00' LT EL = 665.59
318	364+48.50 75.00' LT (50' RADIUS)	363+47.14 25.00' LT EL = 665.59	364+48.50 25.00' LT EL = 665.59
318a	363+89.59 75.00' LT (100' RADIUS)	363+35.91 25.00' RT EL = 665.59	364+48.50 25.00' RT EL = 665.59
319	363+35.91 40.00' RT (15' RADIUS)	363+23.68 39.72' RT EL = 666.03	363+35.91 25.00' RT EL = 665.59
320	366+83.50 82.50' LT (57.5' RADIUS)	366+83.50 25.00' LT EL = 664.71	367+41.00 82.50' LT EL = 664.63
321	368+41.00 67.50' LT (50' RADIUS)	367+91.00 67.50' LT EL = 664.63	368+41.00 17.50' LT EL = 663.72
322	368+62.00 21.50' LT (4' RADIUS)	368+62.00 17.50' LT EL = 663.72	368+66.00 21.50' LT EL = 663.72



A:\04\005\008\01\040001\DRAWINGS\SHEETS\26-STAKING\PLAN\05 MAR 28, 2005 12:14PM.TMM