

NOTE:
FOR STAKING NOTES, SEE SHEET 23.

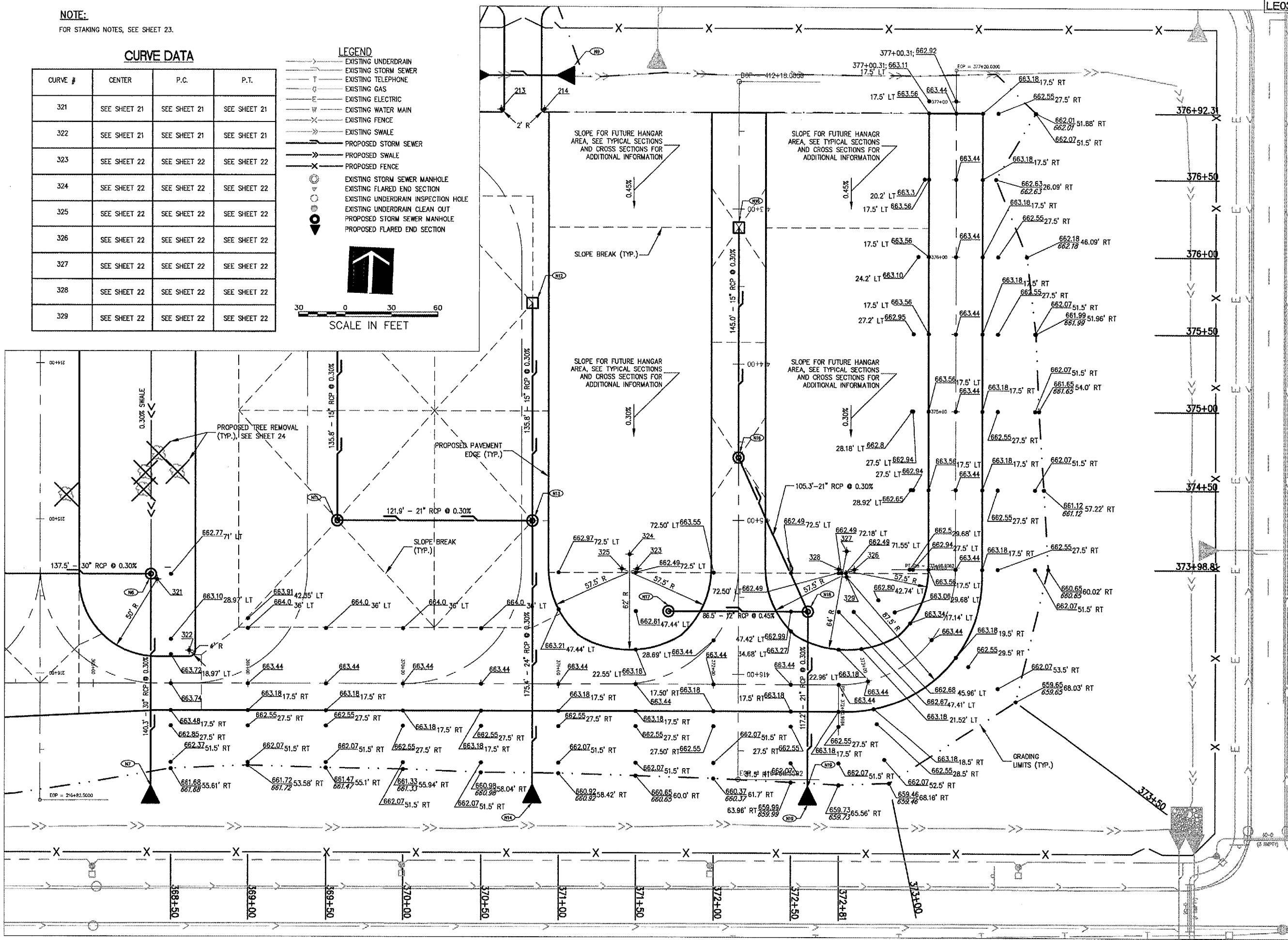
CURVE DATA

CURVE #	CENTER	P.C.	P.T.
321	SEE SHEET 21	SEE SHEET 21	SEE SHEET 21
322	SEE SHEET 21	SEE SHEET 21	SEE SHEET 21
323	SEE SHEET 22	SEE SHEET 22	SEE SHEET 22
324	SEE SHEET 22	SEE SHEET 22	SEE SHEET 22
325	SEE SHEET 22	SEE SHEET 22	SEE SHEET 22
326	SEE SHEET 22	SEE SHEET 22	SEE SHEET 22
327	SEE SHEET 22	SEE SHEET 22	SEE SHEET 22
328	SEE SHEET 22	SEE SHEET 22	SEE SHEET 22
329	SEE SHEET 22	SEE SHEET 22	SEE SHEET 22

LEGEND

- EXISTING UNDERDRAIN
- EXISTING STORM SEWER
- EXISTING TELEPHONE
- EXISTING GAS
- EXISTING ELECTRIC
- EXISTING WATER MAIN
- EXISTING FENCE
- EXISTING SWALE
- PROPOSED STORM SEWER
- PROPOSED SWALE
- PROPOSED FENCE
- EXISTING STORM SEWER MANHOLE
- EXISTING FLARED END SECTION
- EXISTING UNDERDRAIN INSPECTION HOLE
- EXISTING UNDERDRAIN CLEAN OUT
- PROPOSED STORM SEWER MANHOLE
- PROPOSED FLARED END SECTION

SCALE IN FEET



HANSON PROFESSIONAL SERVICES INC.
815 Commerce Drive, Suite 200
Oak Brook, Illinois 60523
Telephone: 630.990.3800
Fax: 630.990.3801



JOLIET REGIONAL PORT DISTRICT
1 Hangar Road
Romeoville, Illinois 60446
Telephone: 815.838.9497
Fax: 815.838.9524

**EXTEND TAXIWAY E CONSTRUCT
GA APRON, AVGAS FUELING APRON
AND AUTO PARK 100**

**AIP PROJECT NO. 3-17-0140-B38
IDA PROJECT NO. LOT-3441**

No.	Drawing Issue Description	Date	By

Date: **MARCH 25, 2005**
Sheet Title:

**STAKING PLAN
ALIGNMENT 300
STA 368+00 TO STA
377+14.85**

840-04D8041
Project Number
LDH 02/14/05
Layout By Date
LDH/TMM 02/14/05
Designed By Date
RMH 03/11/05
Reviewed By Date
LDH | KLK | ---
Drawn By Sheet No.

E:\104\2005\100840\104D8041\DRAWINGS\SHEETS\27-STAKING PLAN\LDG MAR 28, 2005 12:14PM TMM