



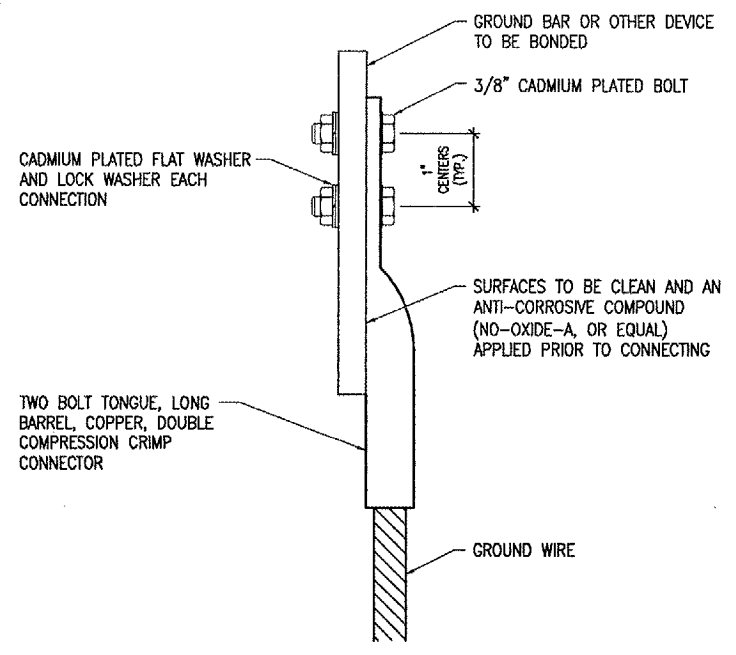
HANSON PROFESSIONAL SERVICES INC.  
 815 Commerce Drive, Suite 200  
 Oak Brook, Illinois 60523  
 Telephone: 630.990.3800  
 Fax: 630.990.3801



JOLIET REGIONAL PORT DISTRICT  
 1 Hangar Road  
 Romeoville, Illinois 60446  
 Telephone: 815.838.9497  
 Fax: 815.838.9524

EXTEND TAXWAY E; CONSTRUCT  
 GA APRON, AVGAS FUELING APRON  
 AND AUTO PARK 100

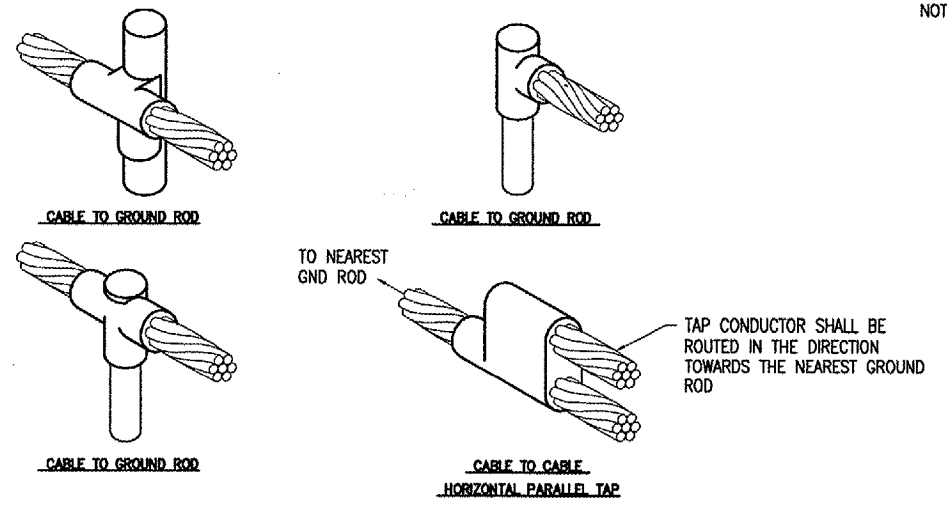
AIP PROJECT NO. 3-17-0140-B38  
 IDA PROJECT NO. LOT-3441



WIRE SIZE	BURNDY CAT. NO.	THOMAS & BETTS CAT. NO.
#8 AWG STRANDED	YA8C-2TC38	256-30695-1157
#6 AWG STRANDED	YA6C-2TC38	256-30695-1158
#2 AWG STRANDED	YA2C-2TC38	256-30695-1160
#1/0 AWG STRANDED	YA25-2TC38	256-30695-1162
#2/0 AWG STRANDED	YA26-2TC38	256-30695-1116
#3/0 AWG STRANDED	YA27-2TC38	54816BE

- NOTES**
- ALL CONNECTIONS TO GROUND BUS BAR SHALL BE WITH 2 HOLE TONGUE LONG BARREL COMPRESSION LUGS BOLTED TO THE BUS BAR.
  - GROUND WIRE CONNECTIONS TO EQUIPMENT SHALL BE WITH 2 HOLE TONGUE LONG BARREL COMPRESSION LUGS BOLTED TO THE DEVICE OR WITH THE RESPECTIVE EQUIPT MANUFACTURER'S LUG OR TERMINAL WHERE APPLICABLE.
  - GROUNDING ELECTRODE CONDUCTORS, BONDING JUMPERS, & INDIVIDUAL GROUND WIRES SHALL NOT BE INSTALLED IN METAL CONDUIT.
  - ALL CONNECTIONS SHALL BE COATED WITH A CORROSION PREVENTATIVE COMPOUND (NO-OXIDE-A, OR EQUAL) BEFORE JOINING. ALL COPPER BUS BARS SHALL BE CLEANED PRIOR TO MAKING CONNECTIONS TO REMOVE SURFACE OXIDATION. CLEAN SURFACES, OF RESPECTIVE DEVICES TO BE BONDED, TO BARE METAL, PER NEC 250-12.

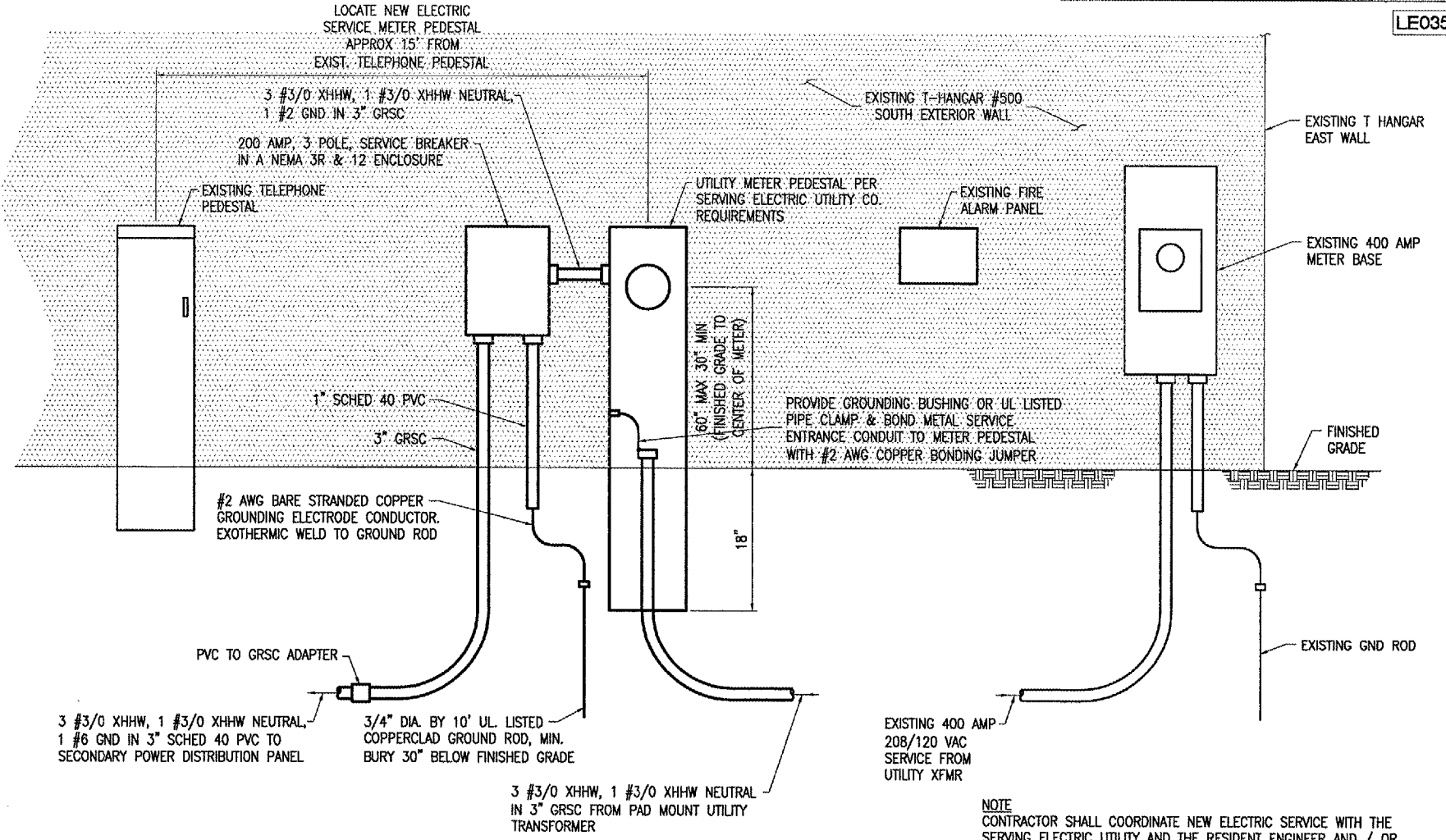
**GROUNDING LUG CONNECTION DETAIL**



**DETAIL NOTES**

- EXOTHERMIC WELDS SHALL BE CADWELD AS MANUFACTURED BY ERICO PRODUCTS, SOLON, OHIO OR THERMOWELD AS MANUFACTURED BY CONTINENTAL INDUSTRIES, TULSA, OKLAHOMA. VERIFY PROPER SIZES, TYPES, AND REQUIREMENTS FOR THE RESPECTIVE APPLICATION WITH THE MANUFACTURER, AND INSTALL PER THEIR DIRECTIONS.
- FOR APPLICATIONS TO METAL SURFACES THAT ARE LESS THAN 3/16" THICK CONTACT THE EXOTHERMIC WELD MANUFACTURER FOR DIRECTION AND INSTRUCTION ON EXOTHERMIC WELD INSTALLATION TO THE RESPECTIVE SURFACE.
- FOR APPLICATIONS TO GALVANIZED STEEL OR PAINTED STEEL, REMOVE GALVANIZING AND/OR PAINT & CLEAN THE SURFACE TO EXPOSE BARE STEEL BEFORE MAKING EXOTHERMIC WELD CONNECTION.
- INDIVIDUAL GROUNDING ELECTRODE CONDUCTORS SHALL NOT BE INSTALLED IN METAL CONDUIT. INSTALL GROUNDING ELECTRODE CONDUCTORS IN SCHED 40 PVC CONDUIT AS REQUIRED IN FOUNDATIONS, FOR PROTECTION, WHERE ENTERING ENCLOSURES, ETC.

**EXOTHERMIC WELD DETAILS**



**SERVICE ENTRANCE ELEVATION**  
 NOT TO SCALE

**NOTE**  
 CONTRACTOR SHALL COORDINATE NEW ELECTRIC SERVICE WITH THE SERVING ELECTRIC UTILITY AND THE RESIDENT ENGINEER AND / OR AIRPORT MANAGER. THE SERVING ELECTRIC UTILITY CONTACT IS COM ED NEW ELECTRIC SERVICE DEPT. PHONE: 1-866-639-3532 AND MS. KRIEESNA KIRKLAND, SERVICE ENGINEER, COM ED, 1910 SOUTH BRIGGS ST., JOLIET, IL 60433, PHONE: 1-815-724-5805.

No.	Drawing Issue Description	Date	By

Date  
 MARCH 25, 2005  
 Sheet Title

**SERVICE ENTRANCE ELEVATION AND GROUNDING DETAILS**

840-04D8041  
 Project Number  
 KNI 03-08-05  
 Layout By Date  
 KNI 03/08/05  
 Designed By Date  
 CAH 03/08/05  
 Reviewed By Date  
 MV  
 Drawn By Sheet No.

I:\04\005\00540\0408041\DRG\HWGS\0408041-SERVICE PANEL & GROUNDING.DWG MAR 28 2005 12:15PM TMM