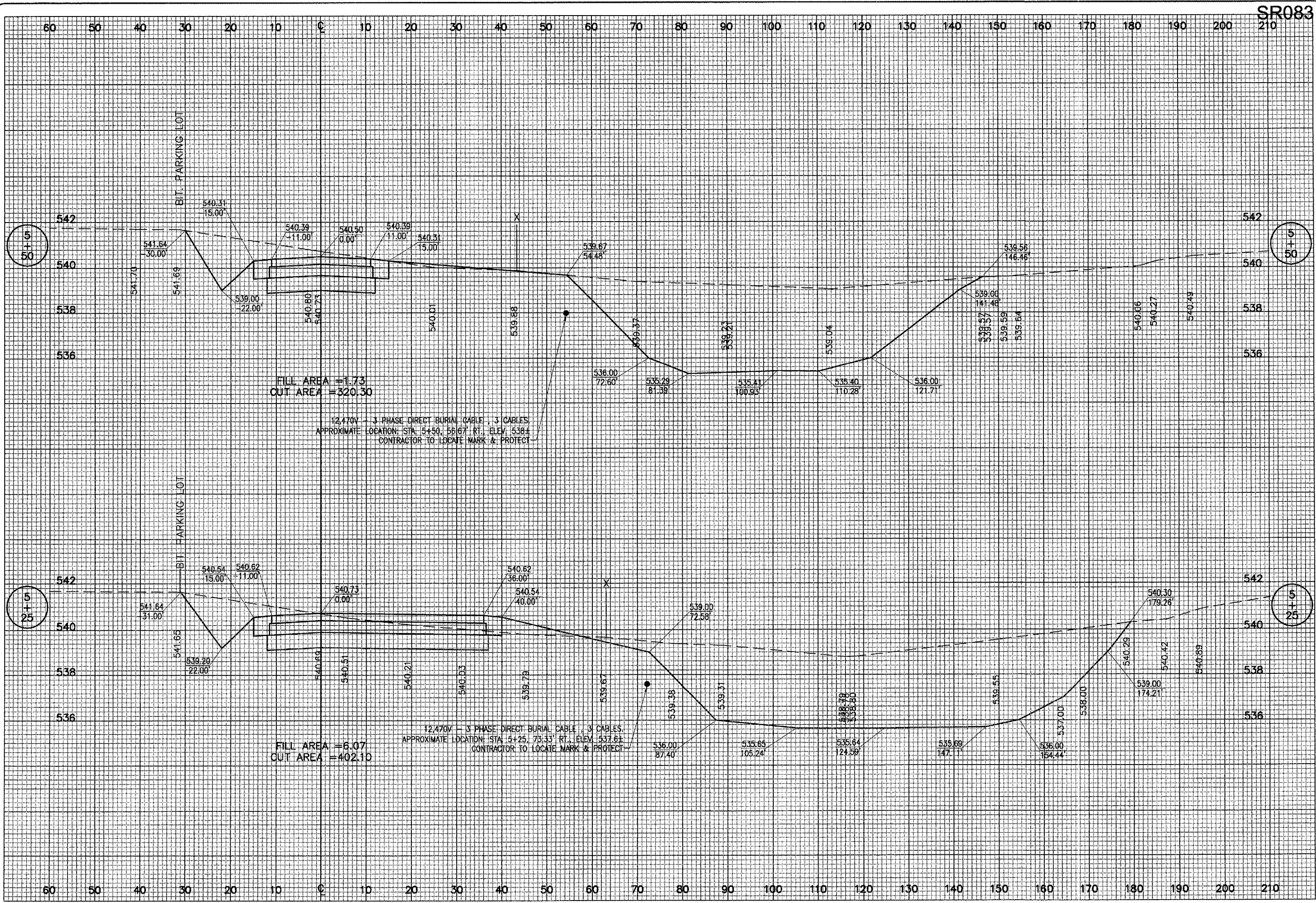


FEB 15, 2005 11:51 AM DPE
 I:\AIRPORT\STLOUIS\837-04RD\VAIRPORT\SHEETS\R-307XS.DWG - STA. 5+25 TO STA. 5+50



SR083

DATE	REVISION

ST. LOUIS REGIONAL AIRPORT
 EAST ALTON, ILLINOIS
 ILL. PROJ.: ALN-3355

HEI Project No. 837-04RDD	DATE	6/23/04
Engineer R-307XS.DWG	LAYOUT	TLW 04/27/04
Scale 1"=10'H, 1"=2'V	DRAWN	TLW 04/27/04
	REVIEWED	WJM 6/23/04

HANSON
 Hanson Professional Services Inc.
 1525 South State Street
 Springfield, MO 65806
 Offices Nationwide

CONSTRUCT T-HANGER
 ACCESS ROAD
 PROPOSED
 CROSS-SECTIONS
 STA. 5+25 TO STA. 5+50