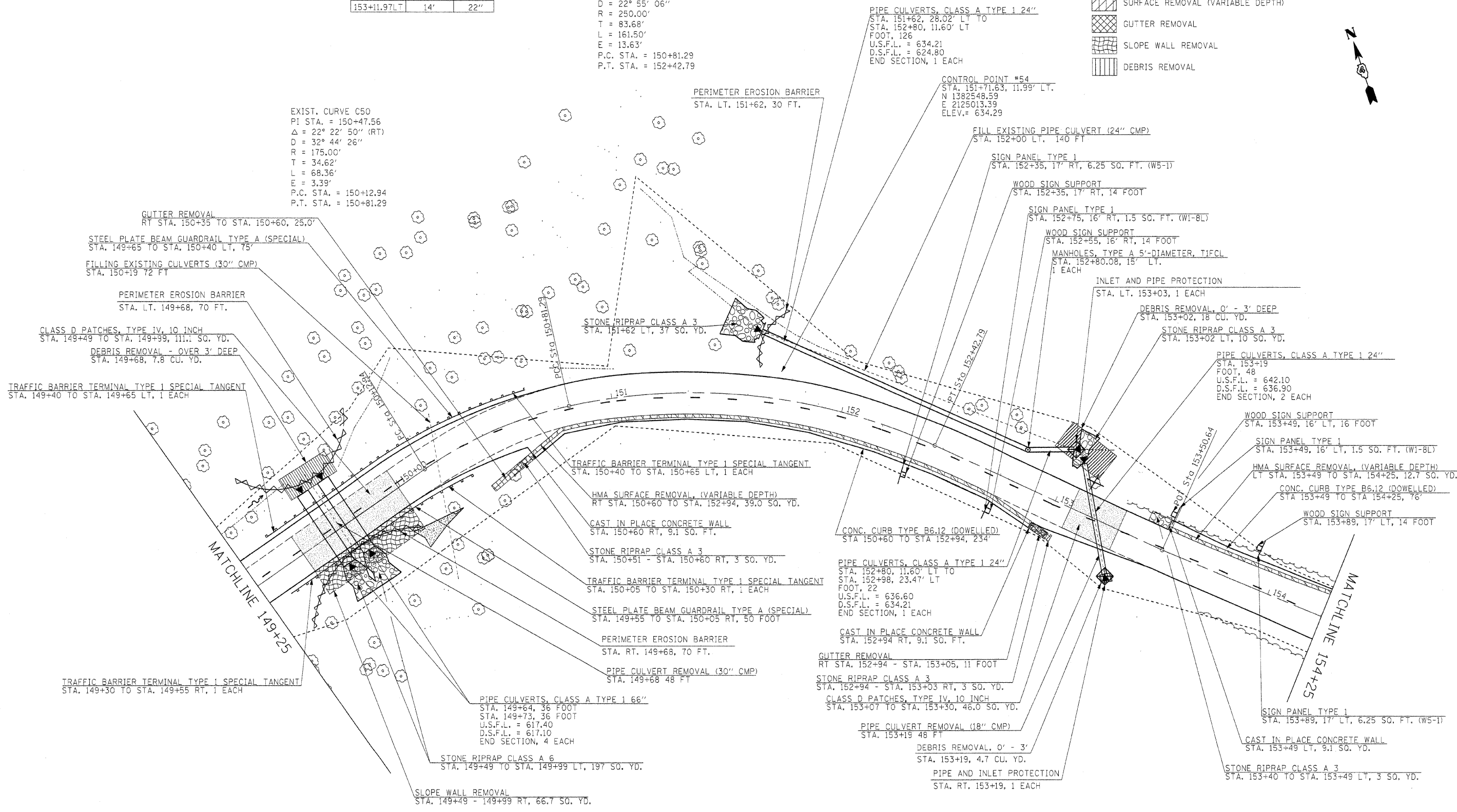


TREE REMOVAL		
STA.	OFFSET	SIZE
153+11.97LT	14'	22"

EXIST. CURVE C51
 PI STA. = 151+64.97
 $\Delta = 37^\circ 00' 45''$ (RT)
 $D = 22^\circ 55' 06''$
 $R = 250.00'$
 $T = 83.68'$
 $L = 161.50'$
 $E = 13.63'$
 P.C. STA. = 150+81.29
 P.T. STA. = 152+42.79

EXIST. CURVE C50
 PI STA. = 150+47.56
 $\Delta = 22^\circ 22' 50''$ (RT)
 $D = 32^\circ 44' 26''$
 $R = 175.00'$
 $T = 34.62'$
 $L = 68.36'$
 $E = 3.39'$
 P.C. STA. = 150+12.94
 P.T. STA. = 150+81.29

- PERIMETER EROSION CONTROL
- PIPE AND INLET PROTECTION
- STONE RIPRAP
- SURFACE REMOVAL (VARIABLE DEPTH)
- GUTTER REMOVAL
- SLOPE WALL REMOVAL
- DEBRIS REMOVAL



FILE NAME =	USER NAME = #USER#	DESIGNED - R.H.D.	REVISED -	STATE OF ILLINOIS DEPARTMENT OF TRANSPORTATION	ARGYLE LAKE STATE PARK MAIN ROAD			F.A. RTE.	SECTION	COUNTY	TOTAL SHEETS	SHEET NO.
#FILE#		DRAWN - J.T.T.	REVISED -		SCALE: 1" = 20'	SHEET NO. 45 OF 162 SHEETS	STA. 149+25 TO STA. 154+25	ARGYLE LAKE STATE PARK	MCDONOUGH	162	45	
		CHECKED - T.T.P.	REVISED -					CONTRACT NO. 46158				
		PLOT DATE = #DATE#	REVISED -					FED. ROAD DIST. NO.	ILLINOIS FED. AID PROJECT			