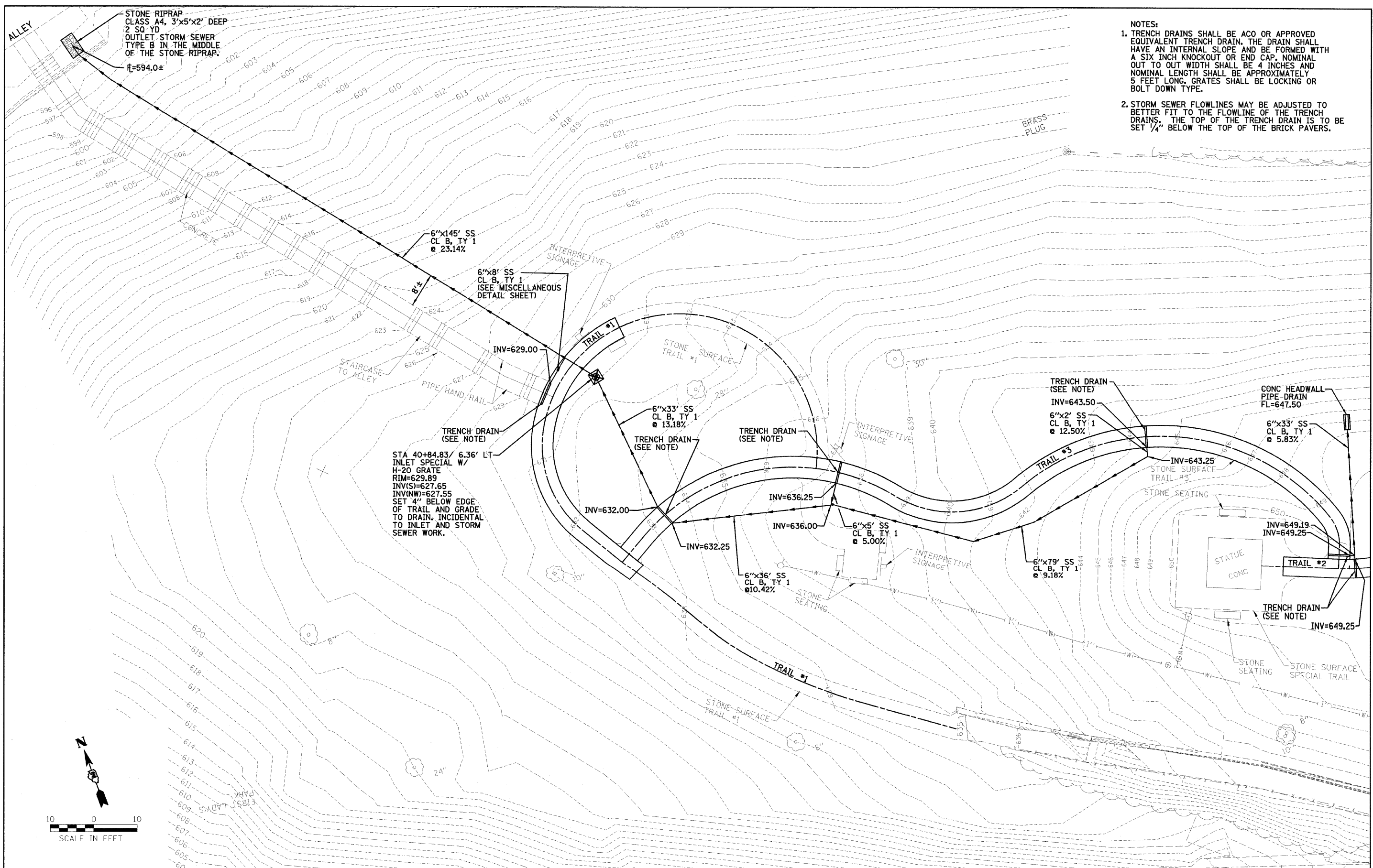


- NOTES:
- TRENCH DRAINS SHALL BE ACO OR APPROVED EQUIVALENT TRENCH DRAIN. THE DRAIN SHALL HAVE AN INTERNAL SLOPE AND BE FORMED WITH A SIX INCH KNOCKOUT OR END CAP. NOMINAL OUT TO OUT WIDTH SHALL BE 4 INCHES AND NOMINAL LENGTH SHALL BE APPROXIMATELY 5 FEET LONG. GRATES SHALL BE LOCKING OR BOLT DOWN TYPE.
 - STORM SEWER FLOWLINES MAY BE ADJUSTED TO BETTER FIT TO THE FLOWLINE OF THE TRENCH DRAINS. THE TOP OF THE TRENCH DRAIN IS TO BE SET 1/4" BELOW THE TOP OF THE BRICK PAVERS.



FILE NAME =	USER NAME = #USER#	DESIGNED - PJM	REVISED -	STATE OF ILLINOIS DEPARTMENT OF TRANSPORTATION	DRAINAGE PLAN	F.A.P. RTE.	SECTION	COUNTY	TOTAL SHEETS	SHEET NO.		
#FILE#		DRAWN - DRR	REVISED			SCALE: 1"=10'	SHEET NO. 11 OF 18 SHEETS	STA.	TO STA.	JO DAVIESS	18	11
		CHECKED - PJM	REVISED			CONTRACT NO. 46165						
		DATE - 11/03/10	REVISED			FED. ROAD DIST. NO. ILLINOIS FED. AID PROJECT						
PLOT SCALE = #SCALE#				REVISD 01/27/11 DRR								
PLOT DATE = #DATE#				24-8441								

FARNSWORTH GROUP, INC.

CONSULTING ENGINEERS - 2709 MCGRAW DRIVE BLOOMINGTON, ILLINOIS 61704 (309) 663-8435 / (309) 663-1571 FAX