

STATE OF ILLINOIS
DEPARTMENT OF TRANSPORTATION
DIVISION OF HIGHWAYS

**IDOT /IDNR STATEWIDE
MISSISSIPPI PALISADES STATE PARK
SOUTH SLOPE ROAD**

**ROUTE PARK ROADS
IDOT PROJECT NO. C-30-009-11
IDNR PROJECT NO. 1-08-001
CARROLL COUNTY**

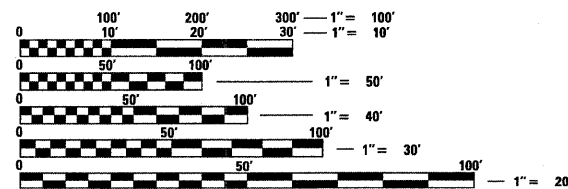
F.A. RTE.	SECTION	COUNTY	TOTAL SHEETS	SHEET NO.
	SOUTH SLOPE ROAD	CARROLL	36	1
FED. ROAD DIST. NO.	ILLINOIS	CONTRACT NO.	46166	
IDNR PROJECT # 1-08-001				

INDEX OF SHEETS

- 1 COVER SHEET
- 2 SUMMARY OF QUANTITIES
- 3-4 TYPICAL SECTIONS
- 5-6 SCHEDULE OF QUANTITIES
- 7 CONTROL TIES
- 8 GENERAL NOTES, LEGEND AND SWPPP PLAN NOTES
- 9 LOCATION MAP/TRAFFIC CONTROL PLAN
- 10-13 PLAN SHEETS
- 14-15 EROSION CONTROL (SWPPP) PLAN
- 16 PAVEMENT MARKING DETAILS
- 17 MISCELLANEOUS DETAILS
- 18 GATE SPECIAL DETAILS
- 19-20 DISTRICT DETAILS
- *21-36 CROSS SECTIONS
INCLUDES 21A.

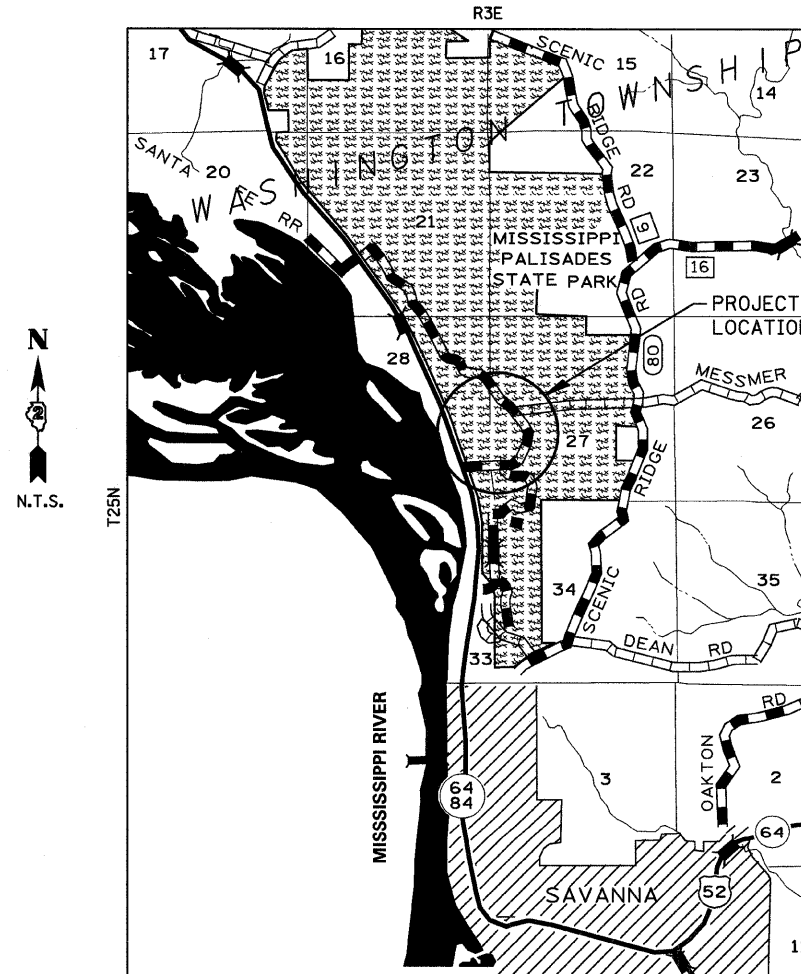
STATE STANDARDS

- 000001-06 STANDARD SYMBOLS, ABBREVIATIONS AND PATTERNS
- 001006 DECIMAL OF AN INCH AND OF A FOOT
- 280001-05 TEMPORARY EROSION CONTROL SYSTEMS
- 542301-03 PRECAST REINFORCED CONCRETE FLARED END SECTION
- 602306-03 INLET - TYPE B
- 604036-02 TYPE B GRATE
- 606101-04 TYPE A GUTTER (INLET, OUTLET & ENTRANCE)
- 701006-03 OFF-RD OPERATIONS, 2L, 2W, 15' TO 24" FROM PAVEMENT EDGE
- 701201-04 LANE CLOSURE, 2L, 2W, DAY ONLY, FOR SPEEDS ≥ 45 MPH
- 701301-04 LANE CLOSURE, 2L, 2W, SHORT TIME OPERATIONS
- 701701-07 URBAN LANE CLOSURE, MULTILANE INTERSECTION
- 701901-01 TRAFFIC CONTROL DEVICES
- 720011-01 METAL POST FOR SIGNS, MARKERS & DELINEATORS
- 728001-01 TELESCOPING STEEL SIGN SUPPORT
- 729001-01 APPLICATIONS OF TYPES A & B METAL POSTS (FOR SIGN AND MARKERS)
- 780001-02 TYPICAL PAVEMENT MARKINGS
- BLR 21-8 TYPICAL APPLICATION OF TRAFFIC CONTROL DEVICES FOR CONSTRUCTION ON RURAL LOCAL HIGHWAY
- BLR 22-6 TYPICAL APPLICATIONS OF TRAFFIC CONTROL DEVICES FOR CONSTRUCTION ON RURAL LOCAL HIGHWAYS



FULL SIZE PLANS HAVE BEEN PREPARED USING STANDARD ENGINEERING SCALES. REDUCED SIZED PLANS WILL NOT CONFORM TO STANDARD SCALES. IN MAKING MEASUREMENTS ON REDUCED PLANS, THE ABOVE SCALES MAY BE USED.

J.U.L.I.E.
JOINT UTILITY LOCATION INFORMATION FOR EXCAVATION
1-800-892-0123
OR 811



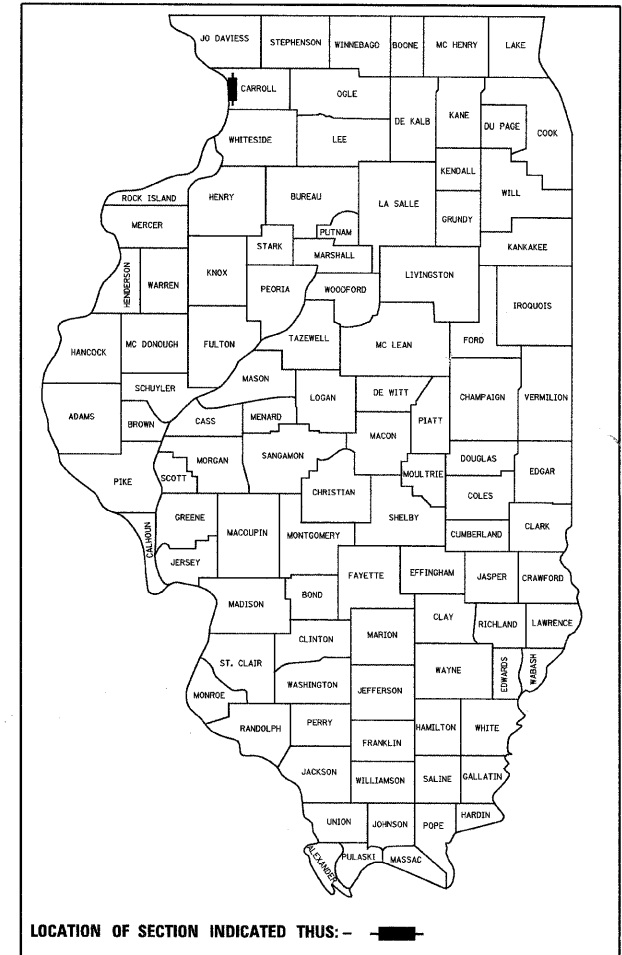
LOCATION MAP

GROSS LENGTH = 3,315.20 FT = 0.628 MILES
NET LENGTH = 3,315.20 FT = 0.628 MILES



Philip Matone 1/28/11
SIGNATURE

EXPIRATION DATE NOV. 30, 2011



LOCATION OF SECTION INDICATED THUS: ———

STATE OF ILLINOIS
DEPARTMENT OF TRANSPORTATION
DIVISION OF HIGHWAYS

SUBMITTED February 4 20 11
William R. Freyler
DEPUTY DIRECTOR OF HIGHWAYS, REGION ENGINEER

March 25 20 11
Scott E. Stitt, P.E.
acting ENGINEER OF DESIGN AND ENVIRONMENT

March 25 20 11
Christine M. Reed
DIRECTOR OF HIGHWAYS, CHIEF ENGINEER

**PRINTED BY THE AUTHORITY
OF THE STATE OF ILLINOIS**

CONTRACT NO. 46166