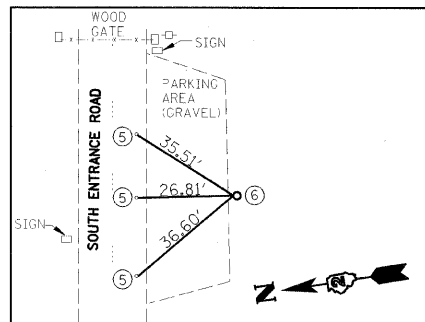
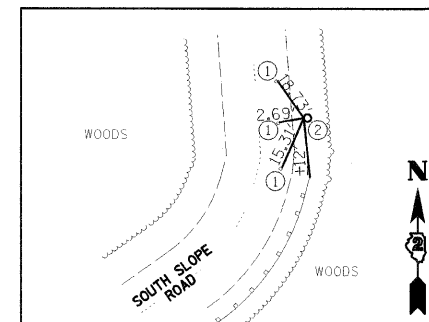


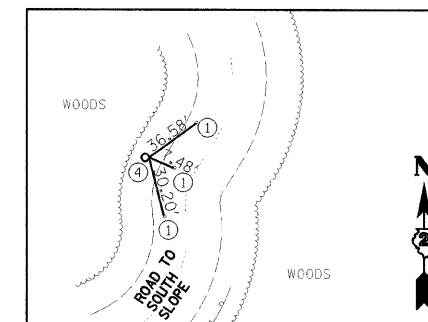
CONTROL PT #GPS 10013  
(IRON PIPE WITH CAP)  
N 1988955.319  
E 2299399.830



CONTROL PT #GPS 10012  
(IRON PIPE WITH CAP)  
N 1989040.345 / E 2299921.883



CONTROL PT #GPS 10017  
(IRON PIPE WITH CAP)  
N 1989195.085  
E 2300725.201



CONTROL PT #5320  
(IRON PIPE WITH CAP)  
N 1989438.041  
E 2300768.776

**LEGEND**

- ① MAG NAIL ± 1' FROM EDGE OF PAVEMENT.
- ② IRON PIPE WITH CAP ± 3' FROM EDGE OF PAVEMENT, FLUSH.
- ③ IRON ROD WITH CAP, FLUSH.
- ④ IRON PIPE WITH CAP ± 5' FROM EDGE OF PAVEMENT, FLUSH.
- ⑤ MAG NAIL 1' ± FROM EDGE OF PAVEMENT (EOP)
- ⑥ IRON PIPE W/ CAP 5' ± FROM EDGE OF PAVEMENT (EOP), 1" ± DEEP

**LAYOUT COORDINATE SCHEDULE**

POINT	STATION/OFFSET	NORTHING	EASTING	ELEVATION	DESCRIPTION/ REMARKS
10013	13+58.33/ 60.38' RT	1988955.319	2299399.830	625.051	IRON PIPE WITH CAP
10012	18+93.14/ 39.53' RT	1989040.345	2299921.883	646.831	IRON PIPE WITH CAP
10017	27+35.26/ 12.41' RT	1989195.085	2300725.201	738.700	IRON PIPE WITH CAP
5320	29+76.85/ 13.80' LT	1989438.041	2300768.776	777.480	IRON PIPE WITH CAP

CONTROL POINTS ARE ALSO SHOWN ON LOCATION MAP AND TRAFFIC CONTROL PLAN FOR GENERAL LOCATION.

DESIGNED - LAW	REVISED - 01/14/11
DRAWN - DRR	REVISED -
CHECKED - PJM	REVISED -
DATE - 10/29/10	REVISED -

**STATE OF ILLINOIS  
DEPARTMENT OF TRANSPORTATION  
DIVISION OF HIGHWAYS**

**CONTROL SURVEY TIES**

SCALE: SHEET NO. 7 OF 36 SHEETS STA. TO STA.

**IDOT/IDNR STATEWIDE  
MISSISSIPPI PALISADES STATE PARK  
SOUTH SLOPE ROAD**

F.A.	SECTION	COUNTY	TOTAL SHEETS	SHEET NO.
	SOUTH SLOPE ROAD	CARROLL	36	7
<b>CONTRACT NO. 46166</b>				
FED. ROAD DIST. NO.	ILLINOIS FED. AID PROJECT			