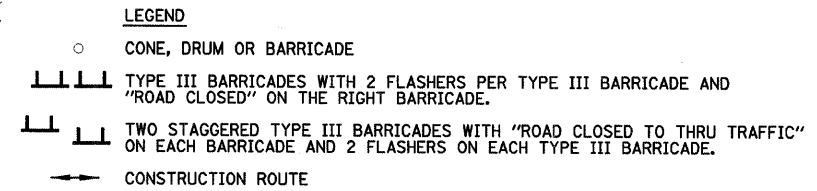
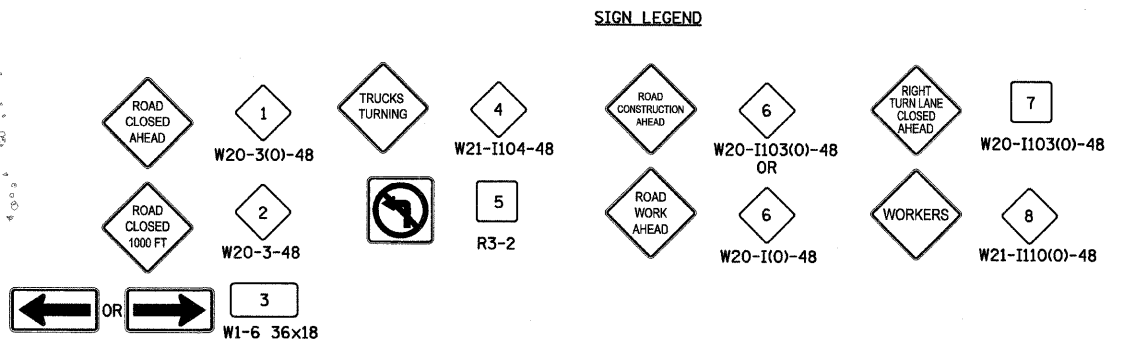
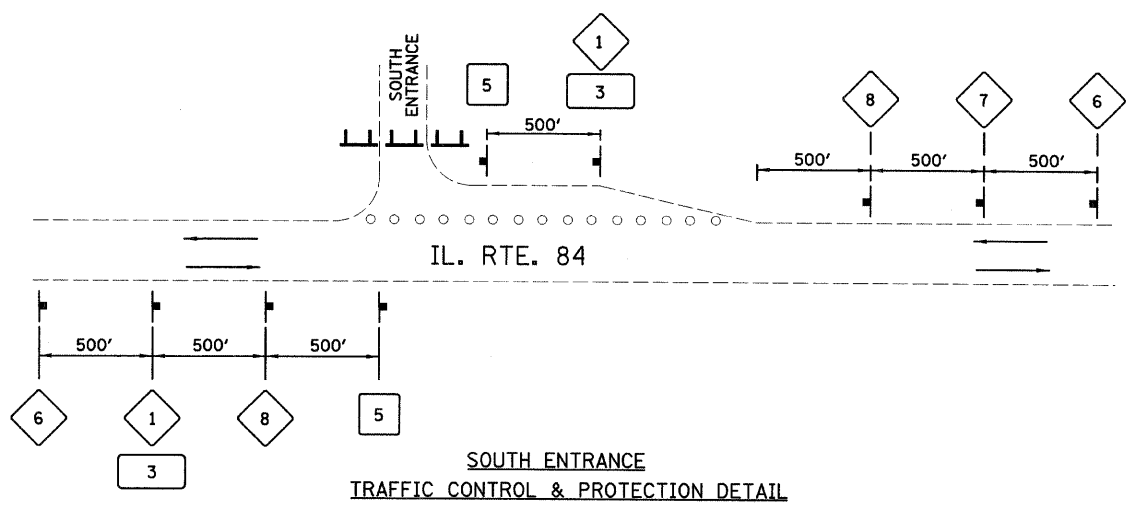
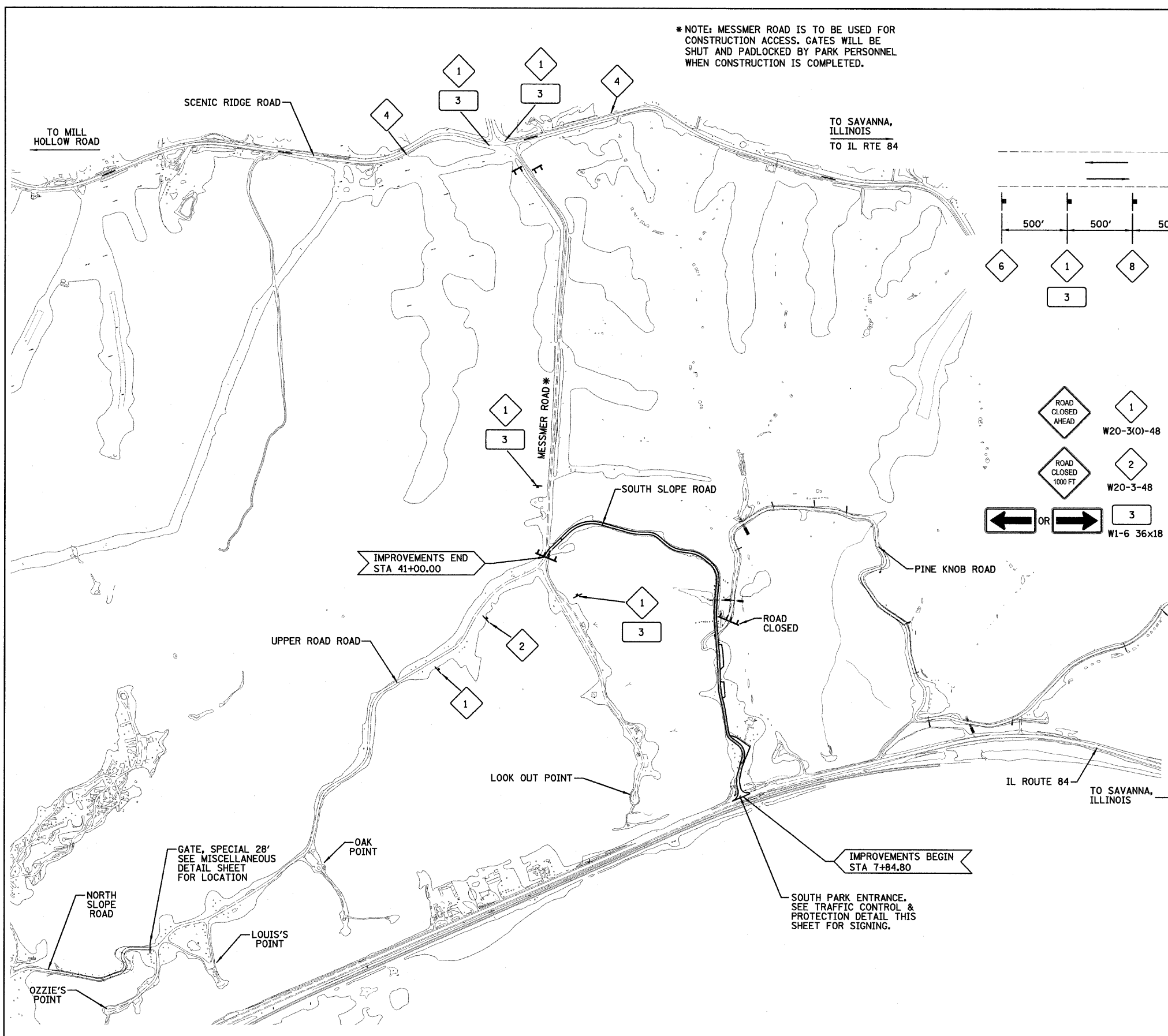
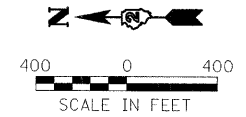


\*NOTE: MESSMER ROAD IS TO BE USED FOR CONSTRUCTION ACCESS. GATES WILL BE SHUT AND PADLOCKED BY PARK PERSONNEL WHEN CONSTRUCTION IS COMPLETED.



- NOTES:
1. FLASHERS ARE REQUIRED ON EACH SIGN FOR THE ROAD CLOSURE.
  2. TYPE III BARRICADES SHALL EXTEND THE ENTIRE DISTANCE OF THE SOUTH SLOPE ENTRANCE AT IL RTE 84, SUCH THAT ONLY CONSTRUCTION TRAFFIC MAY ENTER.



DESIGNED - LAW	REVISED - 01/14/11
DRAWN - DRR	REVISED -
CHECKED - PJM	REVISED -
DATE - 10/29/10	REVISED -

**STATE OF ILLINOIS  
DEPARTMENT OF TRANSPORTATION  
DIVISION OF HIGHWAYS**

**LOCATION MAP AND TRAFFIC CONTROL PLAN**

SCALE: SHEET NO. 9 OF 36 SHEETS STA. TO STA.

**IDOT/IDNR STATEWIDE  
MISSISSIPPI PALISADES STATE PARK  
SOUTH SLOPE ROAD**

F.A.	SECTION	COUNTY	TOTAL SHEETS	SHEET NO.
	SOUTH SLOPE ROAD	CARROLL	36	9
CONTRACT NO. 46166				
FED. ROAD DIST. NO.	ILLINOIS FED. AID PROJECT			