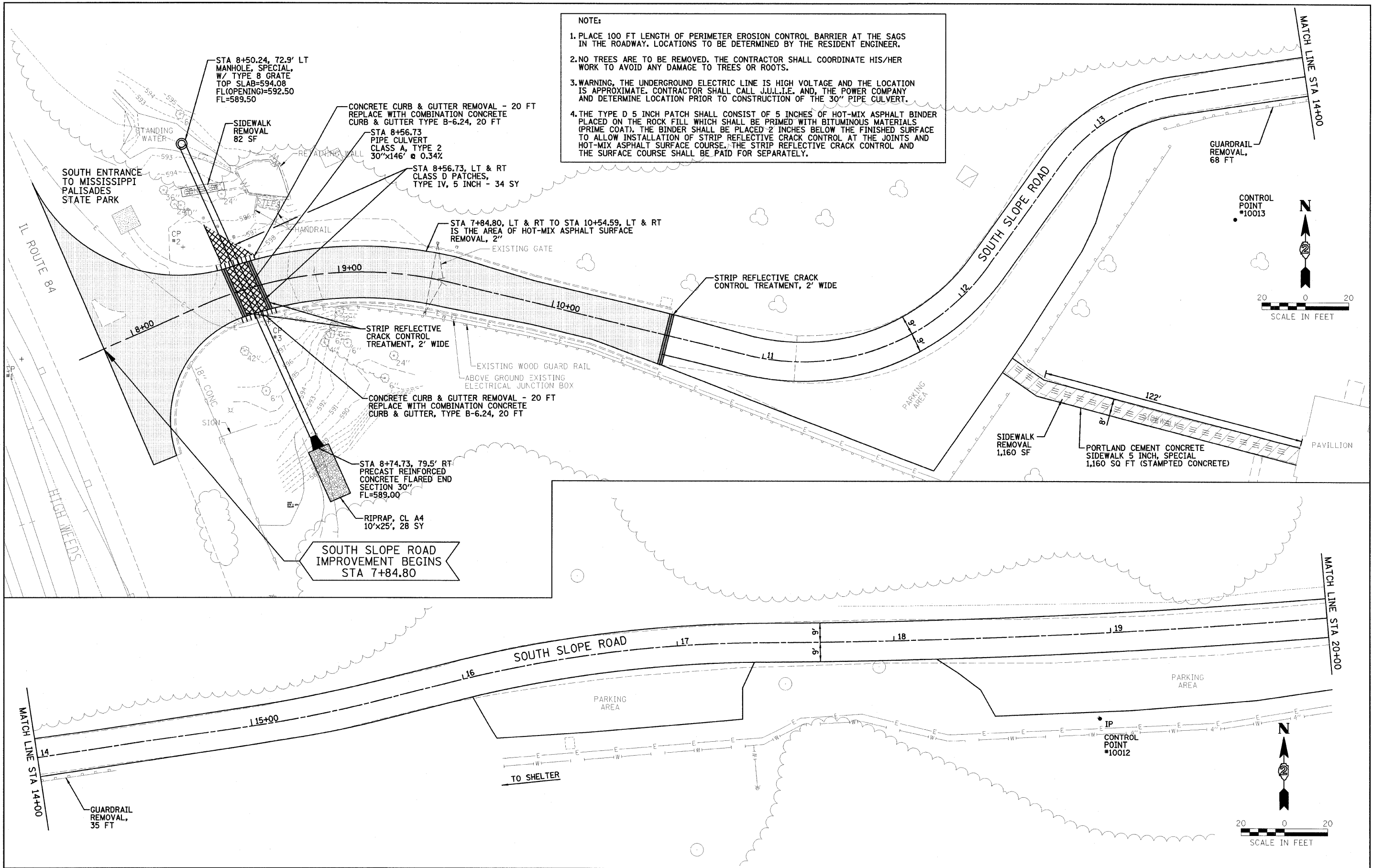


NOTE:

1. PLACE 100 FT LENGTH OF PERIMETER EROSION CONTROL BARRIER AT THE SAGS IN THE ROADWAY. LOCATIONS TO BE DETERMINED BY THE RESIDENT ENGINEER.
2. NO TREES ARE TO BE REMOVED. THE CONTRACTOR SHALL COORDINATE HIS/HER WORK TO AVOID ANY DAMAGE TO TREES OR ROOTS.
3. WARNING, THE UNDERGROUND ELECTRIC LINE IS HIGH VOLTAGE AND THE LOCATION IS APPROXIMATE. CONTRACTOR SHALL CALL J.U.L.I.E. AND, THE POWER COMPANY AND DETERMINE LOCATION PRIOR TO CONSTRUCTION OF THE 30" PIPE CULVERT.
4. THE TYPE D 5 INCH PATCH SHALL CONSIST OF 5 INCHES OF HOT-MIX ASPHALT BINDER PLACED ON THE ROCK FILL WHICH SHALL BE PRIMED WITH BITUMINOUS MATERIALS (PRIME COAT). THE BINDER SHALL BE PLACED 2 INCHES BELOW THE FINISHED SURFACE TO ALLOW INSTALLATION OF STRIP REFLECTIVE CRACK CONTROL AT THE JOINTS AND HOT-MIX ASPHALT SURFACE COURSE. THE STRIP REFLECTIVE CRACK CONTROL AND THE SURFACE COURSE SHALL BE PAID FOR SEPARATELY.



FILE NAME =	USER NAME = #USER#	DESIGNED - LAW	REVISED - 01/14/11	STATE OF ILLINOIS DEPARTMENT OF TRANSPORTATION	SOUTH SLOPE ROAD PLAN SHEET	F.A. RTE.	SECTION	COUNTY	TOTAL SHEETS	SHEET NO.
#FILE#		DRAWN - DRR	REVISED -			SOUTH SLOPE ROAD	CARROLL	36	10	
PLOT SCALE = #SCALE#		CHECKED - PJM	REVISED -			CONTRACT NO. 46166				
PLOT DATE = #DATE#		DATE - 10/29/10	REVISED -			FED. ROAD DIST. NO. [ILLINOIS] FED. AID PROJECT				
SCALE: 1"=20'					SHEET NO. 10 OF 36 SHEETS		STA. 10+54.59 TO STA. 20+00.00		REVISED 01/25/11 DRR	