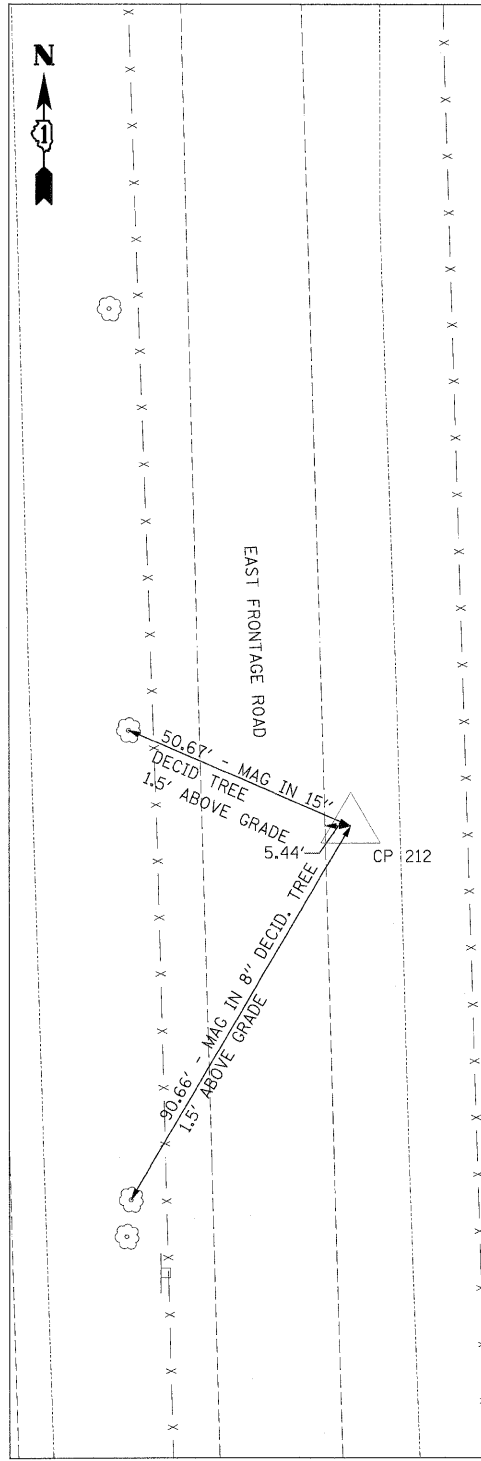


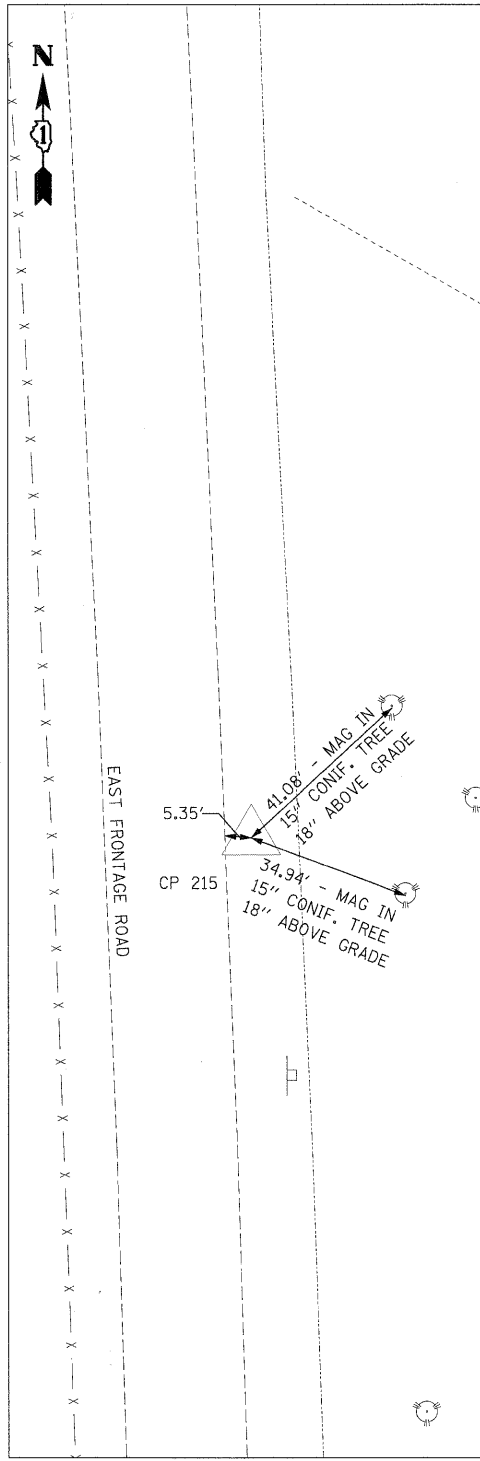
CP 112

N 172602.46
 E 1022531.24
 STA 1076+95.33
 OFF 92.60' LT
 ELEV 544.68



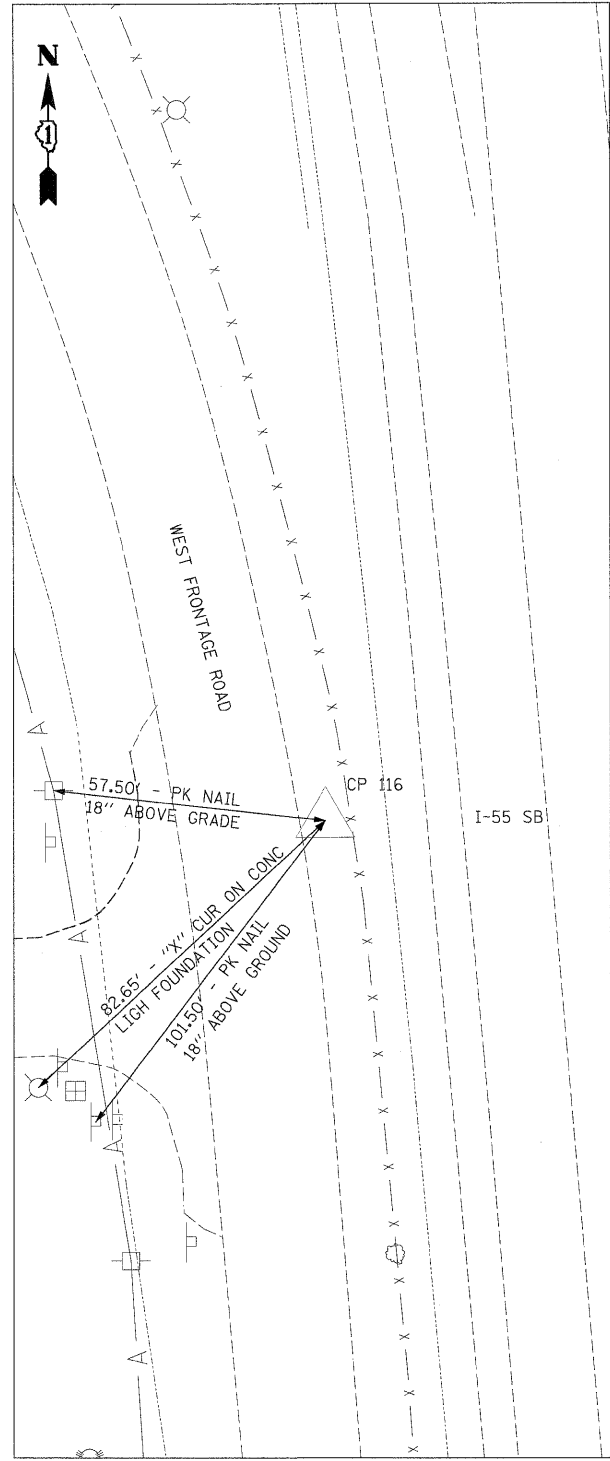
CP 212

N 1726715.05
 E 1022751.39
 STA 1077+01.86
 OFF 127.82' RT
 ELEV 543.42



CP 215

N 1728506.27
 E 1022699.11
 STA 1094+91.74
 OFF 127.03' RT
 ELEV 554.12



CP 116

N 1729102.61
 E 1022441.33
 STA 1101+02.50
 OFF 92.77' LT
 ELEV 551.55