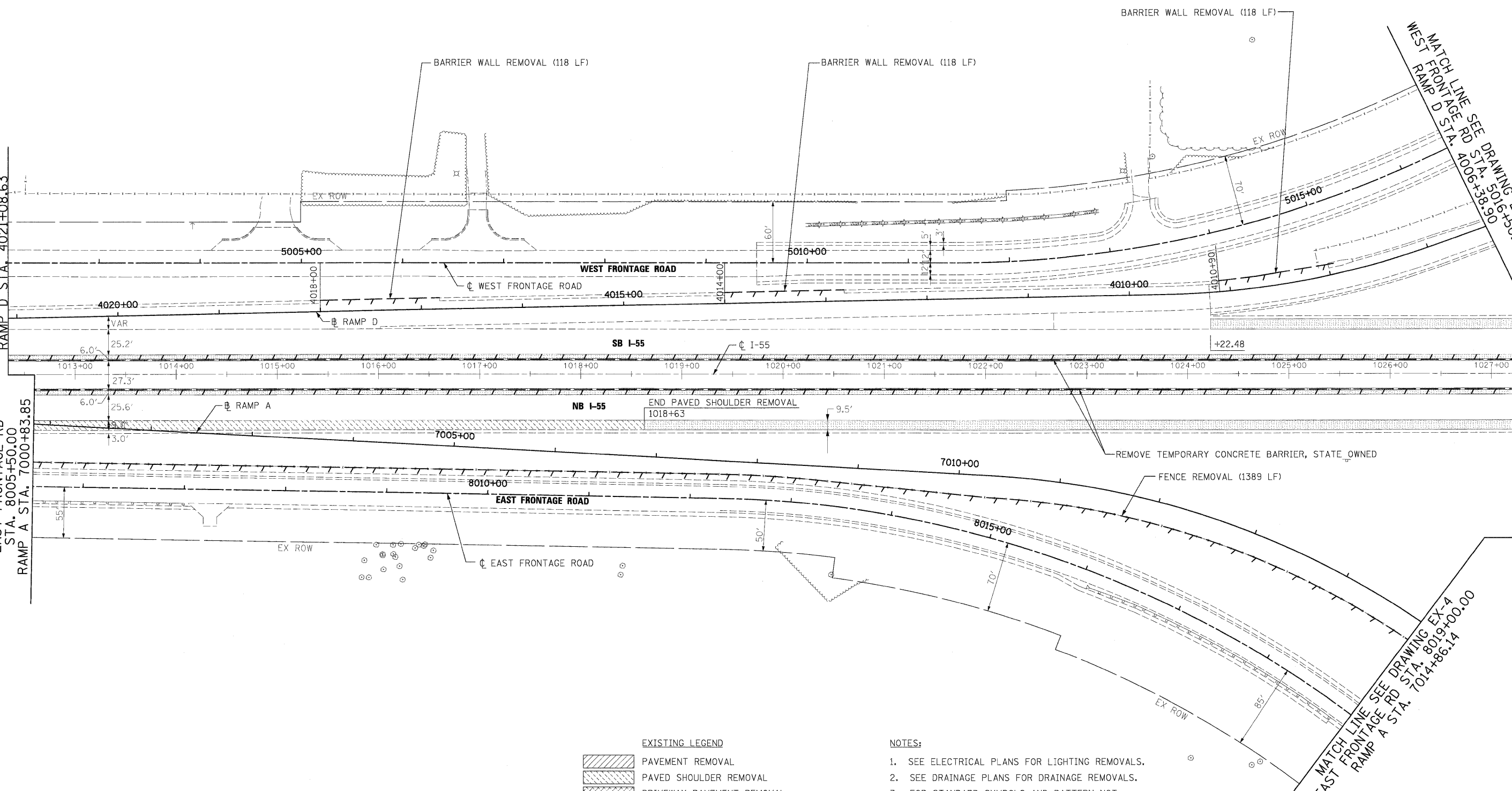


MATCH LINE SEE DRAWING EX-1  
WEST FRONTAGE RD  
STA. 5002+10.00  
RAMP D STA. 4021+08.63

MATCH LINE SEE DRAWING EX-1  
EAST FRONTAGE RD  
STA. 8005+50.00  
RAMP A STA. 7000+83.85

MATCH LINE SEE DRAWING EX-3  
WEST FRONTAGE RD  
STA. 5016+50.00  
RAMP D STA. 4006+58.90

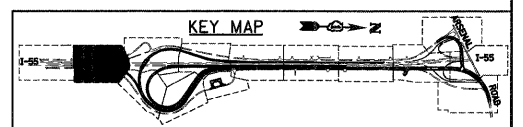
MATCH LINE SEE DRAWING EX-4  
EAST FRONTAGE RD  
RAMP A STA. 7014+86.14



**EXISTING LEGEND**

	PAVEMENT REMOVAL
	PAVED SHOULDER REMOVAL
	DRIVEWAY PAVEMENT REMOVAL
	TREE REMOVAL WITH UNIT DIAMETER TRUNK
	LINEAL REMOVAL ITEM
	HOT-MIX ASPHALT SURFACE REMOVAL, VARIABLE DEPTH

- NOTES:**
- SEE ELECTRICAL PLANS FOR LIGHTING REMOVALS.
  - SEE DRAINAGE PLANS FOR DRAINAGE REMOVALS.
  - FOR STANDARD SYMBOLS AND PATTERN NOT SHOWN SEE STANDARD 00001-05.
  - FOR ROW CALL-OUTS SEE PLAT OF HIGHWAYS SHEETS.



**McDonough Associates Inc.**  
Engineers / Architects  
130 East Randolph Street, Chicago, Illinois 60601

FILE NAME = D160F12-SHT-REM02.dgn	USER NAME = "Kluegel"	DESIGNED - JTF	REVISED -
		DRAWN - JTF	REVISED -
		CHECKED - DLT	REVISED -
		DATE - 2/4/11	REVISED -

**STATE OF ILLINOIS  
DEPARTMENT OF TRANSPORTATION**

**EXISTING PLAN AND REMOVALS**

SCALE: 1"=50' SHEET NO. 2 OF 15 SHEETS STA. TO STA.

F.A.I. RTE. 55	SECTION 99-2HB-2B-1	COUNTY WILL	TOTAL SHEETS 756	SHEET NO. 44
FED. ROAD DIST. NO. 1 ILLINOIS FED. AID PROJECT			CONTRACT NO. 60F12	