

EXISTING LEGEND

	PAVEMENT REMOVAL
	PAVED SHOULDER REMOVAL
	DRIVEWAY PAVEMENT REMOVAL
	TREE REMOVAL WITH UNIT DIAMETER TRUNK
	LINEAL REMOVAL ITEM
	HOT-MIX ASPHALT SURFACE REMOVAL, VARIABLE DEPTH

NOTES:

1. SEE ELECTRICAL PLANS FOR LIGHTING REMOVALS.
2. SEE DRAINAGE PLANS FOR DRAINAGE REMOVALS.
3. FOR STANDARD SYMBOLS AND PATTERN NOT SHOWN SEE STANDARD 000001-05.
4. FOR ROW CALL-OUTS SEE PLAT OF HIGHWAYS SHEETS.

MATCH LINE SEE DRAWING EX-3
RAMP B STA. 3031+00.00

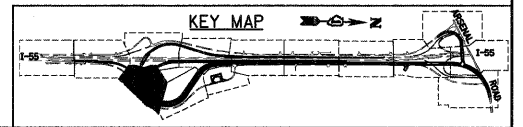
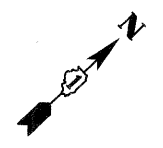
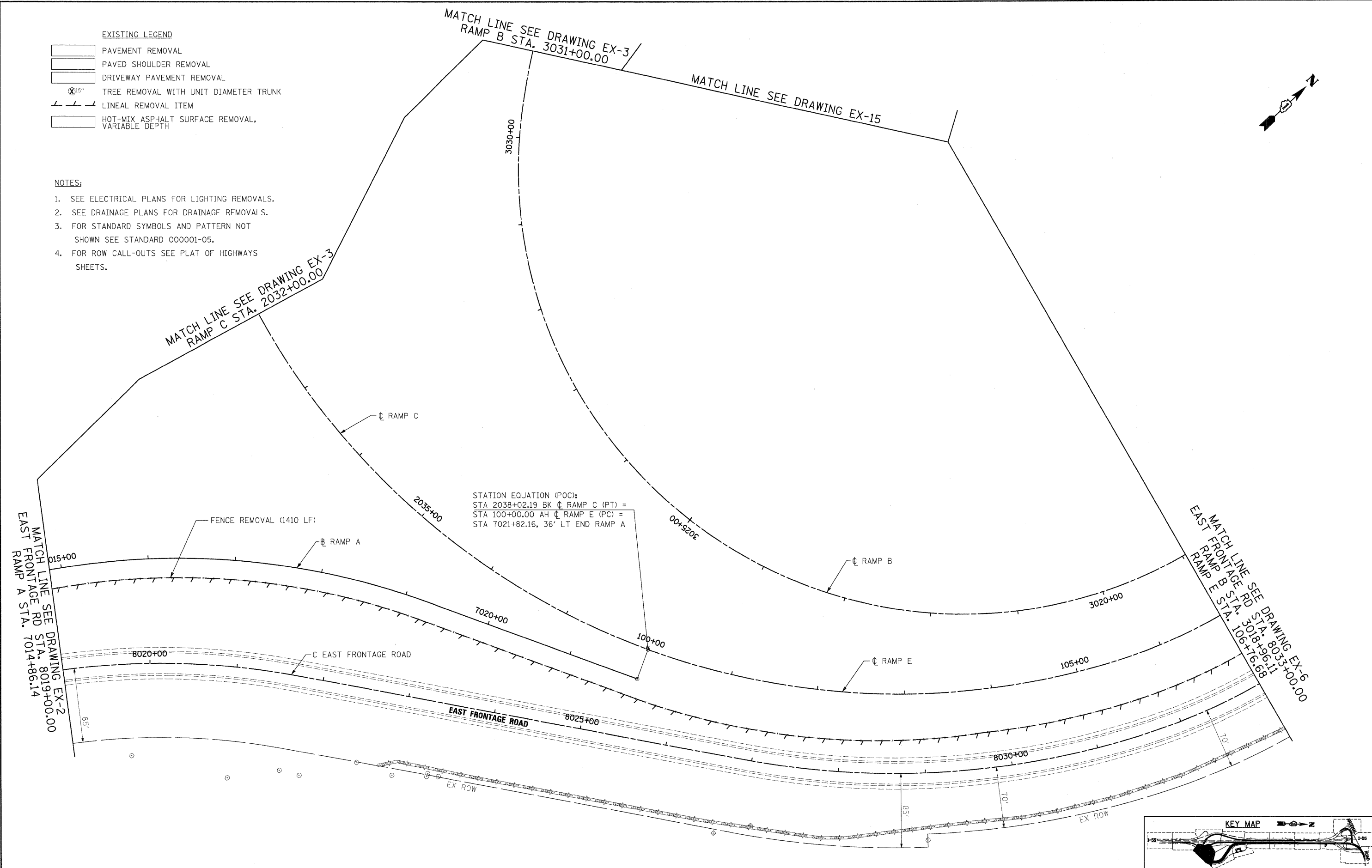
MATCH LINE SEE DRAWING EX-15

MATCH LINE SEE DRAWING EX-3
RAMP C STA. 2032+00.00

MATCH LINE SEE DRAWING EX-6
RAMP E STA. 106+16.68
EAST FRONTAGE RD STA. 8033+00.00

MATCH LINE SEE DRAWING EX-2
EAST FRONTAGE RD STA. 8019+00.00
RAMP A STA. 7014+86.14

STATION EQUATION (POC):
STA 2038+02.19 BK ϕ RAMP C (PT) =
STA 100+00.00 AH ϕ RAMP E (PC) =
STA 7021+82.16, 36' LT END RAMP A



McDonough Associates Inc.
 Engineers / Architects
 130 East Randolph Street, Chicago, Illinois 60601

FILE NAME =	USER NAME = TKluegel
D160F12-SHT-REM04.dgn	
PLLOT SCALE = 1:50	
PLLOT DATE = 2/3/2011	

DESIGNED - JTF	REVISD -
DRAWN - JTF	REVISD -
CHECKED - DLT	REVISD -
DATE - 2/4/11	REVISD -

DESIGNED - JTF	REVISD -
DRAWN - JTF	REVISD -
CHECKED - DLT	REVISD -
DATE - 2/4/11	REVISD -

**STATE OF ILLINOIS
DEPARTMENT OF TRANSPORTATION**

EXISTING PLAN AND REMOVALS

SCALE: 1"=50' SHEET NO. 4 OF 15 SHEETS STA. TO STA.

F.A.I. RTE.	SECTION	COUNTY	TOTAL SHEETS	SHEET NO.
55	99-2HB-2B-1	WILL	756	46
CONTRACT NO. 60F12				
FED. ROAD DIST. NO. 1 ILLINOIS FED. AID PROJECT				