



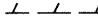
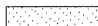
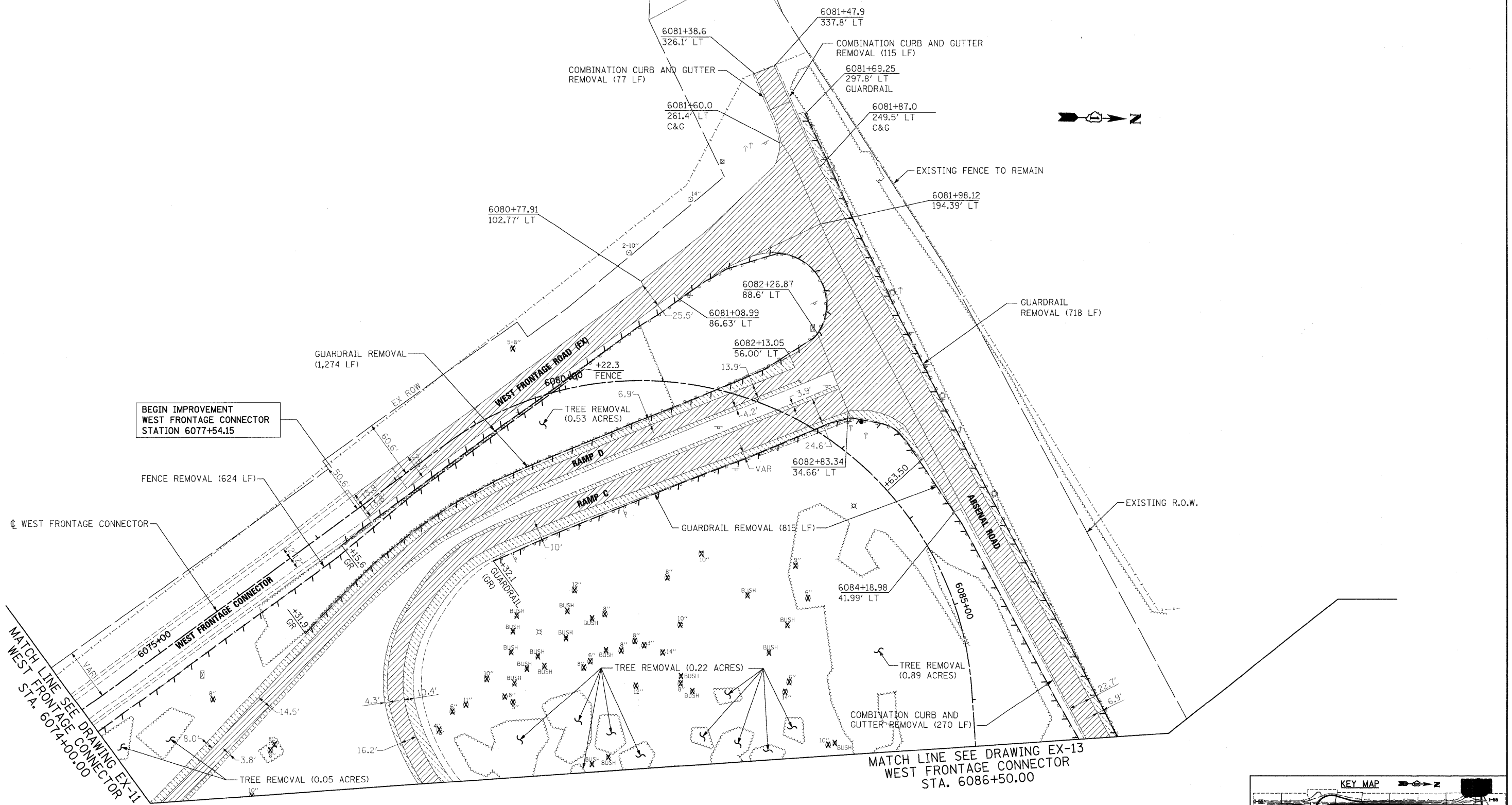


EXISTING LEGEND

-  PAVEMENT REMOVAL
-  PAVED SHOULDER REMOVAL
-  DRIVEWAY PAVEMENT REMOVAL
-  TREE REMOVAL WITH UNIT DIAMETER TRUNK
-  LINEAL REMOVAL ITEM
-  HOT-MIX ASPHALT SURFACE REMOVAL, VARIABLE DEPTH

NOTES:

1. SEE ELECTRICAL PLANS FOR LIGHTING REMOVALS.
2. SEE DRAINAGE PLANS FOR DRAINAGE REMOVALS.
3. FOR STANDARD SYMBOLS AND PATTERN NOT SHOWN SEE STANDARD 000001-05.
4. FOR ROW CALL-OUTS SEE PLAT OF HIGHWAYS SHEETS.



McDonough Associates Inc.
 Engineers / Architects
 130 East Randolph Street, Chicago, Illinois 60601

FILE NAME = D162F12-SHT-REM12.dgn
 USER NAME = TKLuegel
 DESIGNED - JTF
 DRAWN - JTF
 CHECKED - DLT
 DATE - 2/4/11

REVISD -
 REVISD -
 REVISD -
 REVISD -

STATE OF ILLINOIS
 DEPARTMENT OF TRANSPORTATION

EXISTING PLAN AND REMOVALS

SCALE: 1"=50' SHEET NO. 12 OF 15 SHEETS STA. TO STA.

F.A.I. RTE.	SECTION	COUNTY	TOTAL SHEETS	SHEET NO.
55	99-2HB-2B-1	WILL	756	54
CONTRACT NO. 60F12				
FED. ROAD DIST. NO. 1 ILLINOIS FED. AID PROJECT				