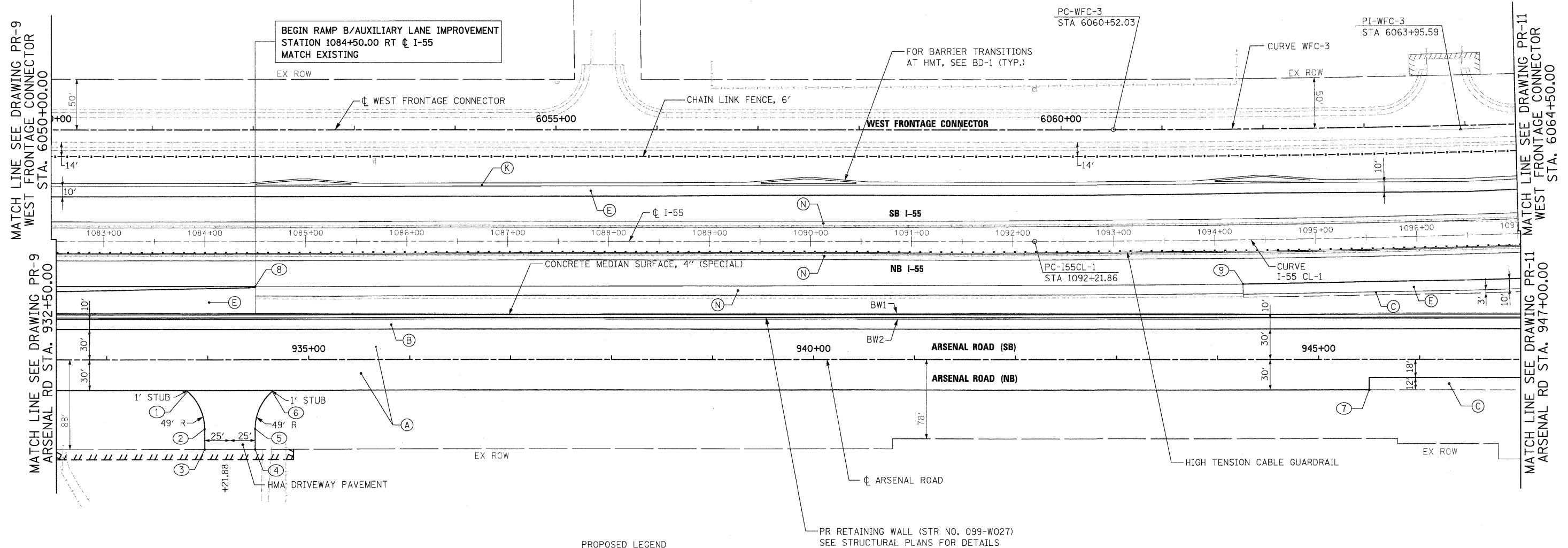
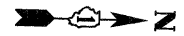


NO.	STATION	OFFSET
①	933+80.01	31.00' RT
②	933+96.88	68.00' RT
③	933+96.88	88.00' RT
④	934+46.88	88.00' RT
⑤	934+46.88	68.00' RT
⑥	934+63.76	31.00' RT
⑦	945+50.00	30.00' RT
⑧	1084+50.00	44.36' RT
⑨	1094+27.54	43.69' RT

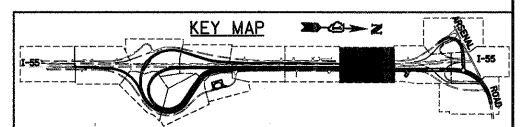


**PROPOSED LEGEND**

- (A) PCC PAVEMENT 10" (JOINTED)
- (B) PCC SHOULDERS, 10"
- (C) AGGREGATE SHOULDERS, TYPE B 10"
- (D) HMA PAVEMENT (SEE TYPICAL SECTIONS)
- (E) HMA SHOULDERS (SEE TYPICAL SECTIONS)
- (F) CONCRETE MEDIAN SURFACE, 4 INCH
- (G) CONCRETE MEDIAN RAMP NOSE (SEE STD 606301-04)  
PAID FOR AS CONCRETE MEDIAN, TYPE SB-6.24 (MODIFIED)
- (H) CONCRETE MEDIAN, TYPE SB 6.24 (MODIFIED)
- (I) COMBINATION CONCRETE CURB & GUTTER TYPE B-6.24
- (J) COMBINATION CONCRETE CURB & GUTTER TYPE M-2.24
- (K) CONCRETE BARRIER, DOUBLE FACE, 42" HEIGHT
- (L) IMPACT ATTENUATOR FULLY REDIRECTIVE NARROW TEST LEVEL 3
- (M) CORRUGATED MEDIAN
- (N) HMA SHOULDER CROSS SLOPE CORRECTION
- (O) STATION OFFSET
- (P) FENCE AS INDICATED IN PLANS

**NOTE:**  
 1. FOR CURVE DATA SEE ALIGNMENTS, TIES AND BENCHMARKS DRAWING NOS. AT-1 TO AT-7  
 2. FOR ROW CALL-OUTS SEE PLAT OF HIGHWAY SHEETS

BW1 = CONCRETE BARRIER, SINGLE FACE, 6" TOP, 42" HEIGHT  
 BW2 = CONCRETE BARRIER, SINGLE FACE, 9" TOP, 42" HEIGHT



**McDonough Associates Inc.**  
 Engineers / Architects  
 130 East Randolph Street, Chicago, Illinois 60601

FILE NAME = D:\60F12-SHT-PLAN10.dgn	USER NAME = TKLuegel	DESIGNED - JTF	REVISED -
PLLOT SCALE = 1:50	CHECKED - DLT	DRAWN - JTF	REVISED -
PLLOT DATE = 2/3/2011	DATE - 2/4/11	CHECKED - DLT	REVISED -

**STATE OF ILLINOIS**  
**DEPARTMENT OF TRANSPORTATION**

**PROPOSED PLAN**  
 SCALE: 1"=50' SHEET NO. 10 OF 15 SHEETS STA. TO STA.

F.A.I R.T.E.	SECTION	COUNTY	TOTAL SHEETS	SHEET NO.
55	99-2HB-2B-1	WILL	756	68
CONTRACT NO. 60F12				
FED. ROAD DIST. NO. 1 ILLINOIS FED. AID PROJECT				