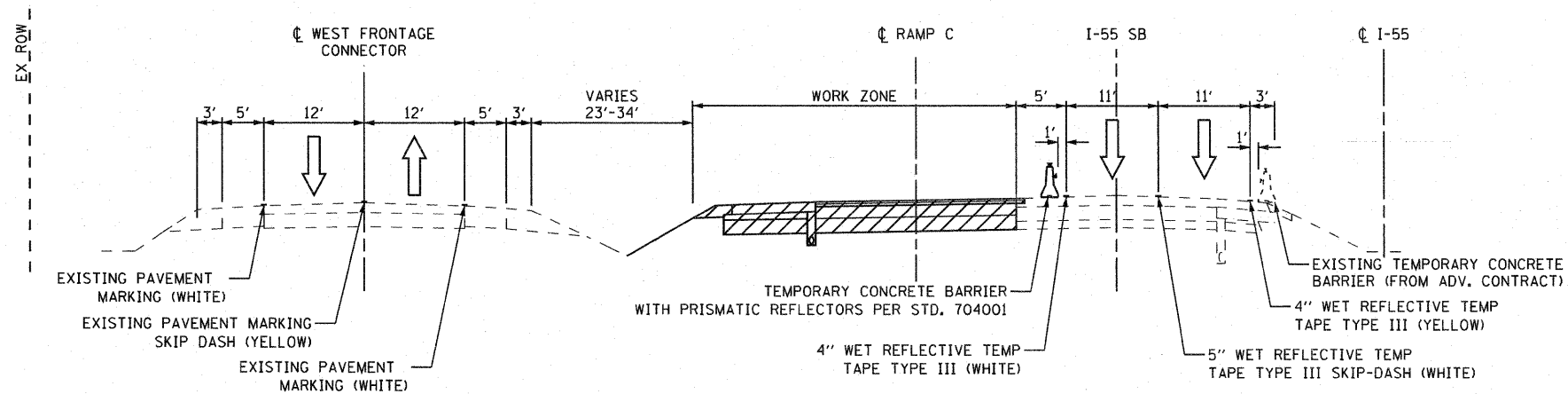
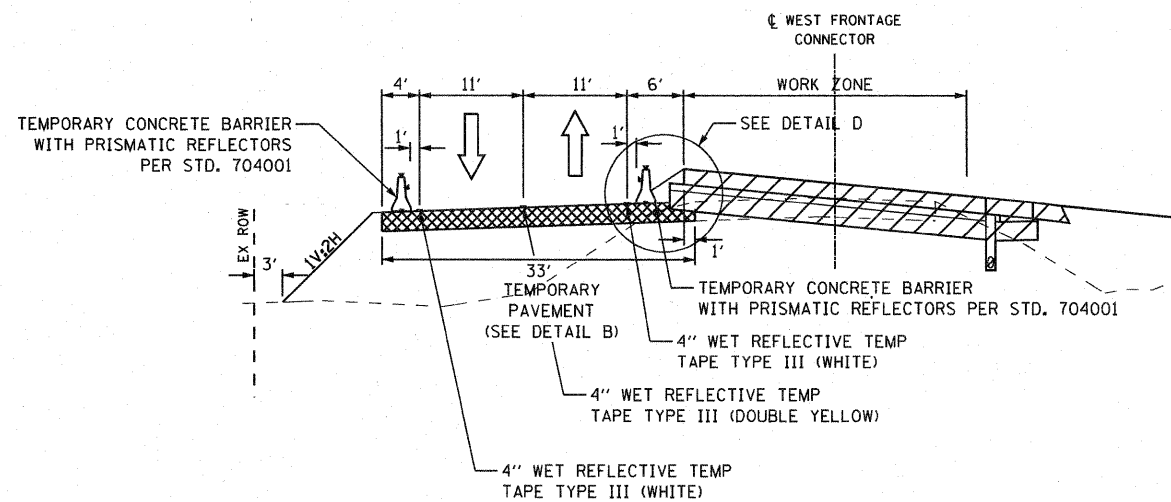


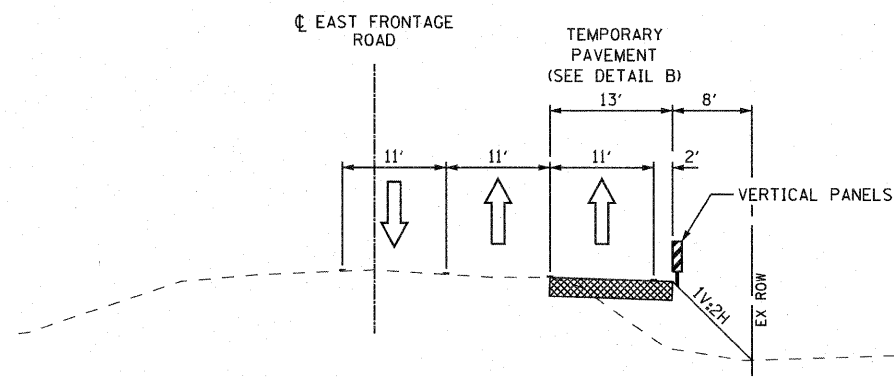
EJM ENGINEERING, INC.
 411 South Wells Street Suite 800
 Chicago, Illinois 60607



RAMP C EXIT LANE & SHOULDER
STAGE 3
 I-55: STA. 1052+50 TO STA. 1077+78



WEST FRONTAGE CONNECTOR
(TEMPORARY RUNAROUND)
STAGE 4



EAST FRONTAGE ROAD
STAGE 4B

LEGEND

	CONSTRUCTION ZONE
	TEMPORARY PAVEMENT

FILE NAME = ...\\D160F12-SHT-STAGING02.dgn	USER NAME = gr01	DESIGNED - GR	REVISED -
		DRAWN - GR	REVISED -
		CHECKED - RY	REVISED -
		DATE - 02/04/2011	REVISED -

STATE OF ILLINOIS
DEPARTMENT OF TRANSPORTATION

MAINTENANCE OF TRAFFIC		TYPICAL SECTIONS	
SCALE: NONE	SHEET NO. 4 OF 4 SHEETS	STA.	TO STA.

F.A.I. RTE.	SECTION	COUNTY	TOTAL SHEETS	SHEET NO.
55	99-2HB-2B-1	WILL	756	91
FED. ROAD DIST. NO. 1 ILLINOIS FED. AID PROJECT			CONTRACT NO. 60F12	

FINAL