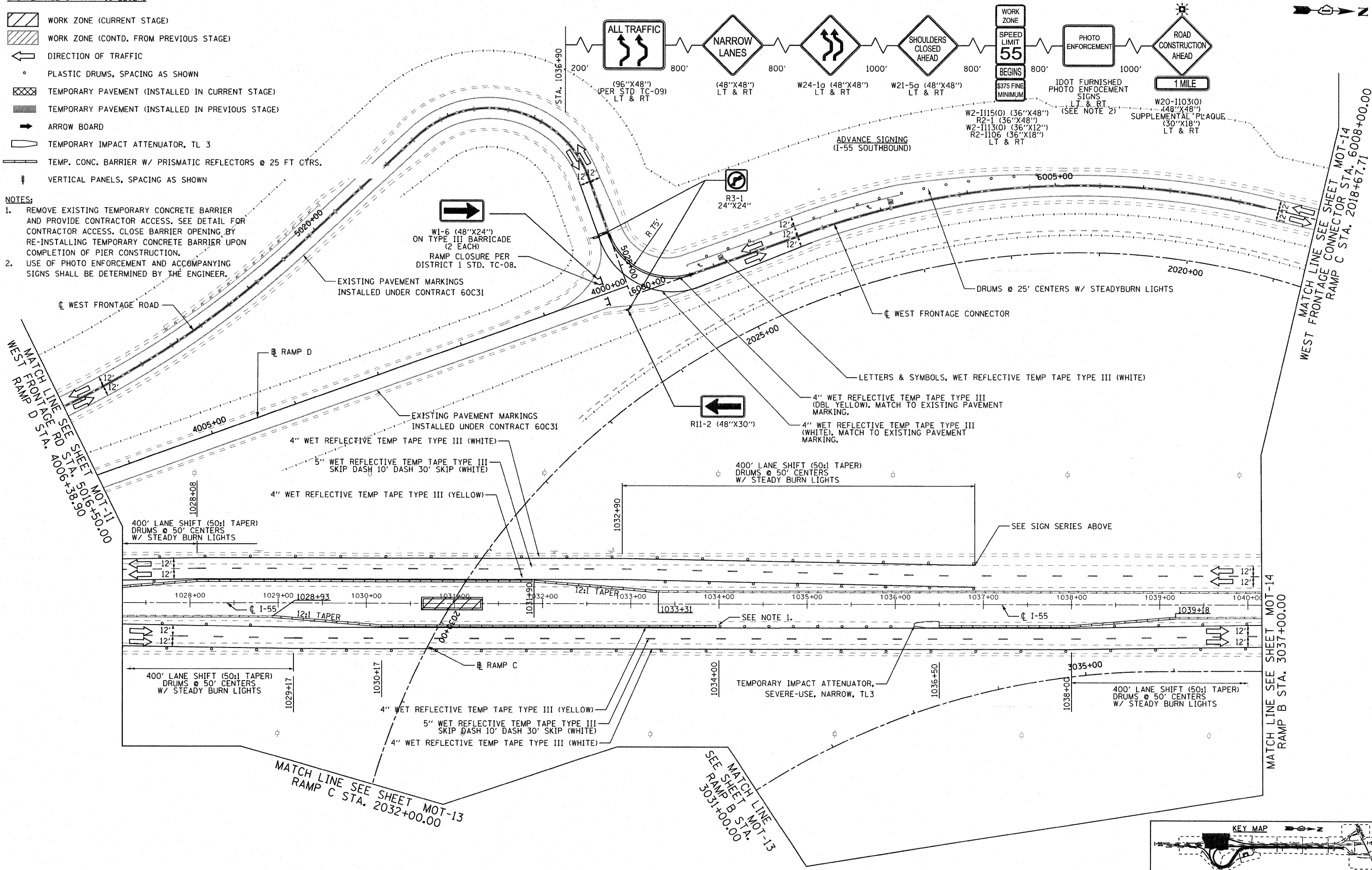


**MAINTENANCE OF TRAFFIC LEGEND**

- WORK ZONE (CURRENT STAGE)
- WORK ZONE (CONTD. FROM PREVIOUS STAGE)
- DIRECTION OF TRAFFIC
- PLASTIC DRUMS, SPACING AS SHOWN
- TEMPORARY PAVEMENT (INSTALLED IN CURRENT STAGE)
- TEMPORARY PAVEMENT (INSTALLED IN PREVIOUS STAGE)
- ARROW BOARD
- TEMPORARY IMPACT ATTENUATOR, TL 3
- TEMP. CONC. BARRIER W/ PRISMATIC REFLECTORS @ 25 FT CTRS.
- VERTICAL PANELS, SPACING AS SHOWN

- NOTES:**
- REMOVE EXISTING TEMPORARY CONCRETE BARRIER AND PROVIDE CONTRACTOR ACCESS. SEE DETAIL FOR CONTRACTOR ACCESS. CLOSE BARRIER OPENING BY RE-INSTALLING TEMPORARY CONCRETE BARRIER UPON COMPLETION OF PIER CONSTRUCTION.
  - USE OF PHOTO ENFORCEMENT AND ACCOMPANYING SIGNS SHALL BE DETERMINED BY THE ENGINEER.



MATCH LINE SEE SHEET MOT-11  
WEST FRONTAGE RD STA. 5016+50.00  
WEST RAMP D STA. 4006+38.90

MATCH LINE SEE SHEET MOT-14  
WEST FRONTAGE CONNECTOR STA. 6008+00.00  
RAMP C STA. 2018+67.71

MATCH LINE SEE SHEET MOT-13  
RAMP C STA. 2032+00.00

SEE MATCH LINE MOT-13  
RAMP B STA. 3031+00.00

MATCH LINE SEE SHEET MOT-14  
RAMP B STA. 3037+00.00

**EJM ENGINEERING, INC.**  
411 South Wells Street Suite 800  
Chicago, Illinois 60607

FILE NAME = ...\\D160F12-SHT-STAGINGI03.dgn	USER NAME = gra1	DESIGNED - GR	REVISED -
PLOT SCALE = 1:50	CHECKED - RY	DRAWN - GR	REVISED -
PLOT DATE = 2/23/2011	DATE - 02/04/2011	CHECKED - RY	REVISED -

**STATE OF ILLINOIS  
DEPARTMENT OF TRANSPORTATION**

**MAINTENANCE OF TRAFFIC  
STAGE 1**

SCALE: 1"=50' SHEET NO. 2 OF 13 SHEETS STA. TO STA.

F.A.I. RTE.	SECTION	COUNTY	TOTAL SHEETS	SHEET NO.
55	99-2HB-2B-1	WILL	756	98
CONTRACT NO. 60F12				FED. ROAD DIST. NO. 1 ILLINOIS FED. AID PROJECT

**FINAL**