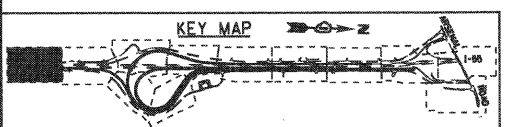
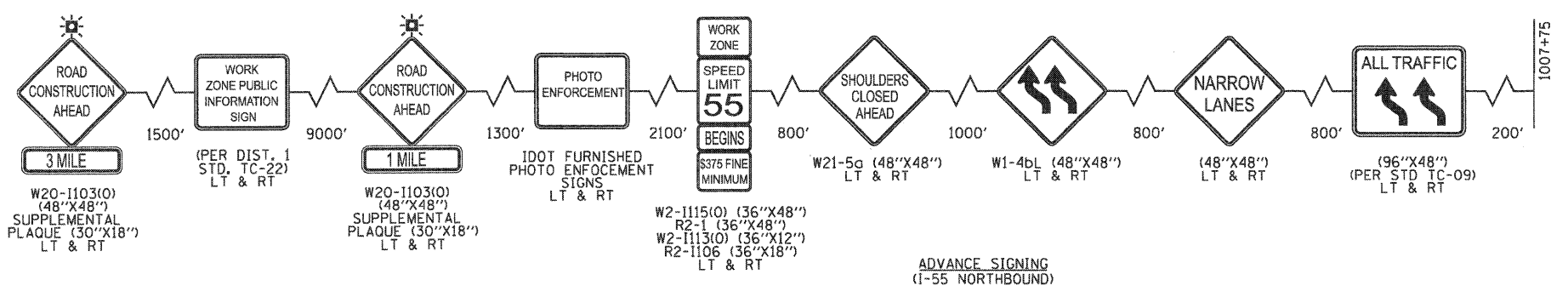
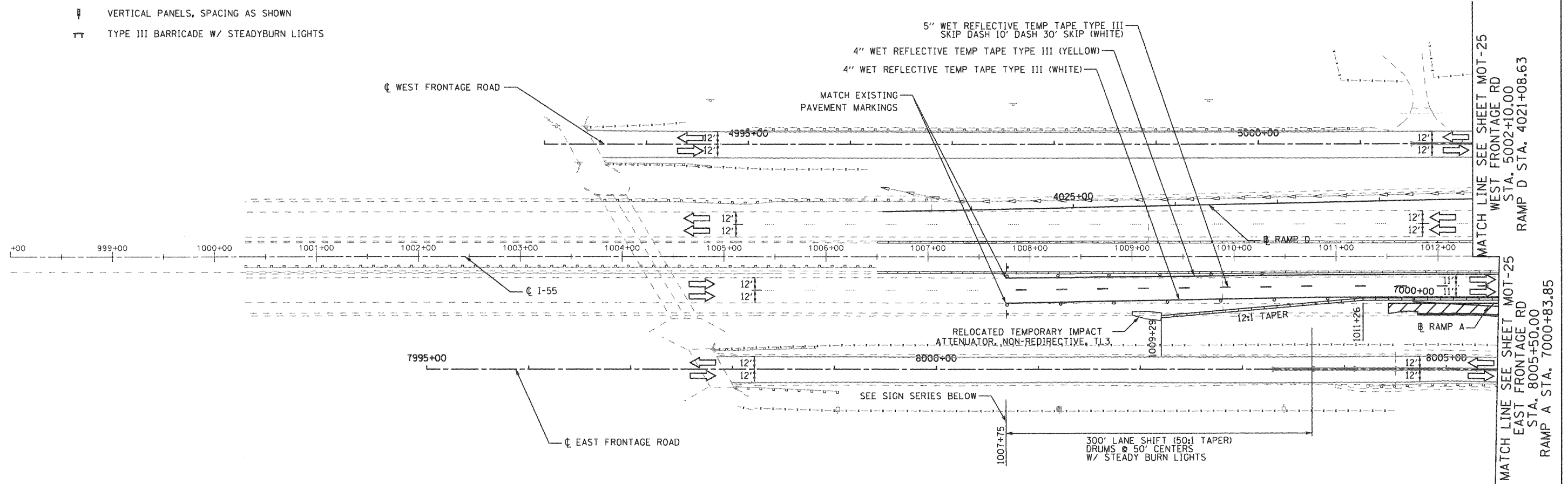




MAINTENANCE OF TRAFFIC LEGEND

- WORK ZONE (CURRENT STAGE)
- WORK ZONE (CONTD. FROM PREVIOUS STAGE)
- DIRECTION OF TRAFFIC
- PLASTIC DRUMS, SPACING AS SHOWN
- TEMPORARY PAVEMENT (INSTALLED IN CURRENT STAGE)
- TEMPORARY PAVEMENT (INSTALLED IN PREVIOUS STAGE)
- ARROW BOARD
- TEMPORARY IMPACT ATTENUATOR, TL 3
- TEMP. CONC. BARRIER W/ PRISMATIC REFLECTORS @ 25 FT CTRS.
- VERTICAL PANELS, SPACING AS SHOWN
- TYPE III BARRICADE W/ STEADYBURN LIGHTS

ACCESS TO EXPRESSWAY WORK ZONES:
 CONTRACTOR SHALL PROVIDE ACCESS TO WORK ZONES ALONG OUTSIDE SHOULDERS OF I-55 FROM EAST FRONTAGE ROAD, ARSENAL ROAD, AND WEST FRONTAGE CONNECTOR. INSTALLATION AND MAINTENANCE OF CONTRACTOR ACCESS SHALL BE INCIDENTAL TO TRAFFIC CONTROL AND PROTECTION PAY ITEM. ACCESS TO WORK ZONES ALONG OUTSIDE SHOULDERS OF I-55 SHALL NOT BE ALLOWED FROM THE EXPRESSWAY.



EJM ENGINEERING, INC.
 411 South Wells Street Suite 800
 Chicago, Illinois 60607



FILE NAME = ...ND160F12-SHT-STAGING201.dgn	USER NAME = gr01	DESIGNED - GR	REVISED -	STATE OF ILLINOIS DEPARTMENT OF TRANSPORTATION	MAINTENANCE OF TRAFFIC STAGE 2	F.A.I RTE. 55	SECTION 99-2HB-2B-1	COUNTY WILL	TOTAL SHEETS 756	SHEET NO. 110
PLOT SCALE = 1:50	CHECKED - RY	DRAWN - GR	REVISED -	SCALE: 1"=50' SHEET NO. 1 OF 12 SHEETS STA. TO STA.		CONTRACT NO. 60F12				
PLOT DATE = 2/2/2011	DATE - 02/04/2011	REVISI	REVISED -			FED. ROAD DIST. NO. 1 ILLINOIS FED. AID PROJECT				

FINAL