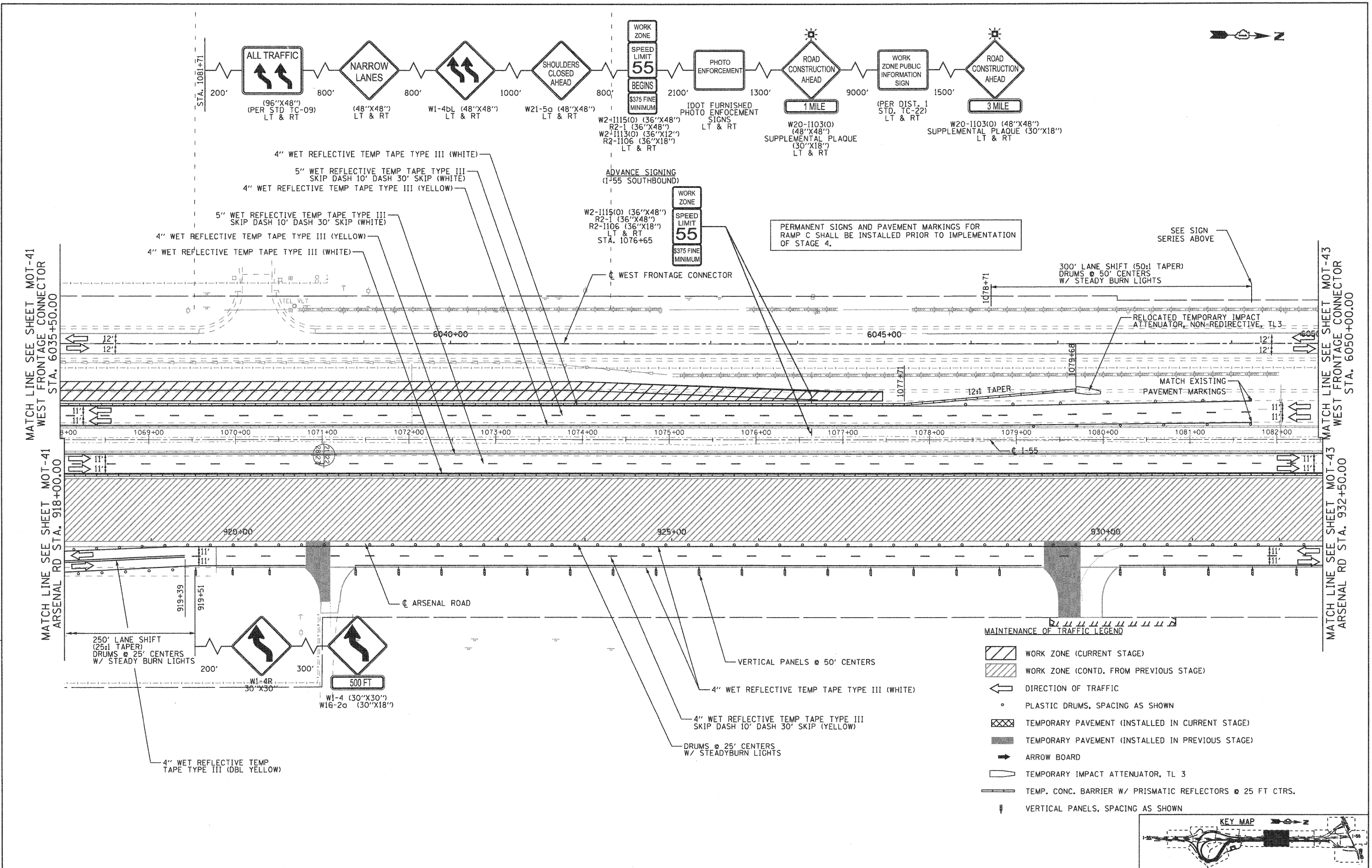
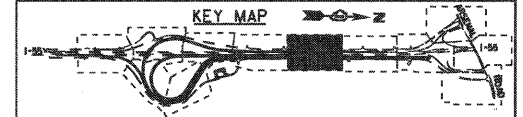


**EJM ENGINEERING, INC.**  
 411 South Wells Street Suite 800  
 Chicago, Illinois 60607



- MAINTENANCE OF TRAFFIC LEGEND**
- WORK ZONE (CURRENT STAGE)
  - WORK ZONE (CONTD. FROM PREVIOUS STAGE)
  - DIRECTION OF TRAFFIC
  - PLASTIC DRUMS, SPACING AS SHOWN
  - TEMPORARY PAVEMENT (INSTALLED IN CURRENT STAGE)
  - TEMPORARY PAVEMENT (INSTALLED IN PREVIOUS STAGE)
  - ARROW BOARD
  - TEMPORARY IMPACT ATTENUATOR, TL 3
  - TEMP. CONC. BARRIER W/ PRISMATIC REFLECTORS @ 25 FT CTRS.
  - VERTICAL PANELS, SPACING AS SHOWN



FILE NAME = ...ND160F12-SHT-STAGING309.dgn	USER NAME = gr01	DESIGNED - GR	REVISED -
		DRAWN - GR	REVISED -
		CHECKED - RY	REVISED -
		DATE - 02/04/2011	REVISED -

**STATE OF ILLINOIS  
 DEPARTMENT OF TRANSPORTATION**

**MAINTENANCE OF TRAFFIC  
 STAGE 3**

SCALE: 1"=50'    SHEET NO. 7 OF 12 SHEETS    STA.    TO STA.

F.A.I. RTE. 55	SECTION 99-2HB-2B-1	COUNTY WILL	TOTAL SHEETS 756	SHEET NO. 128
CONTRACT NO. 60F12			ILLINOIS FED. AID PROJECT	

**FINAL**