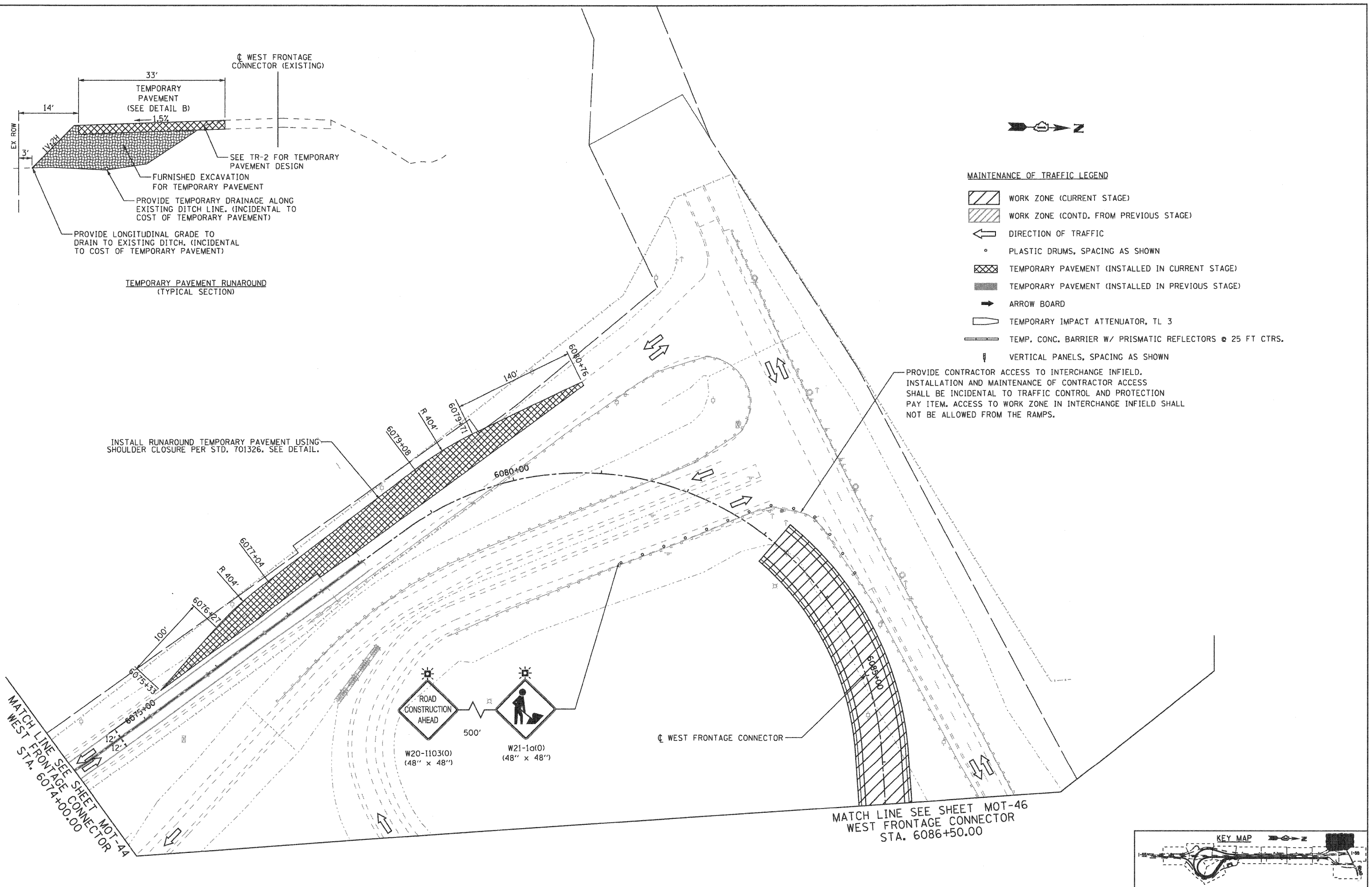


TEMPORARY PAVEMENT RUNAROUND (TYPICAL SECTION)

- MAINTENANCE OF TRAFFIC LEGEND**
- WORK ZONE (CURRENT STAGE)
  - WORK ZONE (CONTD. FROM PREVIOUS STAGE)
  - DIRECTION OF TRAFFIC
  - PLASTIC DRUMS, SPACING AS SHOWN
  - TEMPORARY PAVEMENT (INSTALLED IN CURRENT STAGE)
  - TEMPORARY PAVEMENT (INSTALLED IN PREVIOUS STAGE)
  - ARROW BOARD
  - TEMPORARY IMPACT ATTENUATOR, TL 3
  - TEMP. CONC. BARRIER W/ PRISMATIC REFLECTORS @ 25 FT CTRS.
  - VERTICAL PANELS, SPACING AS SHOWN

PROVIDE CONTRACTOR ACCESS TO INTERCHANGE INFIELD. INSTALLATION AND MAINTENANCE OF CONTRACTOR ACCESS SHALL BE INCIDENTAL TO TRAFFIC CONTROL AND PROTECTION PAY ITEM. ACCESS TO WORK ZONE IN INTERCHANGE INFIELD SHALL NOT BE ALLOWED FROM THE RAMPS.

INSTALL RUNAROUND TEMPORARY PAVEMENT USING SHOULDER CLOSURE PER STD. 701326. SEE DETAIL.



MATCH LINE SEE SHEET MOT-44 WEST STA. 6074+00.00

MATCH LINE SEE SHEET MOT-46 WEST FRONTAGE CONNECTOR STA. 6086+50.00

**EJM ENGINEERING, INC.**  
411 South Wells Street Suite 800  
Chicago, Illinois 60607



FILE NAME = ...ND160F12-SHT-STAGING312.dgn

USER NAME = grot  
DESIGNED - GR  
DRAWN - GR  
CHECKED - RY  
DATE - 02/04/2011

REVISED -  
REVISED -  
REVISED -  
REVISED -

**STATE OF ILLINOIS  
DEPARTMENT OF TRANSPORTATION**

**MAINTENANCE OF TRAFFIC  
STAGE 3**

SCALE: 1"=50' SHEET NO. 10 OF 12 SHEETS STA. TO STA.

F.A.I. RTE.	SECTION	COUNTY	TOTAL SHEETS	SHEET NO.
55	99-2HB-2B-1	WILL	756	131
FED. ROAD DIST. NO. 1 ILLINOIS FED. AID PROJECT			CONTRACT NO. 60F12	