



MATCH LINE SEE SHEET MOT-60  
ARSENAL RD STA. 9070+50.00

4" WET REFLECTIVE TEMP  
TAPE TYPE III  
(DOUBLE YELLOW CENTERLINE)

4" WET REFLECTIVE TEMP  
TAPE TYPE III (WHITE)

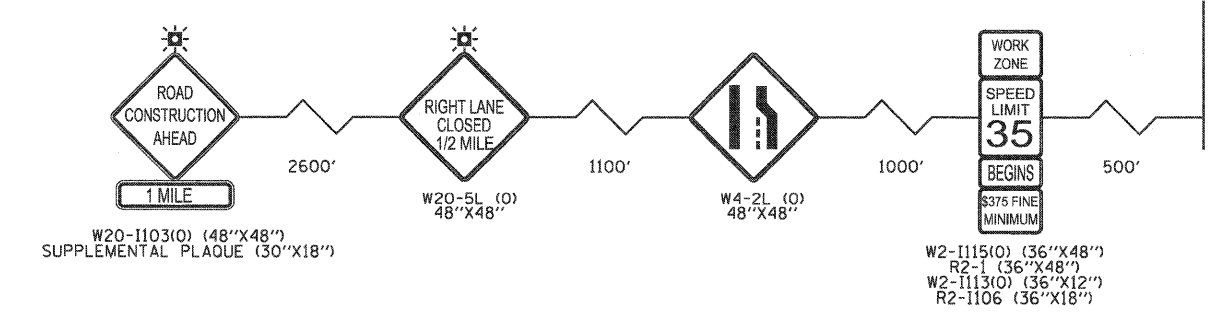
DRUMS @ 25' CENTERS W/ STEADYBURN LIGHTS

COMPLETE CONSTRUCTION OF RAISED  
CURB AND MEDIAN AFTER COMPLETION  
OF STAGE 4D USING STD. 701601.

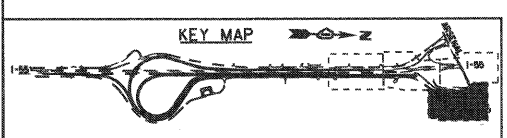
MATCH EXISTING  
PAVEMENT MARKINGS.  
SEE SIGN SERIES.

**MAINTENANCE OF TRAFFIC LEGEND**

- WORK ZONE (CURRENT STAGE)
- WORK ZONE (CONTD. FROM PREVIOUS STAGE)
- DIRECTION OF TRAFFIC
- PLASTIC DRUMS, SPACING AS SHOWN
- TEMPORARY PAVEMENT (INSTALLED IN CURRENT STAGE)
- TEMPORARY PAVEMENT (INSTALLED IN PREVIOUS STAGE)
- ARROW BOARD
- TEMPORARY IMPACT ATTENUATOR, TL 3
- TEMP. CONC. BARRIER W/ PRISMATIC REFLECTORS @ 25 FT CTRS.
- VERTICAL PANELS, SPACING AS SHOWN



WESTBOUND ARSENAL ROAD  
(ADVANCE WORK ZONE & LANE CLOSURE SIGNS)



**EJM ENGINEERING, INC.**  
411 South Wells Street Suite 800  
Chicago, Illinois 60607



FILE NAME = ...ND160F12-SHT-STAGING4D14.dgn	USER NAME = grs	DESIGNED - GR	REVISED -
		DRAWN - GR	REVISED -
		CHECKED - RY	REVISED -
		DATE - 02/04/2011	REVISED -

**STATE OF ILLINOIS  
DEPARTMENT OF TRANSPORTATION**

**MAINTENANCE OF TRAFFIC  
STAGE 4D**

SCALE: 1"=50' SHEET NO. 4 OF 4 SHEETS STA. TO STA.

P.A. I RTE. 55	SECTION 99-2HB-2B-1	COUNTY WILL	TOTAL SHEETS 756	SHEET NO. 147
FED. ROAD DIST. NO. 1 ILLINOIS FED. AID PROJECT			CONTRACT NO. 60F12	