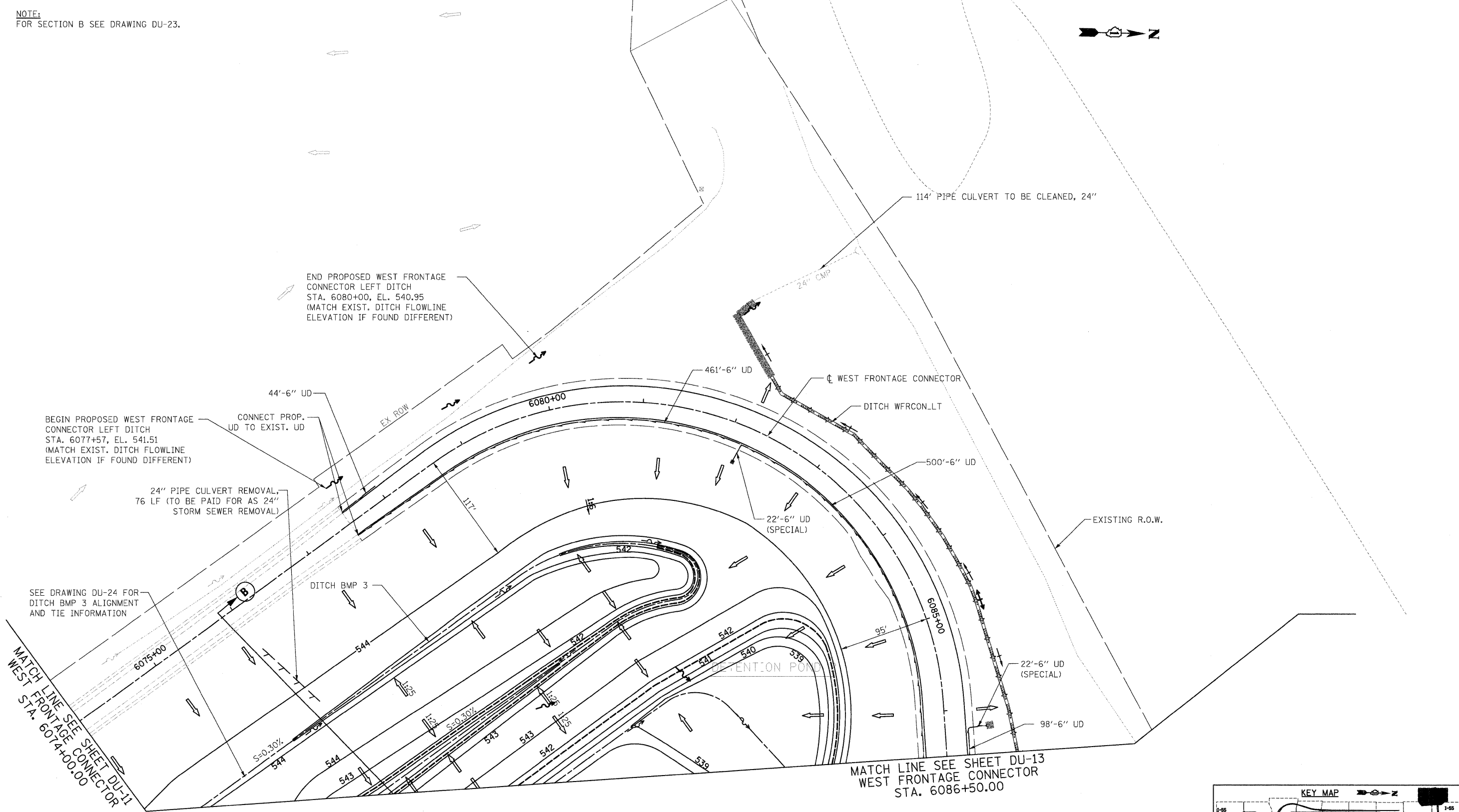
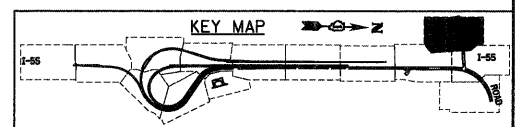


NOTE:
FOR SECTION B SEE DRAWING DU-23.



SINGH
 300 W. ADAMS ST.
 CHICAGO, IL 60606
 SINGH & ASSOCIATES, INC.
 CONSULTING ENGINEERS



FILE NAME = D:\60F12-SHT-DRAIN\2.dgn	USER NAME = TKluegel	DESIGNED - PKT	REVISED -	STATE OF ILLINOIS DEPARTMENT OF TRANSPORTATION	DRAINAGE AND UTILITY PLAN	F.A.I. RTE. 55	SECTION 99-2HB-2B-1	COUNTY WILL	TOTAL SHEETS 756	SHEET NO. 178	
	PLOT SCALE = 1:50	DRAWN - VP	REVISED -			SCALE: 1"=50'		SHEET NO. 12 OF 25 SHEETS		CONTRACT NO. 60F12	
	PLOT DATE = 2/3/2011	CHECKED - CL	REVISED -			STA. TO STA.		FED. ROAD DIST. NO. 1 ILLINOIS FED. AID PROJECT			
		DATE = 2/4/11	REVISED -								