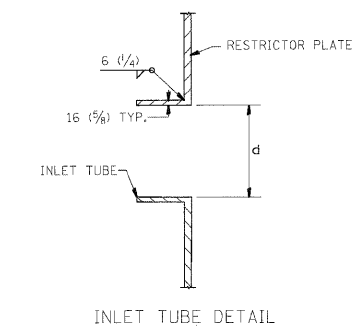


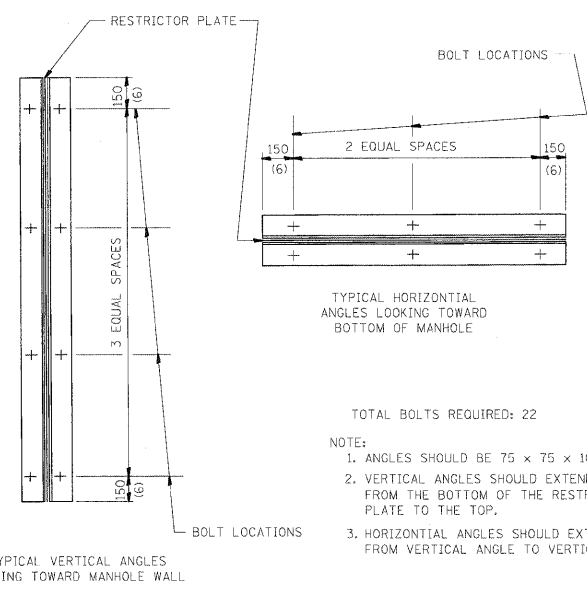
- NOTES:
- ALL STEEL ANGLES AND PLATES TO BE GALVANIZED AFTER FABRICATION.
  - ALL RESTRICTOR PLATES, ANGLES AND HARDWARE TO BE INCLUDED IN THE COST OF THE MANHOLE.
  - BASIS OF PAYMENT: "MANHOLES, TYPE A, 1.8M (6FT.) DIAMETER, TYPE 1 FRAME, CLOSED LID, RESTRICTOR PLATE" EACH



SECTION C-C  
STRUCTURE S274  
POND 2

STRUCTURE NUMBER	STATION/OFFSET	MANHOLE DIAMETER	FRAME AND GRATE	RESTRICTOR TYPE	INSIDE LOWER RESTRICTOR DIAMETER OR SIZE (in.) (d)	INVERT OF LOWER RESTRICTOR	INSIDE UPPER RESTRICTOR DIAMETER OR SIZE (in.) (d)	INVERT OF UPPER RESTRICTOR	ELEVATION OF TOP OF PLATE OVERFLOW
S274 POND 2	6086+83, 119' RT.	7'	2 TY 1F CL	5	9.50	538.00	4-13.00	540.25	541.50

NOTE: ALL RESTRICTOR SHAPES ARE ROUND, UNLESS NOTED OTHERWISE.



- TOTAL BOLTS REQUIRED: 22
- NOTE:
- ANGLES SHOULD BE 75 x 75 x 10 (3x3x3/8)
  - VERTICAL ANGLES SHOULD EXTEND FROM THE BOTTOM OF THE RESTRICTOR PLATE TO THE TOP.
  - HORIZONTAL ANGLES SHOULD EXTEND FROM VERTICAL ANGLE TO VERTICAL ANGLE.

RESTRICTOR TYPE					
1	2	3	4	5	6
RE-ENTRANT TUBE	SHARP EGED	SQUARE EGED	RE-ENTRANT TUBE	SQUARE EGED	ROUNDED
LENGTH: 1/2 TO 1 DIA.		STREAM CLEARS SIDES	LENGTH: 2-1/2 DIA.	LENGTH: 2-1/2 DIA.	
C=.52	C=.61	C=.61	C=.73	C=.82	C=.98

VALUES OF "C" FOR CIRCULAR AND SQUARE ORIFICES

ALL DIMENSIONS ARE IN MILLIMETERS (INCHES) UNLESS OTHERWISE SHOWN.

REVISIONS	
NAME	DATE
R. SHAH	09/09/94
R. SHAH	10/25/94
E. GOMEZ	08/28/00
M. GOMEZ	01/08/01

ILLINOIS DEPARTMENT OF TRANSPORTATION

**MANHOLE WITH RESTRICTOR PLATE**

SCALE: NONE  
DATE \*\*DATE\*\*

DRAWN BY  
CHECKED BY  
BD600-04 (BD-12)

SINGH  
300 W. ADAMS ST.  
CHICAGO, IL 60606  
SINGH & ASSOCIATES, INC.  
CONSULTING ENGINEERS  
TEL: (312) 629-0240  
FAX: (312) 629-8449

FILE NAME = D:\60F12-SH-DRAIN22.dgn	USER NAME = TKluegal	DESIGNED - PKT	REVISED -
PLOT SCALE = 1/8"=1'		DRAWN - PKT	REVISED -
PLOT DATE = 2/3/2011		CHECKED - CL	REVISED -
		DATE - 2/4/11	REVISED -

STATE OF ILLINOIS  
DEPARTMENT OF TRANSPORTATION

RESTRICTOR MANHOLE DETAIL	
SCALE: NONE	SHEET NO. 22 OF 25 SHEETS
STA.	TO STA.

F.A.I. RTE.	SECTION	COUNTY	TOTAL SHEETS	SHEET NO.
55	99-2HB-2B-1	WILL	756	188
CONTRACT NO. 60F12				
FED. ROAD DIST. NO. 1 ILLINOIS FED. AID PROJECT				