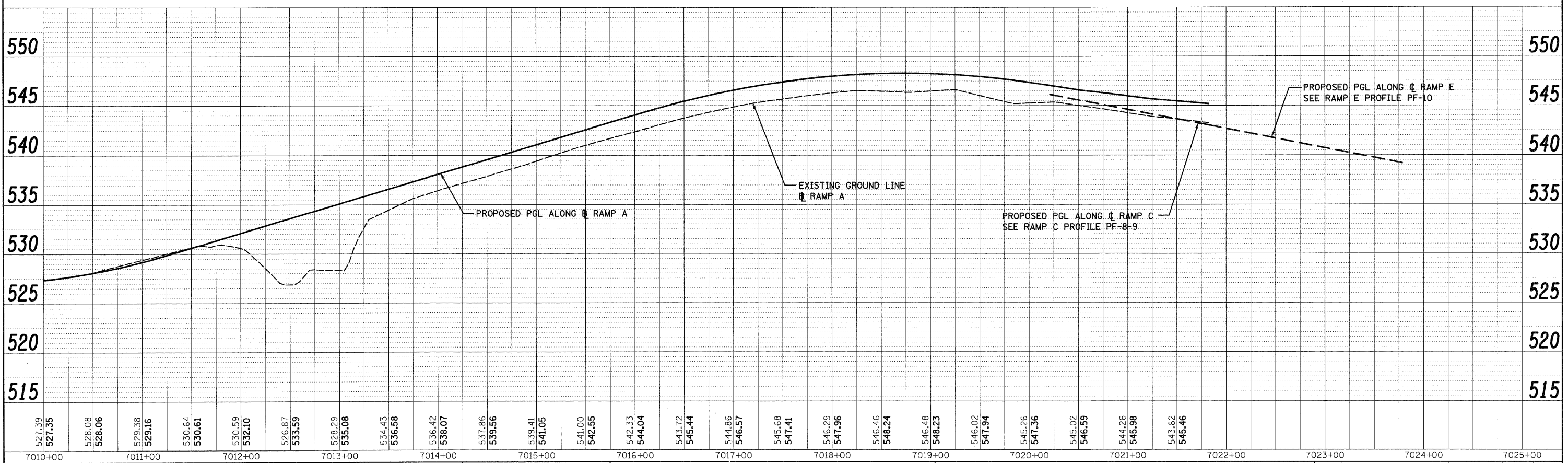
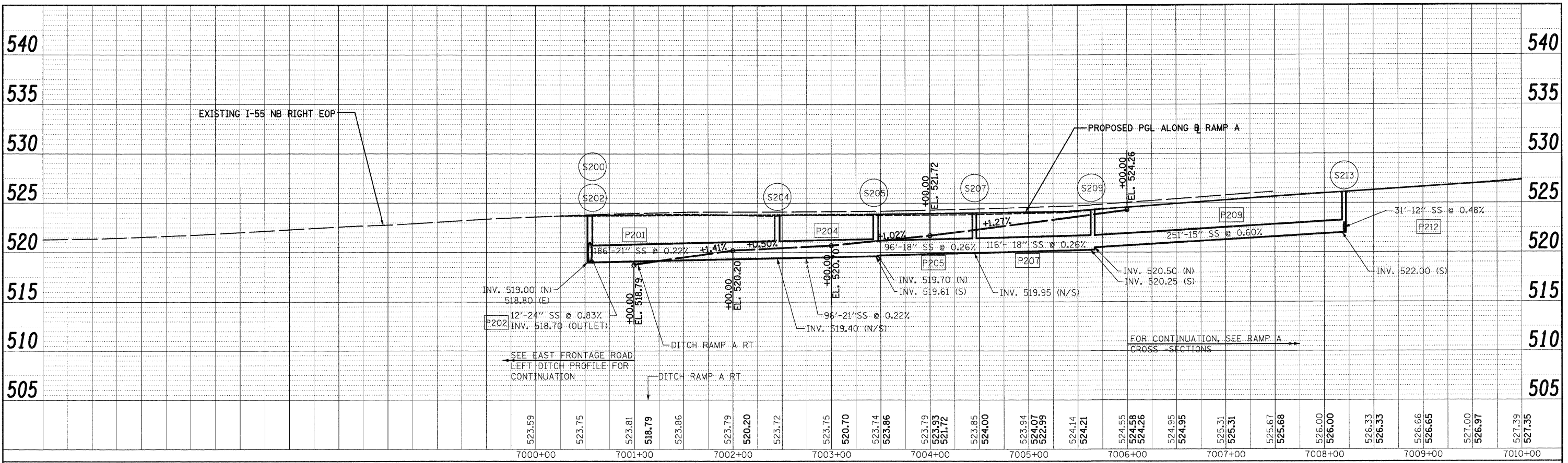


DATE	
BY	
REVIEWED	
PROPOSED	
ALIGNMENT	
GRADES	
CHECKED	
NOTE BOOK	
NO.	
PLAN	
NO.	

DATE	
BY	
REVIEWED	
PROPOSED	
ALIGNMENT	
GRADES	
CHECKED	
NOTE BOOK	
NO.	
PROFILE	
NO.	

300 W. ADAMS ST.
CHICAGO, IL 60606
SINGH & ASSOCIATES, INC.
CONSULTING ENGINEERS
TEL: (312) 629-0240
FAX: (312) 629-8449



FILE NAME =	USER NAME = TKluegel	DESIGNED - PKT	REVISED -	STATE OF ILLINOIS DEPARTMENT OF TRANSPORTATION	RAMP A DRAINAGE PROFILE	F.A.I. RTE.	SECTION	COUNTY	TOTAL SHEETS	SHEET NO.
D16BF12-SHT-DRAINPROFL07.dgn		DRAWN - PKT	REVISED -			55	99-2HB-2B-1	WILL	756	196
PLOT SCALE = 1/50		CHECKED - CL	REVISED -			CONTRACT NO. 60F12				
PLOT DATE = 2/3/2011		DATE - 2/4/11	REVISED -			FED. ROAD DIST. NO. 1 ILLINOIS FED. AID PROJECT				

SCALE: 1"=50' HORIZ. 1"=5' V. SHEET NO. 7 OF 14 SHEETS STA. TO STA.