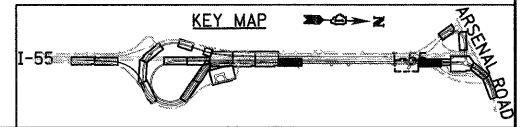
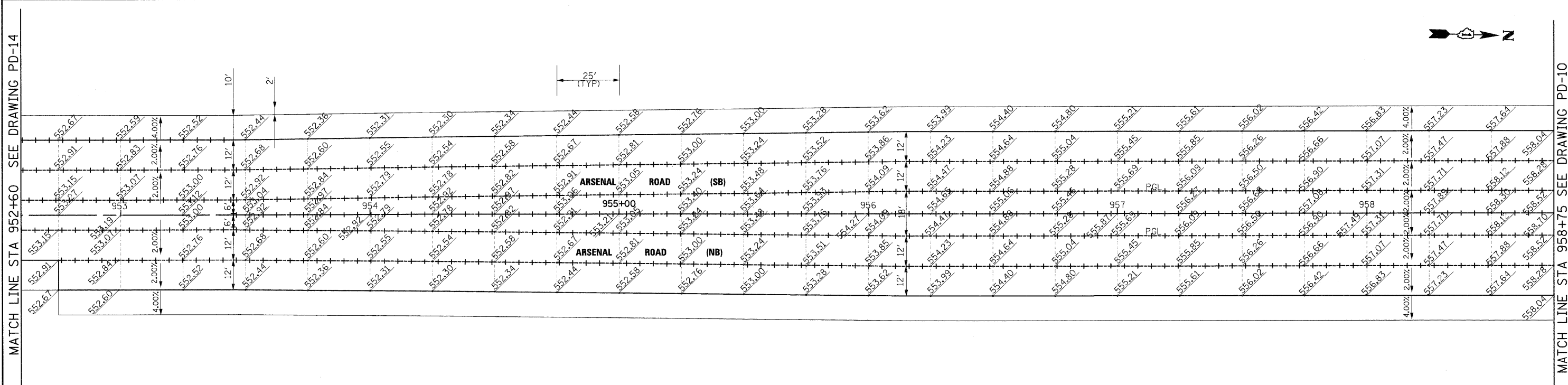


- NOTES**
- ELEVATIONS ARE FOR INFORMATION ONLY CONTRACTOR SHALL VERIFY ALL ELEVATIONS PRIOR TO CONSTRUCTION.
 - REFER TO STANDARDS 420001, 420101, 420106, 420201 AND 420401 FOR JOINT DETAILS AND SPACING.
 - RAMP C PAVEMENT JOINTS SHALL ALIGN WITH ANCHORAGE SLAB JOINTS ON MSE WALLS #027 AND #028. SEE STRUCTURAL PLANS FOR LOCATIONS.
 - SEE DRAINAGE AND UTILITY PLAN SHEETS FOR MORE INFORMATION ON LOCATIONS OF PROPOSED DRAINAGE STRUCTURES.



FILE NAME = D:\B\F12-SHT-DETAILS-PAVEMEN\09.dgn	USER NAME = TKLuegel	DESIGNED - JTF	REVISED -
PLOT SCALE = 1:20	CHECKED - DLT	REVISED -	REVISED -
PLOT DATE = 2/3/2011	DATE - 2/4/11	REVISED -	REVISED -

**STATE OF ILLINOIS
 DEPARTMENT OF TRANSPORTATION**

PAVEMENT DETAILS	
SCALE: 1"=20'	SHEET NO. 1 OF 8 SHEETS
STA. _____	TO STA. _____

F.A.I. RTE. 55	SECTION 99-2HB-2B-1	COUNTY WILL	TOTAL SHEETS 756	SHEET NO. 261
CONTRACT NO. 60F12				
FED. ROAD DIST. NO. 1 ILLINOIS FED. AID PROJECT				