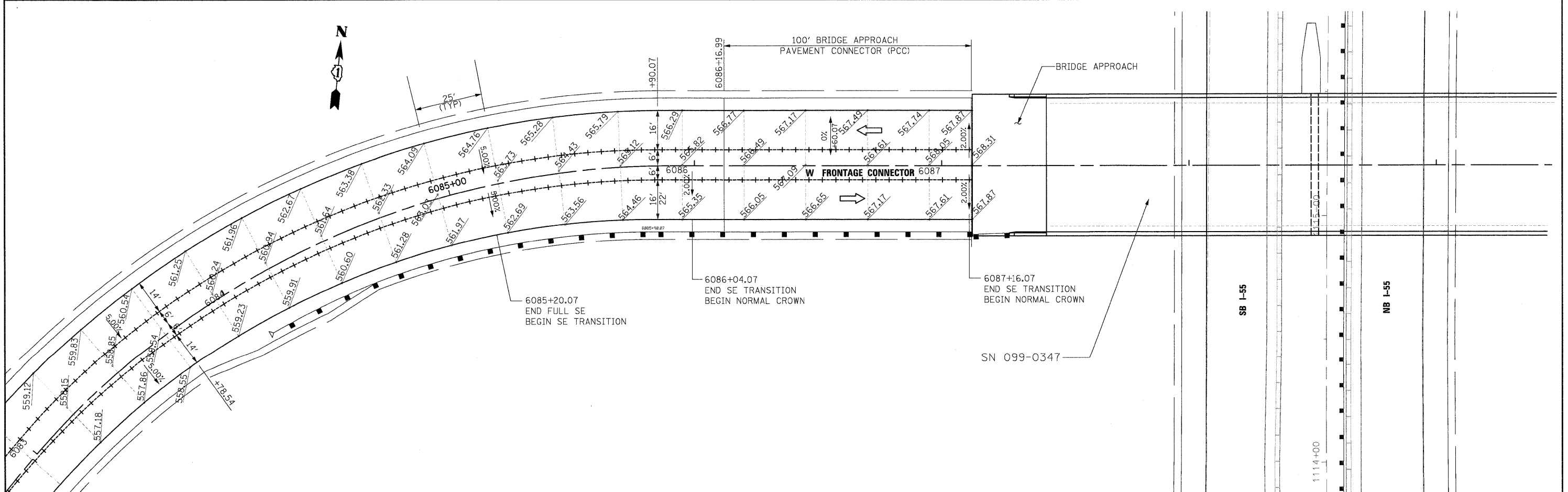
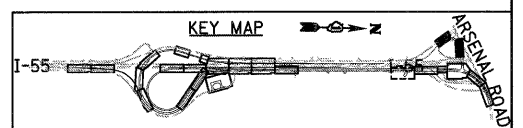


- NOTES**
1. ELEVATIONS ARE FOR INFORMATION ONLY CONTRACTOR SHALL VERIFY ALL ELEVATIONS PRIOR TO CONSTRUCTION.
 2. REFER TO STANDARDS 420001, 420101, 420106, 420201 AND 420401 FOR JOINT DETAILS AND SPACING.
 3. RAMP C PAVEMENT JOINTS SHALL ALIGN WITH ANCHORAGE SLAB JOINTS ON MSE WALLS #027 AND #028. SEE STRUCTURAL PLANS FOR LOCATIONS.
 4. SEE DRAINAGE AND UTILITY PLAN SHEETS FOR MORE INFORMATION ON LOCATIONS OF PROPOSED DRAINAGE STRUCTURES.



McDonough Associates Inc.
 Engineers / Architects
 130 East Randolph Street, Chicago, Illinois 60601

| | | | |
|---|----------------------|----------------|-----------|
| FILE NAME = D162P12-SHT-DETAILS-PAVEMENT12.dgn | USER NAME = TKluegel | DESIGNED - JTF | REVISED - |
| PLOT SCALE = 1:20 | CHECKED - DLT | DRAWN - JTF | REVISED - |
| PLOT DATE = 2/3/2011 | DATE - 2/4/11 | | REVISED - |

**STATE OF ILLINOIS
 DEPARTMENT OF TRANSPORTATION**

PAVEMENT DETAILS

SCALE: 1"=20' SHEET NO. 1 OF 8 SHEETS STA. TO STA.

| | | | | |
|---|------------------------|----------------|---------------------|------------------|
| F.A.T. RTE. 55 | SECTION 99-2HB-2B-1 | COUNTY WILL | TOTAL SHEETS 756 | SHEET NO. 264 |
| CONTRACT NO. 60F12 | | | | |
| FED. ROAD DIST. NO. 1 ILLINOIS FED. AID PROJECT | | | | |