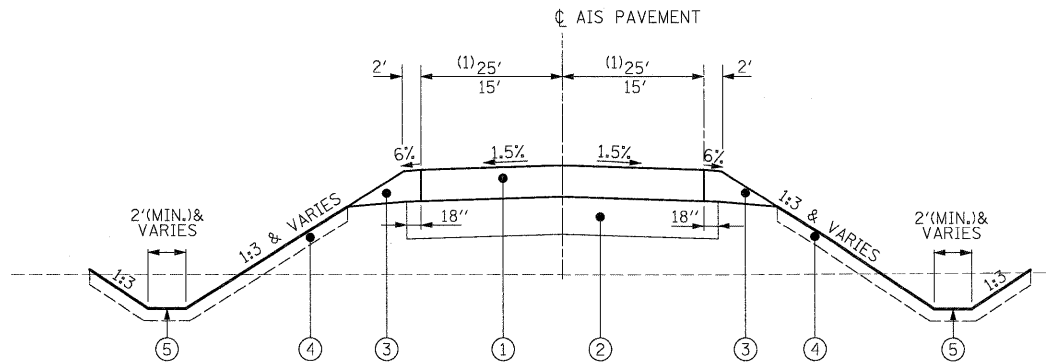


NOTES

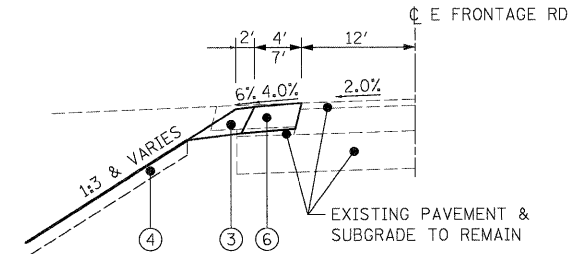
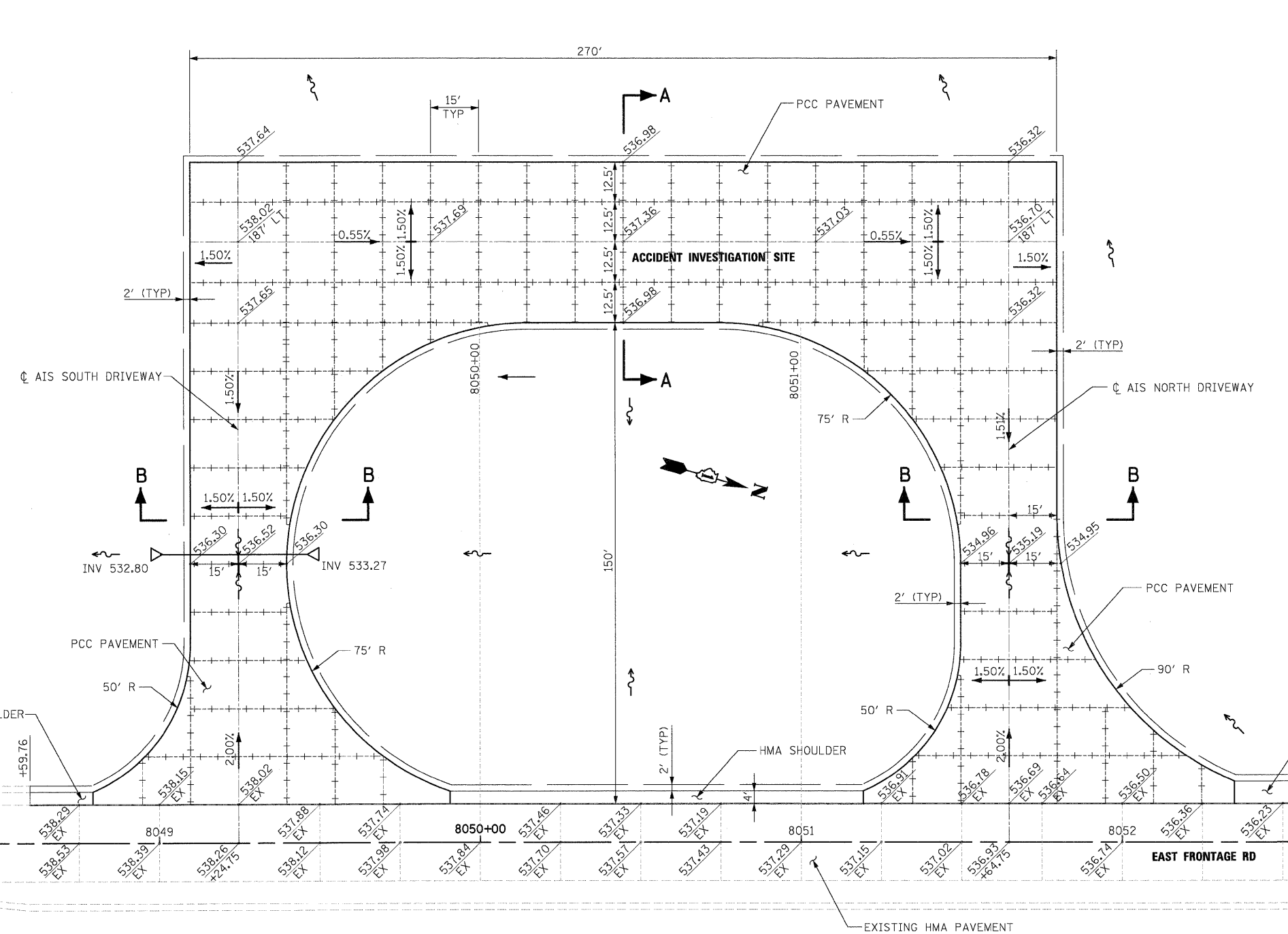
- ELEVATIONS ARE FOR INFORMATION ONLY CONTRACTOR SHALL VERIFY ALL ELEVATIONS PRIOR TO CONSTRUCTION.
- REFER TO STANDARDS 420001, 420101, 420106, 420201 AND 420401 FOR JOINT DETAILS AND SPACING.
- RAMP C PAVEMENT JOINTS SHALL ALIGN WITH ANCHORAGE SLAB JOINTS ON MSE WALLS #027 AND #028. SEE STRUCTURAL PLANS FOR LOCATIONS.
- SEE DRAINAGE AND UTILITY PLAN SHEETS FOR MORE INFORMATION ON LOCATIONS OF PROPOSED DRAINAGE STRUCTURES.



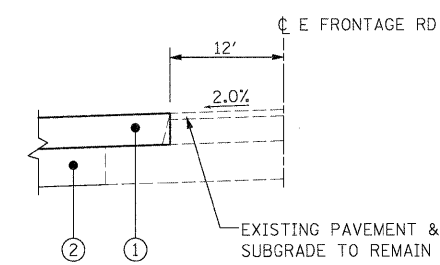
PROPOSED TYPICAL SECTION ACCIDENT INVESTIGATION SITE
 (1) SECTION A-A (25' & VAR.)
 SECTION B-B (15' & VAR.)

PROPOSED LEGEND

- PORTLAND CEMENT CONCRETE PAVEMENT 10" (JOINTED)
- AGGREGATE SUBGRADE 12"
- AGGREGATE SHOULDERS, TYPE B 8"
- TOPSOIL FURNISH AND PLACE, 4"
- PROPOSED DRAINAGE DITCH
- HOT-MIX ASPHALT SHOULDERS, 8" (IN 3 LIFTS)



TYPICAL SECTION - EAST FRONTAGE ROAD
 STA. 8048+59.755 TO STA. 8052+69.75



TYPICAL SECTION - EAST FRONTAGE ROAD (ENTRANCE)
 STA. 8048+59.755 TO STA. 8052+69.75



McDonough Associates Inc.
 Engineers / Architects
 130 East Randolph Street, Chicago, Illinois 60601

FILE NAME = D:\60F12-SHT-DETAILS-PAVEMENT13.dgn
 USER NAME = TKluogal
 PLOT SCALE = 1:20
 PLOT DATE = 2/3/2011

DESIGNED - JTF	REVISD -
DRAWN - JTF	REVISD -
CHECKED - DLT	REVISD -
DATE - 2/4/11	REVISD -

**STATE OF ILLINOIS
 DEPARTMENT OF TRANSPORTATION**

PAVEMENT DETAILS
 SCALE: 1"=20'
 SHEET NO. 8 OF 8 SHEETS
 STA. TO STA.

F.A.I. RTE.	SECTION	COUNTY	TOTAL SHEETS	SHEET NO.
55	99-2HB-2B-1	WILL	756	265
CONTRACT NO. 60F12			FED. ROAD DIST. NO. 1 ILLINOIS FED. AID PROJECT	