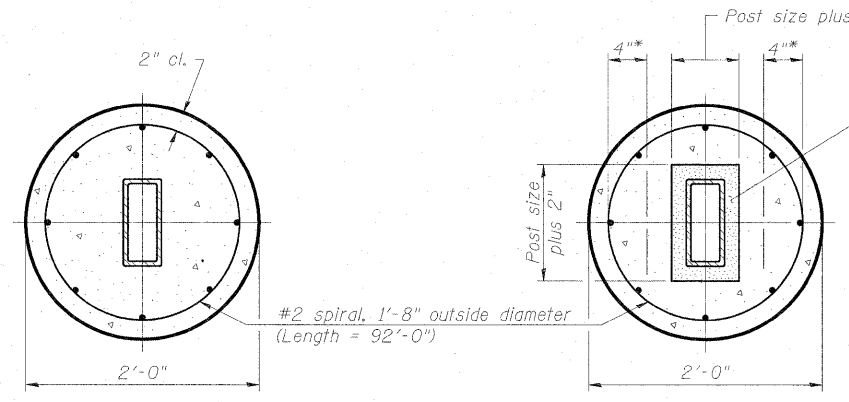


FRONT ELEVATION

SIDE ELEVATION

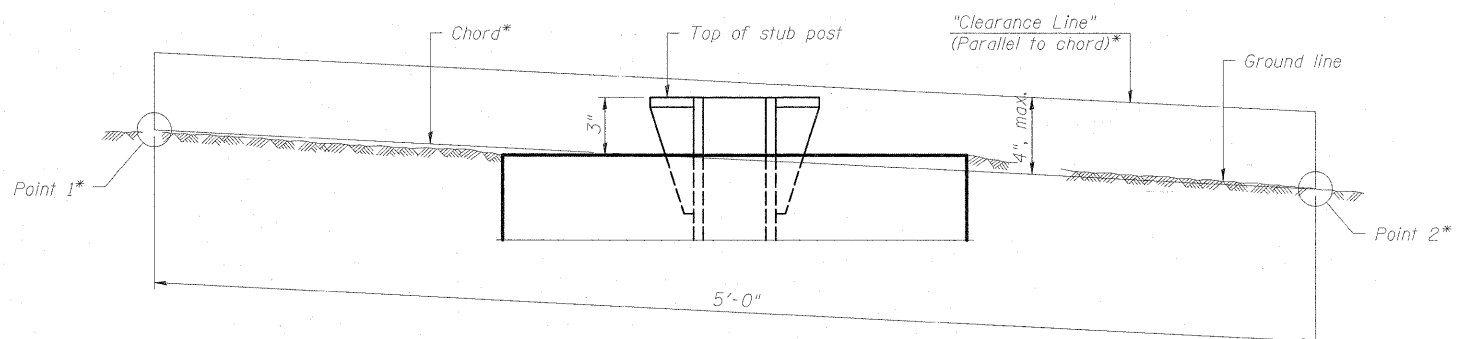
MAIN POST & STUB POST



SECTION A-A (CAST-IN-PLACE)

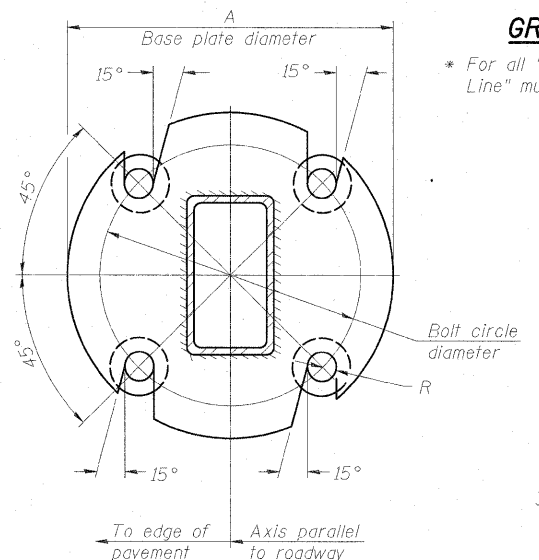
SECTION A-A (PRECAST)

* Hot dip galvanized lifting loops or inserts may be placed in precast foundation inside the spiral reinforcement but, not within 6" of the long axis of the post. Inserts must be adequate for safely lifting a total of 3,000 pounds and must not interfere with installation of the stub post or proper functioning of the slip base.

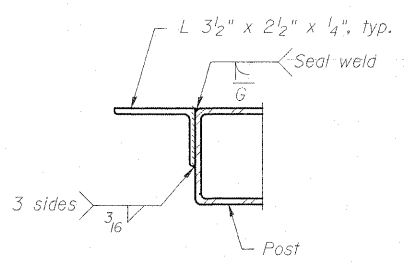


ELEVATION GROUND LINE & STUB POST

* For all "Point 1" and "Point 2" locations, "Clearance Line" must be at or above top of stub post.

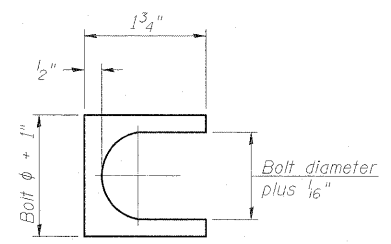


SECTION B-B



SECTION C-C

Weld continuously around corners.



SHIM DETAIL

Furnish two 0.01" thick and two 0.03" thick stainless steel or brass (ASTM B36) shims per post.

NUMBER	REVISION	DATE

BREAK-AWAY TUBULAR STEEL SIGN POSTS AND DETAILS

(Sheet 2 of 2)

McDonough Associates Inc.
Engineers / Architects
130 East Randolph Street, Chicago, Illinois 60601

BAT-A-2

12-1-08

FILE NAME = U160F12-SHT-SIGNDTAIL10.dgn	USER NAME = TKluengel	DESIGNED - IDOT CELL	REVISED -
PLOT SCALE = 1:1	DATE = 2/4/11	DRAWN - IDOT CELL	REVISED -
PLOT DATE = 3/9/2011		CHECKED - IDOT CELL	REVISED -
		DATE = 2/4/11	REVISED -

**STATE OF ILLINOIS
DEPARTMENT OF TRANSPORTATION**

SCALE:	SHEET NO. OF SHEETS	STA. TO STA.	F.A.I. RTE. 55	SECTION 99-2HB-2B-1	COUNTY WILL	TOTAL SHEETS 756	SHEET NO. 314
			CONTRACT NO. 60F12				
FED. ROAD DIST. NO. 1 ILLINOIS FED. AID PROJECT							