

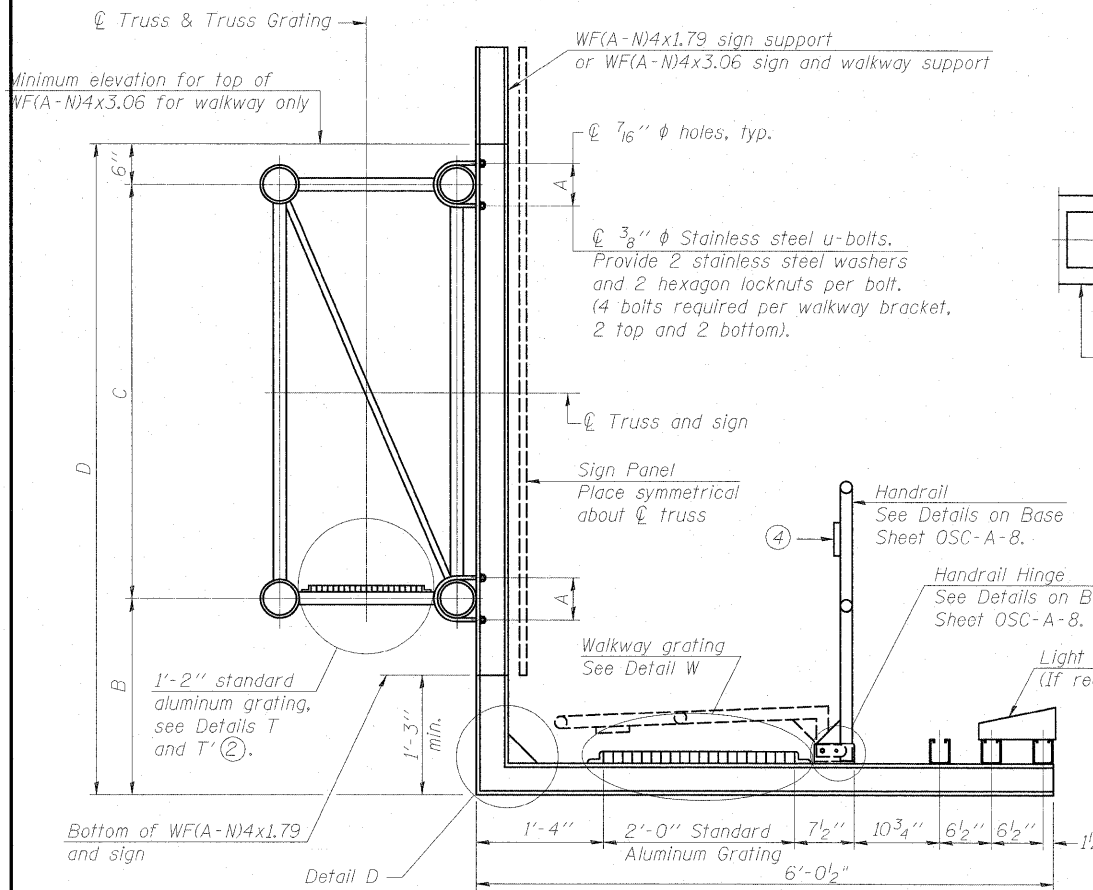
STATE OF ILLINOIS  
DEPARTMENT OF TRANSPORTATION

**SPECIFICATIONS FOR STANDARD ALUMINUM GRATING**

Main Bearing Bars (MBB) shall be  $\frac{3}{16}$ " x  $\frac{1}{2}$ " on  $1\frac{3}{16}$ " centers and conform to ASTM B211 Alloy 6061-T6.  
Cross bars (CB) shall be  $\frac{3}{16}$ " x  $\frac{1}{2}$ " on 4" centers and conform to ASTM B221 Alloy 6063-T5 or 6061-T6.

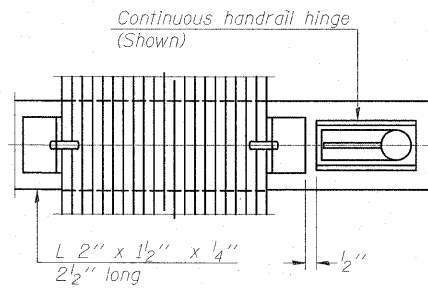
OR

Aluminum Grating with modified "T" sections for main bearing bars shall meet the following requirements:  
Main bars shall conform to ASTM B221 Alloy 6061-T6 and have a minimum section modulus equal to 0.0705 in.<sup>3</sup> per bar, a depth of  $\frac{1}{2}$ ", spaced on  $1\frac{3}{16}$ " centers.  
Cross bars shall conform to ASTM B221 Alloy 6063-T5 or T-42 and spaced on 4" centers.



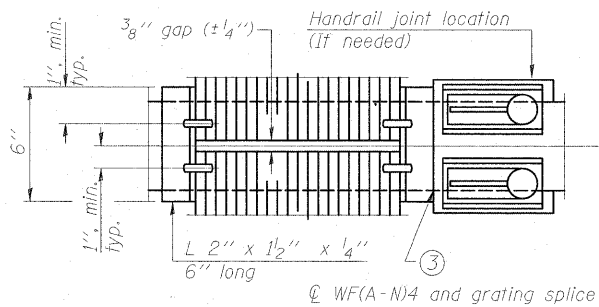
**SECTION B-B**

Sign shall be even with the top of the bracket, but it may extend no more than 6" above the top of the bracket for field adjustments.

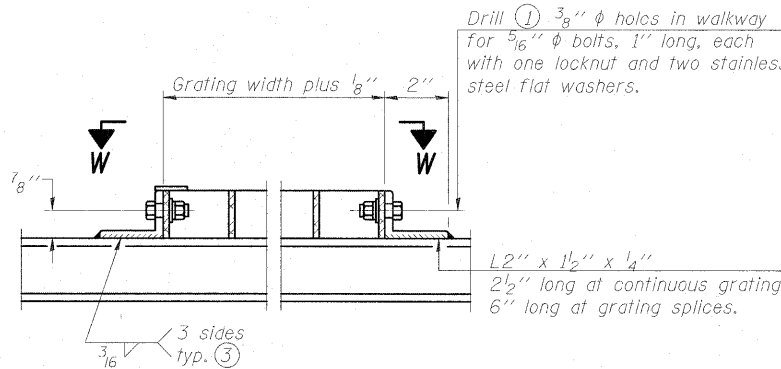


**(CONTINUOUS WALKWAY GRATING)**

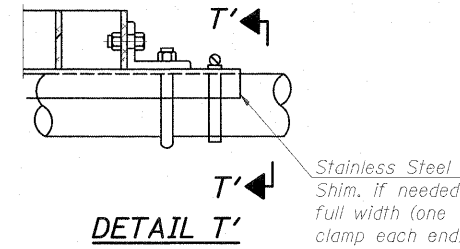
**SECTION W-W**



**(AT WALKWAY GRATING SPLICE)**

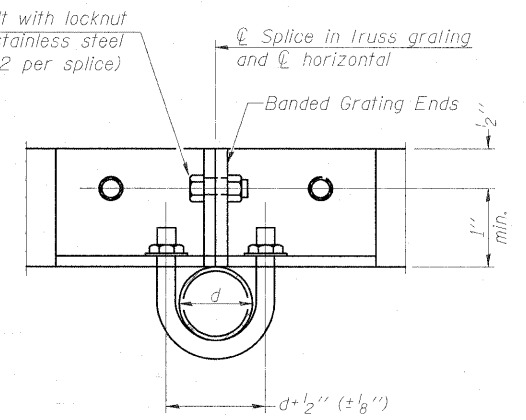


**DETAIL W**  
(Walkway grating)



**DETAIL T'**

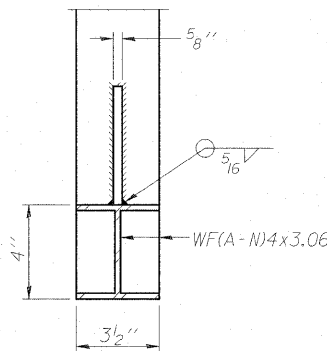
(Truss grating splice)  
Details not shown same as Detail T. Alternate materials may be used subject to the Engineer's review and approval.



**SECTION T'-T'**

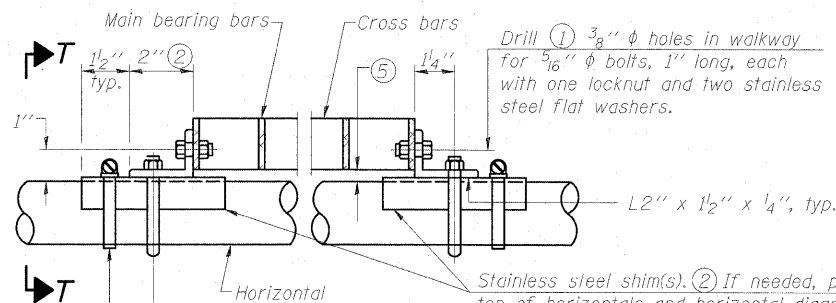
**ELEVATION END VIEW**

**SHIM DETAIL**



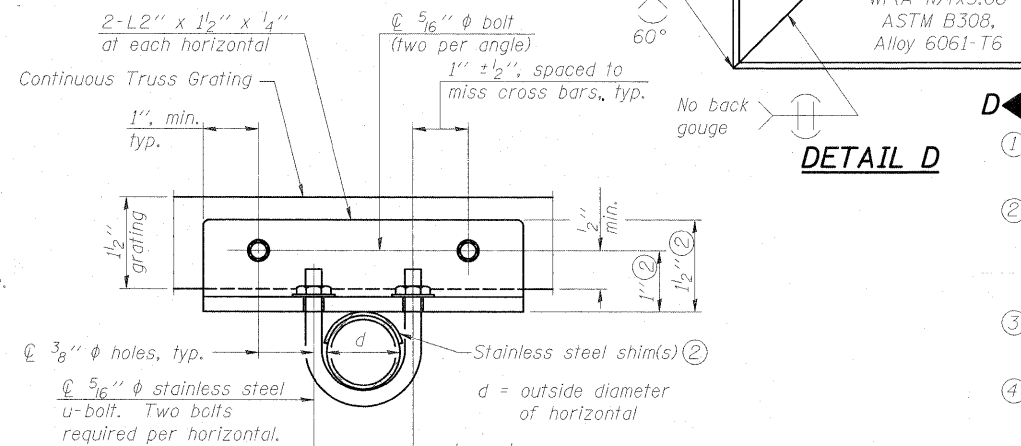
**SECTION D-D**

Screw type stainless steel tube clamp at shim location



**DETAIL T**

(Continuous Truss grating)



**SECTION T-T**

- Drilling holes in grating may be done in shop or field, based on Contractor's preference and subject to accurate alignment.
- Stainless steel shims shall be placed as shown in Detail T if needed to compensate for alignment variations between horizontal and diagonal pipes beyond adjustment provided by angles. Thicker shims may be used subject to shims performing properly.
- If Handrail Joint present, weld angle to WF(A-N)4 and 1/4" extension bars. (See Base Sheet OSC-A-8.)
- $\phi$  1/8" x 1/2" x 2" welded to handrail posts to protect locations that contact grating.
- Tube to grating gap may vary from 0 to 1/2", max. to align walkway, allow for camber, etc.
- Based on actual sign height,  $D_s$ , given on OSC-A-1.

**WALKWAY, GRATING, HANDRAIL, AND LIGHT FIGURE ARE NOT REQUIRED**

**CANTILEVER SIGN STRUCTURES  
WALKWAY DETAILS  
ALUMINUM TRUSS & STEEL  
F.A.I. RT. 55 - SEC. (99-1&2)R-6  
WILL COUNTY**

NUMBER	REVISION	DATE

Structure Number	Station	A	(6) B	C	(6) D

DESIGNED
CHECKED
DRAWN
CHECKED

SHEET NO. SD-21 SHEETS	F.A.I. RTE. 55	SECTION (99-1&2) R-6	COUNTY WILL	TOTAL SHEETS 756	SHEET NO. 325
	CONTRACT NO. 60F12			FED. ROAD DIST. NO. ILLINOIS FED. AID PROJECT	