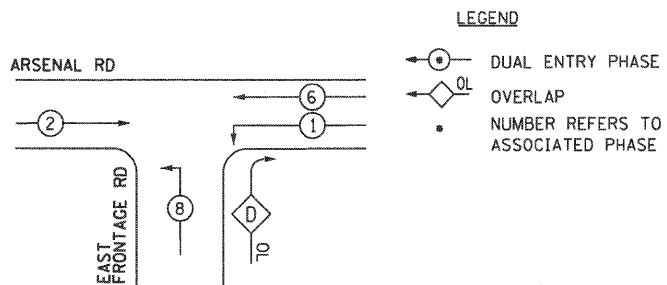


TEMPORARY CONTROLLER SEQUENCE



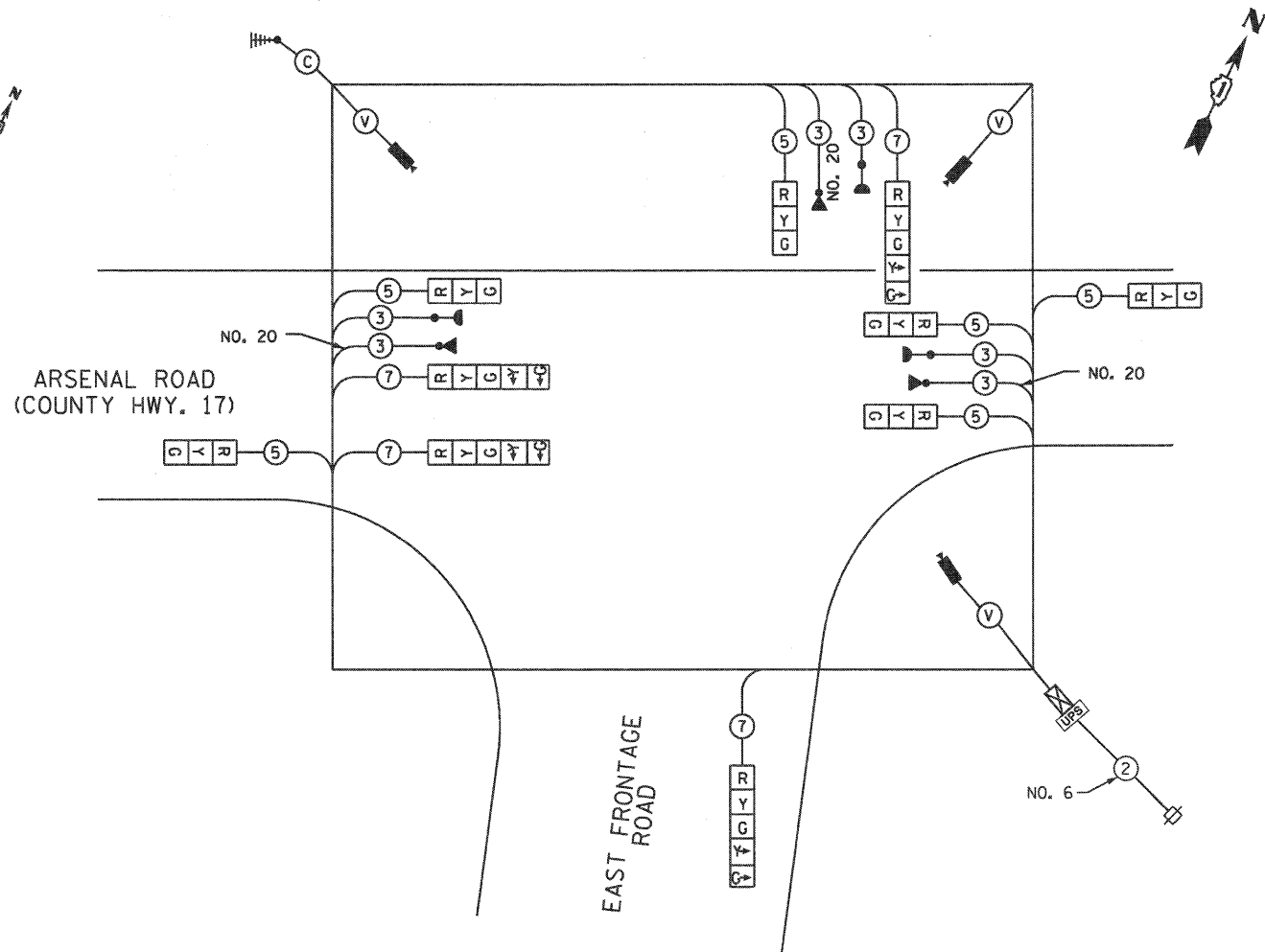
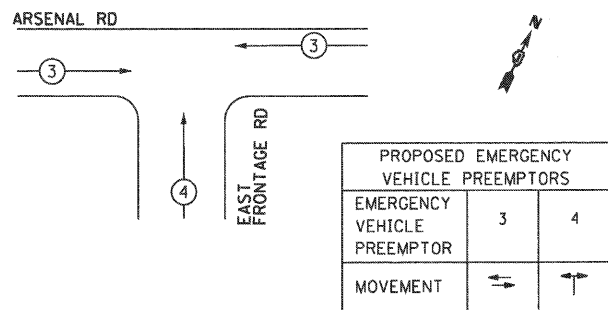
TEMPORARY PHASE DESIGNATION DIAGRAM

STAGE 3, 4, 4B, AND 4C

PHASE DESIGNATION DIAGRAM

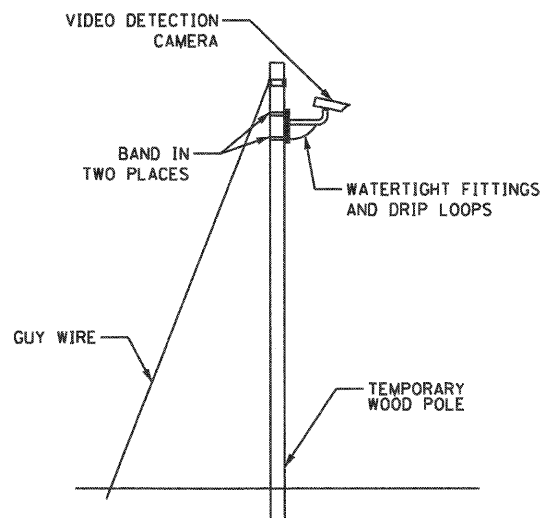
OVERLAP LETTER	PERMISSIVE PHASE	PROTECTED PHASE
D	= 8	+ 1

TEMPORARY EMERGENCY VEHICLE PREEMPTION SEQUENCE



TEMPORARY CABLE PLAN

STAGE 3, 4, 4B, AND 4C



TEMPORARY VIDEO DETECTION MOUNTING DETAIL

NOT TO SCALE

EJM ENGINEERING, INC.
411 South Wells Street Suite 800
Chicago, Illinois 60607



I.D.O.T. TRAFFIC SIGNAL INSTALLATION ELECTRICAL SERVICE REQUIREMENTS					
TYPE	NO. OF LAMPS	WATTAGE		% OPERATIONS	TOTAL WATTAGE
		INCAND.	LED		
SIGNAL (RED)	10	17		0.50	85.00
(YELLOW)	10		25	0.25	62.50
(GREEN)	10		15	0.25	37.50
ARROW	8		12	0.10	9.6
CONTROLLER	1		100	1.00	100.00
VIDEO SYSTEM		150		1.00	150.00
ENERGY COSTS TO:					TOTAL = 444.6
WILL COUNTY DEPARTMENT OF HIGHWAYS 16841 LARAWAY ROAD JOLIET, ILLINOIS 60433					
ENERGY SUPPLY CONTACT:		MS. BETTY BRULD			
PHONE:		815-724-5052			
COMPANY:		COMED			

FILE NAME = ...D160F12-SHT-TR04-11.dgn	DESIGNED - GR	REVISIONS
	DRAWN - GR	REVISIONS
	CHECKED - RY	REVISIONS
	DATE - 02/04/2011	REVISIONS

STATE OF ILLINOIS
DEPARTMENT OF TRANSPORTATION

TEMPORARY CABLE PLAN, PHASE DESIGNATION DIAGRAM
AND EMERGENCY VEHICLE PREEMPTION SEQUENCE - STAGE 3
EXISTING ARSENAL ROAD AND EAST FRONTAGE ROAD

SCALE: NONE SHEET NO. 5 OF 9 SHEETS

F.A.I. RTE.	SECTION	COUNTY	TOTAL SHEETS	SHEET NO.
55	99-2HB-2B-1	WILL	756	342
				CONTRACT NO. 60F12
FED. ROAD DIST. NO. 1 ILLINOIS FED. AID PROJECT				

FINAL