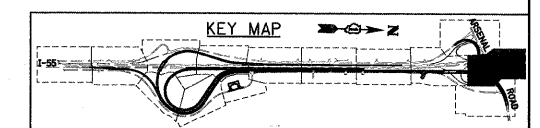
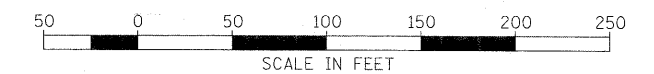
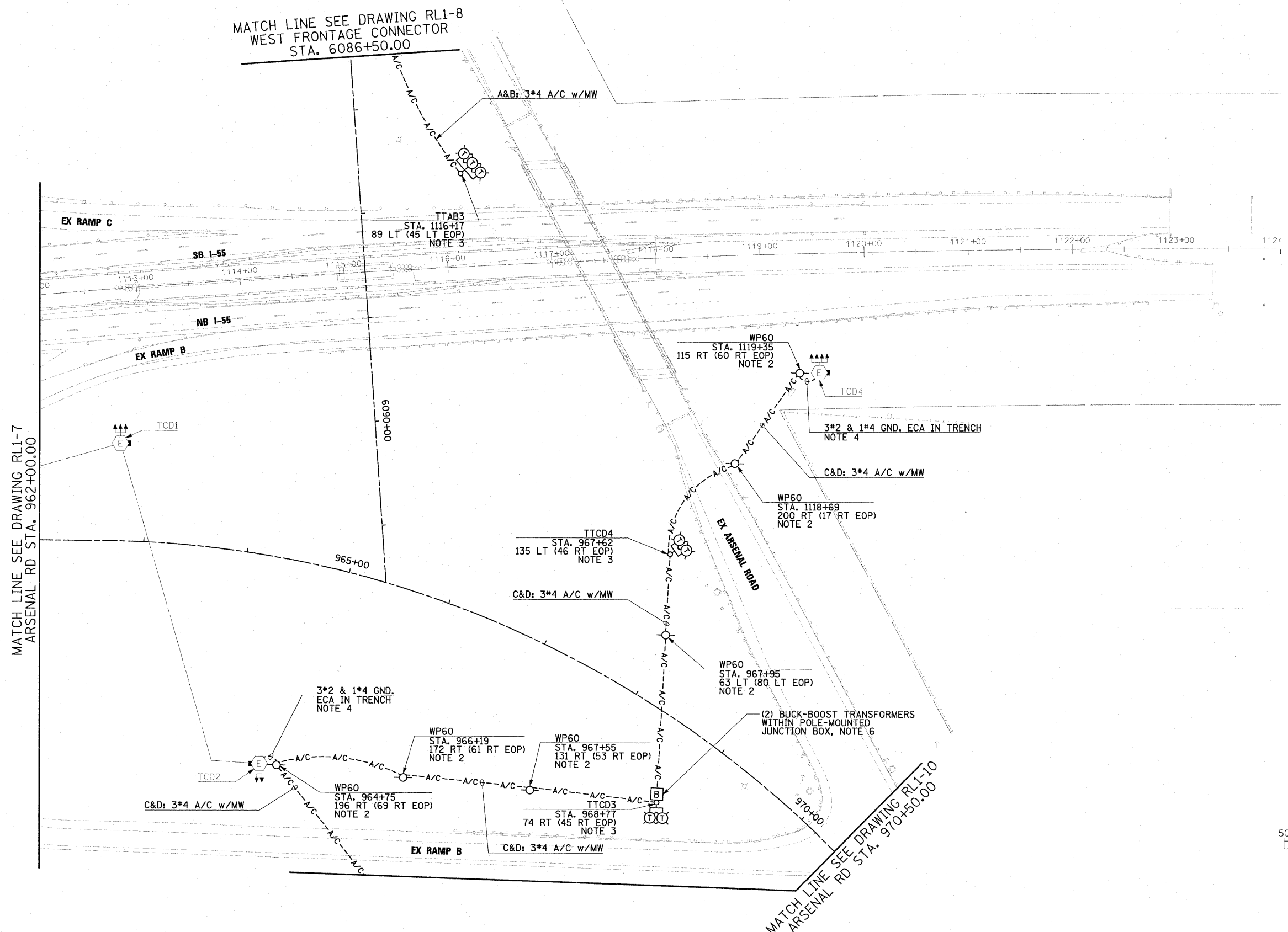


NOTES:

1. SEE DRAWING GE-1 FOR ELECTRICAL SYMBOLS AND ABBREVIATIONS. SEE DRAWING GE-2 FOR ELECTRICAL GENERAL NOTES AND SUGGESTED LIGHTING PHASING NOTES.
2. INSTALL 60 FOOT WOOD LIGHT POLES AS SHOWN. SEE DRAWING ED-6 FOR TEMPORARY LIGHT POLE INSTALLATION DETAIL. THIS WORK SHALL BE INCLUDED IN THE "LIGHT POLE, WOOD, 60 FOOT, CLASS 4 (INSTALL ONLY)" PAY ITEM. SEPARATE PAYMENT WILL NOT BE MADE.
3. FURNISH AND INSTALL TEMPORARY LIGHTING UNIT, CONSISTING OF 100 FOOT WOOD LIGHT POLE, WITH 15 FOOT MAST ARM, 750W HPS HORIZONTAL MOUNT LUMINAIRES, BULLHORN MOUNTING BRACKET, ASSOCIATED WIRING AND GROUNDING. SEE DRAWINGS ED-6 AND ED-7 FOR TEMPORARY LIGHT POLE INSTALLATION DETAIL. THIS WORK SHALL BE INCLUDED IN THE "LIGHT POLE, WOOD, 100FT, CLASS 1 WITH 15FT MAST ARM" PAY ITEM. 750W HPS HORIZONTAL MOUNT LUMINAIRE(S) WILL BE PAID FOR SEPARATELY.
4. SEE DRAWING ED-6 FOR WOOD POLE TO HIGH MAST LIGHT TOWER WIRING CONNECTION DETAIL.
5. SEE IDOT STANDARD DRAWING BE-800 FOR TEMPORARY LIGHT POLE CABLE ATTACHMENT DETAIL.
6. BUCK-BOOST TRANSFORMERS TO BE INSTALLED AT THE DISCRETION OF THE ENGINEER. AFTER TEMPORARY LIGHTING UNITS TTCD3 AND TTCD4 ARE INSTALLED AND CONNECTED TO EXISTING HIGH MAST LIGHT TOWER TCD4, THE CONTRACTOR SHALL TEST THE CIRCUITS BEFORE THE BUCK-BOOST TRANSFORMERS ARE INSTALLED IN CASE COMED HAS PROVIDED VOLTAGE SIGNIFICANTLY HIGHER THAN EXPECTED AND THE BUCK-BOOST TRANSFORMER INSTALLATION CAN BE OMITTED. SHOULD THE ENGINEER DETERMINE THAT BUCK-BOOST TRANSFORMERS ARE REQUIRED, SEE DRAWING ED-5 FOR BUCK-BOOST TRANSFORMER INSTALLATION DETAILS. LUMINAIRES ON TEMPORARY LIGHTING UNIT TTCD3 SHALL BE WIRED BEFORE THE BUCK-BOOST TRANSFORMERS IN THE RESPECTIVE CIRCUITS. TESTING OF THE CIRCUITS TO DETERMINE IF BUCK-BOOST TRANSFORMERS ARE NECESSARY SHALL BE CONSIDERED INCIDENTAL TO THE COST OF RELATED CABLE PAY ITEM. IF BUCK-BOOST TRANSFORMERS ARE REQUIRED, THE BUCK-BOOST TRANSFORMER, OVERCURRENT PROTECTION DEVICES, ENCLOSURE, WIRING, AND ALL INCIDENTALS NECESSARY FOR A COMPLETE AND FUNCTIONAL INSTALLATION SHALL BE INCLUDED IN THE "BUCK-BOOST TRANSFORMER, 1.5 KVA, 240V PRIMARY, 24V SECONDARY" PAY ITEM. SEPARATE PAYMENT WILL NOT BE MADE.



McDonough Associates Inc.
 Engineers / Architects
 130 East Randolph Street Chicago, Illinois 60601

FILE NAME = D:\60F12-SHT-RL1-9.dgn	USER NAME = TKluagel	DESIGNED - JLW	REVISED -
PLOT SCALE = 1:50	CHECKED - KMY	DRAWN - CJM	REVISED -
PLOT DATE = 3/3/2011	DATE - 2/4/11	CHECKED - KMY	REVISED -

STATE OF ILLINOIS
DEPARTMENT OF TRANSPORTATION

I-55 AT ARSENAL ROAD		F.A.I. RTE.	SECTION	COUNTY	TOTAL SHEETS	SHEET NO.
PROPOSED ROADWAY LIGHTING PLAN-STAGE 1		55	99-2HB-2B-1	WILL	756	357
SCALE: 1" = 50'		SHEET NO. 9 OF 10 SHEETS		STA.	TO STA.	

CONTRACT NO. 60F12	
FED. ROAD DIST. NO. 1 ILLINOIS FED. AID PROJECT	